

ARG53963 anti-TCR alpha + TCR beta antibody [IP26] (PE)

Package: 100 tests
Store at: 4°C

Summary

Product Description	PE-conjugated Mouse Monoclonal antibody [IP26] recognizes TCR alpha + TCR beta
Tested Reactivity	Hu
Tested Application	FACS
Specificity	The clone IP26 recognizes a monomorphic determinant of TCR alpha + TCR beta, the dominant subtype of T cell receptor expressed in human peripheral blood.
Host	Mouse
Clonality	Monoclonal
Clone	IP26
Isotype	IgG1
Target Name	TCR alpha + TCR beta
Species	Human
Conjugation	PE

Application Instructions

Application table	Application	Dilution
	FACS	20 µl / 10 ⁶ cells
Application Note	* The dilutions indicate recommended starting dilutions and the optimal dilutions or concentrations should be determined by the scientist.	

Properties

Form	Liquid
Purification Note	The purified antibody is conjugated with R-Phycoerythrin (PE) under optimum conditions. The conjugate is purified by size-exclusion chromatography and adjusted for direct use. No reconstitution is necessary.
Buffer	PBS, 15 mM Sodium azide and 0.2% (w/v) high-grade protease free BSA
Preservative	15 mM Sodium azide
Stabilizer	0.2% (w/v) high-grade protease free BSA
Storage instruction	Aliquot and store in the dark at 2-8°C. Keep protected from prolonged exposure to light. Avoid repeated freeze/thaw cycles. Suggest spin the vial prior to opening. The antibody solution should be gently mixed before use.
Note	For laboratory research only, not for drug, diagnostic or other use.

Bioinformation

Database links[GeneID: 6955 Human](#)**Background**

The antigen-specific T cell receptor (TCR) is composed of either alpha and beta subunit, or gamma and delta subunit. Majority of T cells present in the blood, lymph and secondary lymphoid organs express TCR alpha/beta heterodimers, whereas the T cells expressing TCR gamma/delta heterodimers are localized mainly in epithelial tissues and at the sites of infection. The subunits of TCR heterodimers are covalently bonded and in the endoplasmic reticulum they associate with CD3 subunits to form functional TCR-CD3 complex. Lack of expression of any of the chains is sufficient to stop cell surface expression._x000D_

Research Area

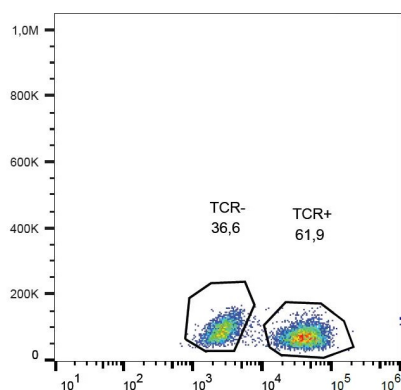
Developmental Biology antibody; Immune System antibody

Calculated Mw

TCR alpha: 30 kDa

TCR beta: 35 kDa

Images



ARG53963 anti-TCR alpha + TCR beta antibody [IP26] (PE) FACS image

Flow Cytometry: Human peripheral blood cells (Imphocyte gate) stained with ARG53963 anti-TCR alpha + TCR beta antibody [IP26] (PE).