

ARG53949 Mouse anti-Human IgG (Fab) antibody [4A11] (PE)

Package: 100 µg
Store at: 4°C

Summary

Product Description	PE-conjugated Mouse Monoclonal antibody [4A11] recognizes Human IgG Fab. This antibody detects Fab fragments regardless light chain type.
Tested Reactivity	Hu
Tested Application	FACS
Host	Mouse
Clonality	Monoclonal
Clone	4A11
Isotype	IgG2b
Target Name	IgG (Fab)
Species	Human
Immunogen	Purified human IgG.
Target Ig	Human IgG
Conjugation	PE

Application Instructions

Application table	Application	Dilution
	FACS	1 - 5 µg/ml
Application Note	* The dilutions indicate recommended starting dilutions and the optimal dilutions or concentrations should be determined by the scientist.	

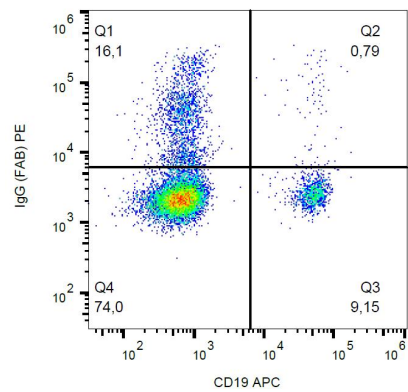
Properties

Form	Liquid
Purification Note	The purified antibody is conjugated with R-Phycoerythrin (PE) under optimum conditions. The conjugate is purified by size-exclusion chromatography and adjusted for direct use. No reconstitution is necessary.
Buffer	PBS, 15 mM Sodium azide and 0.2% (w/v) high-grade protease free BSA
Preservative	15 mM Sodium azide
Stabilizer	0.2% (w/v) high-grade protease free BSA
Concentration	0.1 mg/ml
Storage instruction	Aliquot and store in the dark at 2-8°C. Keep protected from prolonged exposure to light. Avoid repeated freeze/thaw cycles. Suggest spin the vial prior to opening. The antibody solution should be gently mixed before use.
Note	For laboratory research only, not for drug, diagnostic or other use.

Bioinformation

Gene Symbol	IGHG1
Gene Full Name	immunoglobulin heavy constant gamma 1 (G1m marker)
Research Area	Controls and Markers antibody; Gene Regulation antibody; Immune System antibody

Images



ARG53949 Mouse anti-Human IgG (Fab) antibody [4A11] (PE) FACS image

Flow Cytometry: Human peripheral blood cells stained with ARG53949 Mouse anti-Human IgG (Fab) antibody [4A11] (PE) and anti-CD19 antibody (APC).