

ARG53922 anti-CPNE7 antibody [CPNE7-01]

Package: 100 µg
Store at: -20°C

Summary

Product Description	Mouse Monoclonal antibody [CPNE7-01] recognizes CPNE7
Tested Reactivity	Hu
Tested Application	WB
Specificity	The clone CPNE7-01 recognizes C terminus of human CPNE7, a calcium-binding cytoplasmic protein expressed mainly in brain.
Host	Mouse
Clonality	Monoclonal
Clone	CPNE7-01
Isotype	IgG
Target Name	CPNE7
Species	Human
Immunogen	Bacterially produced GST-fused C terminus of human CPNE7.
Conjugation	Un-conjugated
Alternate Names	Copine-7; Copine VII

Application Instructions

Application table	Application	Dilution
	WB	Assay-dependent
Application Note	* The dilutions indicate recommended starting dilutions and the optimal dilutions or concentrations should be determined by the scientist.	

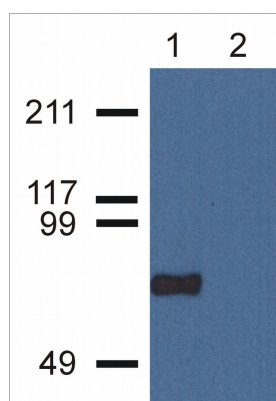
Properties

Form	Liquid
Purification	Purified from ascites by protein-A affinity chromatography.
Purity	> 95% (by SDS-PAGE)
Buffer	PBS (pH 7.4) and 15 mM Sodium azide
Preservative	15 mM Sodium azide
Concentration	1 mg/ml
Storage instruction	For continuous use, store undiluted antibody at 2-8°C for up to a week. For long-term storage, aliquot and store at -20°C or below. Storage in frost free freezers is not recommended. Avoid repeated freeze/thaw cycles. Suggest spin the vial prior to opening. The antibody solution should be gently mixed before use.

Bioinformation

Database links	GeneID: 27132 Human Swiss-port # Q9UBL6 Human
Gene Symbol	CPNE7
Gene Full Name	copine VII
Background	CPNE7 (copine VII) is a member of highly conserved copine family, which is composed of calcium-dependent membrane-binding proteins containing two N-terminal C domains and a C-terminal A domain (von Willenbrand domain). There is an evidence that copines (at least copine III) may represent a novel unconventional kinase family. CPNE7 is expressed mainly in brain, but also in duodenum, jejunum, thymus and testes.
Function	May function in membrane trafficking. Exhibits calcium-dependent phospholipid binding properties (By similarity). [UniProt]
Research Area	Metabolism antibody; Neuroscience antibody; Signaling Transduction antibody
Calculated Mw	70 kDa

Images



ARG53922 anti-CPNE7 antibody [CPNE7-01] WB image

Western blot: 1. HeLa nuclear fraction 2. HeLa cytoplasmic fraction stained with ARG53922 anti-CPNE7 antibody [CPNE7-01].