

ARG53883 anti-CD6 antibody [MEM-98] (PE)

Package: 100 tests
Store at: 4°C

Summary

| | |
|---------------------|------------------------------------------------------------------------------------------------------------------------------------------------------------------------------------------------------------|
| Product Description | PE-conjugated Mouse Monoclonal antibody [MEM-98] recognizes CD6 |
| Tested Reactivity | Hu |
| Tested Application | FACS |
| Specificity | The clone MEM-98 reacts with CD6, a 100-130 kDa single chain transmembrane glycoprotein expressed on T and B lymphocytes subsets, thymocytes, and acute lymphocytic leukemia cells. |
| Host | Mouse |
| Clonality | Monoclonal |
| Clone | MEM-98 |
| Isotype | IgG1 |
| Target Name | CD6 |
| Species | Human |
| Immunogen | Human CD6 antigen purified by immunoaffinity chromatography from HBP-ALL cells followed by preparative SDS-PAGE of non-boiled non-reduced sample (excised piece of gel corresponding to the 100 kDa zone). |
| Conjugation | PE |
| Alternate Names | CD antigen CD6; TP120; T-cell differentiation antigen CD6; T12 |

Application Instructions

| | | |
|-------------------|--------------------------------------------------------------------------------------------------------------------------------------------|-------------------------------|
| Application table | Application | Dilution |
| | FACS | 20 µl / 10 ⁶ cells |
| Application Note | * The dilutions indicate recommended starting dilutions and the optimal dilutions or concentrations should be determined by the scientist. | |

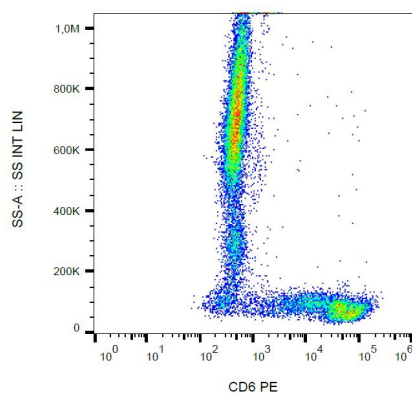
Properties

| | |
|---------------------|------------------------------------------------------------------------------------------------------------------------------------------------------------------------------------------------------------------------------|
| Form | Liquid |
| Purification Note | The purified antibody is conjugated with R-Phycoerythrin (PE) under optimum conditions. The conjugate is purified by size-exclusion chromatography and adjusted for direct use. No reconstitution is necessary. |
| Buffer | PBS, 15 mM Sodium azide and 0.2% (w/v) high-grade protease free BSA |
| Preservative | 15 mM Sodium azide |
| Stabilizer | 0.2% (w/v) high-grade protease free BSA |
| Storage instruction | Aliquot and store in the dark at 2-8°C. Keep protected from prolonged exposure to light. Avoid repeated freeze/thaw cycles. Suggest spin the vial prior to opening. The antibody solution should be gently mixed before use. |

Bioinformation

| | |
|----------------|----------------------------------------------------------------------------------------------------------------------------------------------------------------------------------------------------------------------------------------------------------------------------------------------------------------------------------------------------------------------------------------------------------------------------------------------------------------------------------------------------------------------------------------------------------------------------------------------------------------------|
| Database links | GeneID: 923 Human Swiss-port # P30203 Human |
| Gene Symbol | CD6 |
| Gene Full Name | CD6 molecule |
| Background | CD6, also known as T12, is a member of the scavenger receptor superfamily found on T and B cell subsets, thymocytes, and acute lymphocytic leukemia cells (ALL). CD6 interacts with its ligand CD166/ALCAM (activated leukocyte cell adhesion molecule) and serves as a coreceptor for T cell activation and stabilizer of the immunological synapse. CD6-ALCAM mediated cell adhesion is also important for T cell proliferation. CD6 may exert some its functions via association with CD5, probably by fine-tuning CD5 signaling. Ligation of CD6 has antiapoptotic role in chronic lymphocytic leukemia B cells. |
| Function | Involved in cell adhesion. Binds to CD166. [UniProt] |
| Research Area | Developmental Biology antibody; Immune System antibody |
| Calculated Mw | 72 kDa |
| PTM | After T-cell activation, becomes hyperphosphorylated on Ser and Thr residues and phosphorylated on Tyr residues. Glycosylated. |

Images



ARG53883 anti-CD6 antibody [MEM-98] (PE) FACS image

Flow Cytometry: Human peripheral blood cells stained with ARG53883 anti-CD6 antibody [MEM-98] (PE).