

ARG53871 anti-CD52 antibody [HI186] (PE)

Package: 100 tests
Store at: 4°C

Summary

Product Description	PE-conjugated Mouse Monoclonal antibody [HI186] recognizes CD52
Tested Reactivity	Hu
Tested Application	FACS
Specificity	The clone HI186 reacts with CD52 (CAMPATH-1), a 21-28 kDa glycoprotein containing a large N-linked carbohydrate moiety; mature CD52 molecule is actually much smaller (approx. 8-9 kDa). CD52 is expressed at high levels on lymphocytes, monocytes/macrophages and in male reproductive tract. HLDA VI; WS Code BP 523 HLDA VI; WS Code T 6T-057
Host	Mouse
Clonality	Monoclonal
Clone	HI186
Isotype	IgG2b
Target Name	CD52
Species	Human
Immunogen	Human tonsil
Conjugation	PE
Alternate Names	He5; CAMPATH-1 antigen; Human epididymis-specific protein 5; Cambridge pathology 1 antigen; CDW52; Epididymal secretory protein E5; CDW52; CD antigen CD52

Application Instructions

Application table	Application	Dilution
	FACS	20 µl / 10 ⁶ cells
Application Note	* The dilutions indicate recommended starting dilutions and the optimal dilutions or concentrations should be determined by the scientist.	

Properties

Form	Liquid
Purification Note	The purified antibody is conjugated with R-Phycoerythrin (PE) under optimum conditions. The conjugate is purified by size-exclusion chromatography and adjusted for direct use. No reconstitution is necessary.
Buffer	PBS, 15 mM Sodium azide and 0.2% (w/v) high-grade protease free BSA
Preservative	15 mM Sodium azide
Stabilizer	0.2% (w/v) high-grade protease free BSA
Storage instruction	Aliquot and store in the dark at 2-8°C. Keep protected from prolonged exposure to light. Avoid

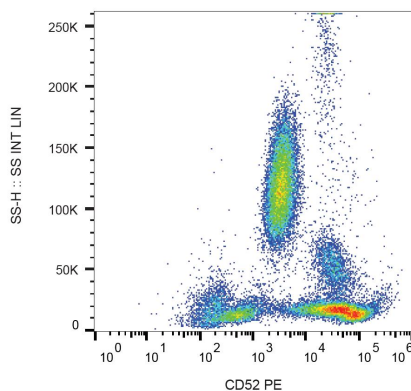
repeated freeze/thaw cycles. Suggest spin the vial prior to opening. The antibody solution should be gently mixed before use.

Note For laboratory research only, not for drug, diagnostic or other use.

Bioinformation

Database links	GeneID: 1043 Human Swiss-port # P31358 Human
Gene Symbol	CD52
Gene Full Name	CD52 molecule
Background	CD52 (CAMPATH-1, HE5) is a highly glycosylated GPI-anchored 21-28 kDa glycopeptide which is present at high levels on lymphocytes, macrophages, epithelial cells of male reproductive tract and mature sperm. Its 12-amino acid backbone carries a complex N-linked carbohydrate moiety, which differs between sperm and leukocyte CD52, as well as the GPI anchor does. CD52 can be acquired by sperm cells from seminal plasma, where it is released by epithelial cells. Although CD52 is not an essential T-cell costimulator, its triggering results in activation of normal human T cells. CD52 is a very good target for antibody/complement-mediated cell lysis.
Function	May play a role in carrying and orienting carbohydrate, as well as having a more specific role. [UniProt]
Research Area	Immune System antibody
Calculated Mw	7 kDa

Images



ARG53871 anti-CD52 antibody [HI186] (PE) FACS image

Flow Cytometry: Human peripheral blood stained with ARG53871 anti-CD52 antibody [HI186] (PE).