

ARG53869 anti-CD50 / ICAM3 antibody [MEM-171] (PE)

Package: 100 tests
Store at: 4°C

Summary

Product Description	PE-conjugated Mouse Monoclonal antibody [MEM-171] recognizes CD50 / ICAM3
Tested Reactivity	Hu
Tested Application	FACS
Specificity	The clone MEM-171 recognizes an epitope in the D2 domain of CD50 (ICAM-3), a 120-130 kDa type I membrane protein (immunoglobulin supergene family) expressed on leukocytes, endothelial cells and Langerhans cells; it is negative on platelets and erythrocytes. HLDA VI; WS Code BP 614 HLDA VI; WS Code NL N-L022
Host	Mouse
Clonality	Monoclonal
Clone	MEM-171
Isotype	IgG1
Target Name	CD50 / ICAM3
Species	Human
Immunogen	Human granulocytes
Conjugation	PE
Alternate Names	CD50; CD antigen CD50; Intercellular adhesion molecule 3; ICAM-3; ICAM-R; CDw50; CDW50

Application Instructions

Application table	Application	Dilution
	FACS	20 µl / 10 ⁶ cells
Application Note	* The dilutions indicate recommended starting dilutions and the optimal dilutions or concentrations should be determined by the scientist.	

Properties

Form	Liquid
Purification Note	The purified antibody is conjugated with R-Phycoerythrin (PE) under optimum conditions. The conjugate is purified by size-exclusion chromatography and adjusted for direct use. No reconstitution is necessary.
Buffer	PBS, 15 mM Sodium azide and 0.2% (w/v) high-grade protease free BSA
Preservative	15 mM Sodium azide
Stabilizer	0.2% (w/v) high-grade protease free BSA
Storage instruction	Aliquot and store in the dark at 2-8°C. Keep protected from prolonged exposure to light. Avoid repeated freeze/thaw cycles. Suggest spin the vial prior to opening. The antibody solution should be

gently mixed before use.

Note

For laboratory research only, not for drug, diagnostic or other use.

Bioinformation

Database links

[GeneID: 3385 Human](#)

[Swiss-port # P32942 Human](#)

Gene Symbol

ICAM3

Gene Full Name

intercellular adhesion molecule 3

Background

CD50 (intracellular adhesion molecule 3, ICAM-3) is a transmembrane glycoprotein expressed by leukocytes, that serves as a counter-receptor for the lymphocyte function-associated antigen (LFA)-1 integrin. Besides functioning as an adhesive molecule that mediates e.g. the contact between T cells and antigen presenting cells, ICAM-3 regulates affinity of LFA-1 for ICAM-1 and induces T cell activation and proliferation. ICAM-3 plays an essential role in the initiation of the immune response both on T cells and antigen presenting cells and interacts also with CD209 (dendritic cell-specific ICAM-3-grabbing nonintegrin, DC-SIGN), a C-type lectin of dendritic cells and macrophages; this process is involved in dialogue between dendritic cells and granulocytes.

Function

ICAM proteins are ligands for the leukocyte adhesion protein LFA-1 (integrin alpha-L/beta-2). ICAM3 is also a ligand for integrin alpha-D/beta-2. [UniProt]

Research Area

Immune System antibody; Signaling Transduction antibody

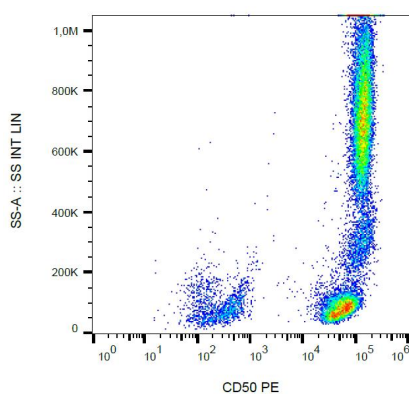
Calculated Mw

60 kDa

PTM

Upon stimulation by a physiologic stimuli becomes rapidly and transiently phosphorylated on serine residues.
N-glycosylated; glycans consist of a mixture of tri- and tetra-antennary complex-type chains and high-mannose chains.

Images



ARG53869 anti-CD50 / ICAM3 antibody [MEM-171] (PE) FACS image

Flow Cytometry: Human peripheral blood stained with ARG53869 anti-CD50 / ICAM3 antibody [MEM-171] (PE).