

## ARG53791 anti-CD21 antibody [LT21] (PE)

Package: 100 tests  
Store at: 4°C

### Summary

Product Description	PE-conjugated Mouse Monoclonal antibody [LT21] recognizes CD21
Tested Reactivity	Hu, Bov, Dog, Pig
Tested Application	FACS
Specificity	The clone LT21 reacts with CD21 (CR2), a 145 kDa transmembrane glycoprotein (complement C3d receptor - C3dR) expressed on B lymphocytes, follicular dendritic cells, some epithelial cells and a subsets of T lymphocytes. It is not expressed on immature B cells. HLDA VI; WS Code B CD21.1
Host	Mouse
Clonality	Monoclonal
Clone	LT21
Isotype	IgG1
Target Name	CD21
Species	Human
Immunogen	IM9 human B-lymphoblastoid cell line
Conjugation	PE
Alternate Names	Cr2; Complement C3d receptor; C3DR; CD21; CD antigen CD21; Complement receptor type 2; SLEB9; CR; CVID7; Epstein-Barr virus receptor; EBV receptor

### Application Instructions

Application table	Application	Dilution
	FACS	20 µl / 10 <sup>6</sup> cells
Application Note	* The dilutions indicate recommended starting dilutions and the optimal dilutions or concentrations should be determined by the scientist.	

### Properties

Form	Liquid
Purification Note	The purified antibody is conjugated with R-Phycoerythrin (PE) under optimum conditions. The conjugate is purified by size-exclusion chromatography and adjusted for direct use. No reconstitution is necessary.
Buffer	PBS, 15 mM Sodium azide and 0.2% (w/v) high-grade protease free BSA
Preservative	15 mM Sodium azide
Stabilizer	0.2% (w/v) high-grade protease free BSA
Storage instruction	Aliquot and store in the dark at 2-8°C. Keep protected from prolonged exposure to light. Avoid repeated freeze/thaw cycles. Suggest spin the vial prior to opening. The antibody solution should be

gently mixed before use.

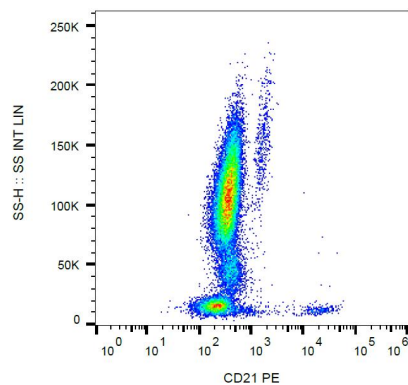
Note

For laboratory research only, not for drug, diagnostic or other use.

## Bioinformation

Database links	<a href="#">GeneID: 1380 Human</a> <a href="#">Swiss-port # P20023 Human</a>
Gene Symbol	CR2
Gene Full Name	complement component (3d/Epstein Barr virus) receptor 2
Background	CD21 (complement receptor 2, CR2) binds C3 complement fragments, especially its breakdown fragments, which remain covalently attached to complement activating surfaces or antigen. CD21 has important roles in uptake and retention of immunocomplexes, survival of memory B cells and in development and maintenance of the humoral response to T-dependent antigens. CD21 also serves as a key receptor for Epstein-Barr virus binding and is involved in targeting prions to follicular dendritic cells and expediting neuroinvasion following peripheral exposure to prions. A soluble form of the CD21 (sCD21) is shed from the lymphocyte surface and retains its ability to bind respective ligands.
Function	Receptor for complement C3Dd, for the Epstein-Barr virus on human B-cells and T-cells and for HNRPU. Participates in B lymphocytes activation. [UniProt]
Research Area	Immune System antibody
Calculated Mw	113 kDa

## Images



ARG53791 anti-CD21 antibody [LT21] (PE) FACS image

Flow Cytometry: Human peripheral blood leukocytes stained with ARG53791 anti-CD21 antibody [LT21] (PE).