

ARG53775 anti-CD162 / PSGL1 antibody [TC2] (PE)

Package: 100 tests
Store at: 4°C

Summary

Product Description	PE-conjugated Mouse Monoclonal antibody [TC2] recognizes CD162 / PSGL1
Tested Reactivity	Hu
Tested Application	FACS
Specificity	The clone TC2 reacts with CD162, a 220 kDa type I integral membrane protein expressed as disulfide-linked homodimer (sialomucin family). CD162 is present on the most peripheral blood T lymphocytes, monocytes, granulocytes; it is also expressed on a subpopulation of B lymphocytes and CD34 ⁺ bone marrow cells.
Host	Mouse
Clonality	Monoclonal
Clone	TC2
Isotype	IgG1
Target Name	CD162 / PSGL1
Species	Human
Immunogen	Human thymocytes
Conjugation	PE
Alternate Names	Selectin P ligand; PSGL1; P-selectin glycoprotein ligand 1; PSGL-1; CD162; CLA; CD antigen CD162

Application Instructions

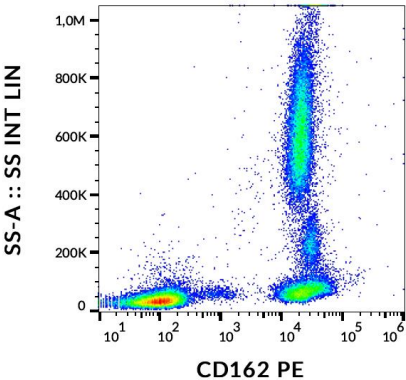
Application table	Application	Dilution
	FACS	20 µl / 10 ⁶ cells
Application Note	* The dilutions indicate recommended starting dilutions and the optimal dilutions or concentrations should be determined by the scientist.	

Properties

Form	Liquid
Purification Note	The purified antibody is conjugated with R-Phycoerythrin (PE) under optimum conditions. The conjugate is purified by size-exclusion chromatography and adjusted for direct use. No reconstitution is necessary.
Buffer	PBS, 15 mM Sodium azide and 0.2% (w/v) high-grade protease free BSA
Preservative	15 mM Sodium azide
Stabilizer	0.2% (w/v) high-grade protease free BSA
Storage instruction	Aliquot and store in the dark at 2-8°C. Keep protected from prolonged exposure to light. Avoid repeated freeze/thaw cycles. Suggest spin the vial prior to opening. The antibody solution should be gently mixed before use.

Note	For laboratory research only, not for drug, diagnostic or other use.
Bioinformation	
Database links	GeneID: 6404 Human Swiss-port # Q14242 Human
Gene Symbol	SELPLG
Gene Full Name	selectin P ligand
Background	CD162 (P-selectin glycoprotein ligand-1, PSGL-1) is a sialomucin constitutively expressed as a disulfide-linked homodimer of two 120 kDa subunits on the surface of circulating leukocytes. CD162 serves as a ligand for P- E- and L-selectin, with the highest affinity for P-selectin. It is thus involved in leukocyte rolling at the endothelial surfaces, prerequisite for firm leukocyte adhesion and subsequent transendothelial migration. CD162 also mediates leukocyte-platelet adhesion and interleukocyte contacts. Whereas serving as an adhesion molecule on mature leukocytes, CD162 is a potent negative regulator of human hematopoietic progenitors.
Function	A SLe(x)-type proteoglycan, which through high affinity, calcium-dependent interactions with E-, P- and L-selectins, mediates rapid rolling of leukocytes over vascular surfaces during the initial steps in inflammation. Critical for the initial leukocyte capture. [UniProt]
Research Area	Cell Biology and Cellular Response antibody; Immune System antibody
Calculated Mw	43 kDa
PTM	<p>Displays complex, core-2, sialylated and fucosylated O-linked oligosaccharides, at least some of which appear to contain poly-N-acetylglucosamine with varying degrees of substitution. Mainly disialylated or neutral forms of the core-2 tetrasaccharide, Galbeta1-->4GlcNAcbeta1-->6(Galbeta1-->3)GalNAcOH. The GlcN:GalN ratio is approximately 2:1 and the Man:Fuc ratio 3:5. Contains about 14% fucose with alpha-1,3 linkage present in two forms: One species is a disialylated, monofucosylated glycan, and the other, a monosialylated, trifucosylated glycan with a polylactosamine backbone. The fucosylated forms carry the Lewis antigen and are important for interaction with selectins and for functioning in leukocyte rolling. The modification containing the sialyl Lewis X glycan is on Thr-57. No sulfated O-glycans. Some N-glycosylation.</p> <p>Sulfation, in conjunction with the SLe(x)-containing glycan, is necessary for P- and L-selectin binding. High affinity P-selectin binding has a preferred requirement for the isomer sulfated on both Tyr-48 and Tyr-51, whereas L-selectin binding requires predominantly sulfation on Tyr-51 with sulfation on Tyr-48 playing only a minor role. These sulfations play an important role in L- and P-selectin-mediated neutrophil recruitment, and leukocyte rolling.</p>

Images



ARG53775 anti-CD162 / PSGL1 antibody [TC2] (PE) FACS image

Flow Cytometry: Human peripheral blood cells stained with ARG53775 anti-CD162 / PSGL1 antibody [TC2] (PE).