

ARG53430 anti-PTHr1 antibody

Package: 500 µl
Store at: -20°C

Summary

Product Description	Rabbit Polyclonal antibody recognizes PTHR1
Tested Reactivity	Hu
Tested Application	IHC-P
Host	Rabbit
Clonality	Polyclonal
Isotype	IgG
Target Name	PTHr1
Species	Human
Immunogen	Synthetic peptide corresponding to N-terminus of human parathyroid hormone receptor type 1.
Conjugation	Un-conjugated
Alternate Names	Parathyroid hormone/parathyroid hormone-related peptide receptor; PTH/PTHrP type I receptor; Parathyroid hormone 1 receptor; PTHR1; PTH/PTHr receptor; PFE; PTHR; PTH1 receptor

Application Instructions

Application table	Application	Dilution
	IHC-P	1:50
Application Note	<p>IHC-P: Antigen Retrieval: Boil tissue section in 10mM citrate buffer, pH 6.0 for 10 min followed by cooling at RT for 20 min.</p> <p>Incubation Time: 10 min at RT.</p> <p>* The dilutions indicate recommended starting dilutions and the optimal dilutions or concentrations should be determined by the scientist.</p>	
Positive Control	Parathyroid Gland	

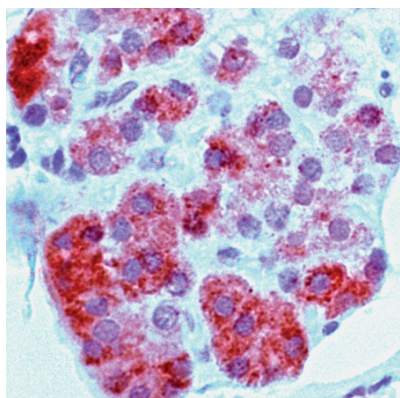
Properties

Form	Liquid
Purification	Immunogen affinity purified
Buffer	PBS (pH 7.6), 1% BSA and < 0.1% Sodium azide
Preservative	< 0.1% Sodium azide
Stabilizer	1% BSA
Storage instruction	For continuous use, store undiluted antibody at 2-8°C for up to a week. For long-term storage, aliquot and store at -20°C or below. Storage in frost free freezers is not recommended. Avoid repeated freeze/thaw cycles. Suggest spin the vial prior to opening. The antibody solution should be gently mixed before use.
Note	For laboratory research only, not for drug, diagnostic or other use.

Bioinformation

Database links	GeneID: 5745 Human Swiss-port # Q03431 Human
Gene Symbol	PTH1R
Gene Full Name	parathyroid hormone 1 receptor
Background	The protein encoded by this gene is a member of the G-protein coupled receptor family 2. This protein is a receptor for parathyroid hormone (PTH) and for parathyroid hormone-like hormone (PTHrP). The activity of this receptor is mediated by G proteins which activate adenylyl cyclase and also a phosphatidylinositol-calcium second messenger system. Defects in this receptor are known to be the cause of Jansen's metaphyseal chondrodysplasia (JMC), chondrodysplasia Blomstrand type (BOCD), as well as enchondromatosis. Two transcript variants encoding the same protein have been found for this gene. [provided by RefSeq, May 2010]
Function	This is a receptor for parathyroid hormone and for parathyroid hormone-related peptide. The activity of this receptor is mediated by G proteins which activate adenylyl cyclase and also a phosphatidylinositol-calcium second messenger system. [UniProt]
Research Area	Neuroscience antibody; Signaling Transduction antibody
Calculated Mw	66 kDa
Cellular Localization	Membrane

Images



ARG53430 anti-PTH1R antibody IHC-P image

Immunohistochemistry: Human Parathyroid stained with ARG53430 anti-PTH1R antibody.