

ARG53136 anti-HLA DP alpha 1 antibody [SP228]

Package: 100 µl
Store at: -20°C

Summary

Product Description	Rabbit Monoclonal antibody [SP228] recognizes HLA DP alpha 1
Tested Reactivity	Hu
Tested Application	FACS, IHC-P
Host	Rabbit
Clonality	Monoclonal
Clone	SP228
Isotype	IgG
Target Name	HLA DP alpha 1
Species	Human
Immunogen	Synthetic peptide derived from human HLA-DP alpha1 protein.
Conjugation	Un-conjugated
Alternate Names	DP(W3); HLASB; HLADP; HLA class II histocompatibility antigen, DP alpha 1 chain; HLA-DP1A; MHC class II DP3-alpha; W4; W3; PLT1; DP(W4); HLA-SB alpha chain; DP; MHC class II DPA1

Application Instructions

Application table	Application	Dilution
	FACS	Assay-Dependent
	IHC-P	1:100
Application Note	* The dilutions indicate recommended starting dilutions and the optimal dilutions or concentrations should be determined by the scientist.	
Positive Control	Tonsil	

Properties

Form	Liquid
Purification	Purified by protein A/G
Buffer	PBS (pH 7.6), 1% BSA and < 0.1% Sodium azide
Preservative	< 0.1% Sodium azide
Stabilizer	1% BSA
Storage instruction	For continuous use, store undiluted antibody at 2-8°C for up to a week. For long-term storage, aliquot and store at -20°C or below. Storage in frost free freezers is not recommended. Avoid repeated freeze/thaw cycles. Suggest spin the vial prior to opening. The antibody solution should be gently mixed before use.

Note For laboratory research only, not for drug, diagnostic or other use.

Bioinformation

Database links [GeneID: 3113 Human](#)

[Swiss-port # P20036 Human](#)

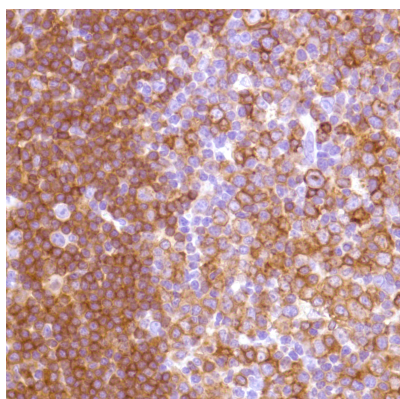
Background HLA-DP is an antigen receptor and one of the MHC class II proteins. HLA-DP is a heterodimer of an alpha and a beta chain. Both chains are type I transmembrane proteins with short cytoplasmic domains. It is expressed on antigen-presenting cells and a variety of other cell types, and is also expressed by various tumors such as melanoma, gastric carcinoma, breast carcinoma, ovarian carcinoma, and lymphoma.

Research Area Immune System antibody

Calculated Mw 29 kDa

Cellular Localization Membrane

Images



ARG53136 anti-HLA DP alpha 1 antibody [SP228] IHC-P image

Immunohistochemistry: Human Tonsil stained with ARG53136 anti-HLA DP alpha 1 antibody [SP228].