

ARG53010 anti-EMR1 F4/80 antibody [SP115]

Package: 100 µl, 50 µl
Store at: -20°C

Summary

Product Description	Rabbit Monoclonal antibody [SP115] recognizes EMR1 F4/80
Tested Reactivity	Hu, Ms
Predict Reactivity	Rat
Tested Application	IHC-Fr, IHC-P, WB
Host	Rabbit
Clonality	Monoclonal
Clone	SP115
Isotype	IgG
Target Name	EMR1 F4/80
Antigen Species	Mouse
Immunogen	Synthetic peptide around the N-terminus of Mouse EMR1 F4/80.
Conjugation	Un-conjugated
Alternate Names	EGF-like module-containing mucin-like hormone receptor-like 1; EMR1 hormone receptor; EMR1; Adhesion G protein-coupled receptor E1; EGF-like module receptor 1; TM7LN3

Application Instructions

Application table	Application	Dilution
	IHC-Fr	1:100 - 1:200
	IHC-P	1:100
	WB	1:500 - 1:2000
Application Note	IHC-P: Antigen Retrieval: Boil tissue section in EDTA buffer, pH 8.0 for 10 min followed by cooling at room temperature for 20 min. Incubation Time: 10 min at RT. * The dilutions indicate recommended starting dilutions and the optimal dilutions or concentrations should be determined by the scientist.	
Positive Control	Human Lung, Fresh Cut Mouse Liver	
Calculated Mw	160 kDa	

Properties

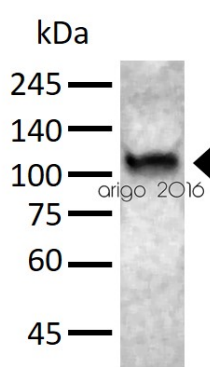
Form	Liquid
Purification	Purified by protein A/G
Buffer	PBS (pH 7.6), 1% BSA and < 0.1% Sodium azide

Preservative	< 0.1% Sodium azide
Stabilizer	1% BSA
Storage instruction	For continuous use, store undiluted antibody at 2-8°C for up to a week. For long-term storage, aliquot and store at -20°C or below. Storage in frost free freezers is not recommended. Avoid repeated freeze/thaw cycles. Suggest spin the vial prior to opening. The antibody solution should be gently mixed before use.
Note	For laboratory research only, not for drug, diagnostic or other use.

Bioinformation

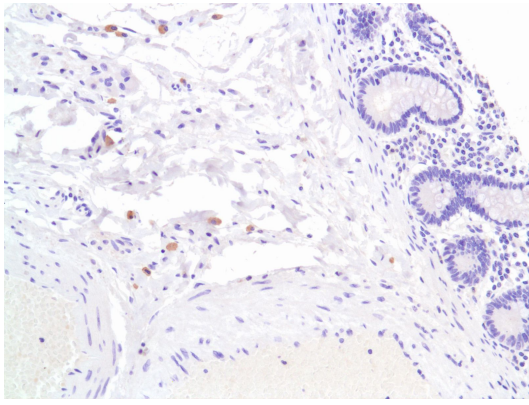
Database links	GeneID: 13733 Mouse GeneID: 2015 Human Swiss-port # Q14246 Human Swiss-port # Q61549 Mouse
Background	<p>Mouse EGF-like module-containing mucin-like hormone receptor-like 1 (EMR1) or cell surface glycoprotein F4/80 is a cell surface glycoprotein and a member of the EGF TM7 family of proteins. It shares 68% overall amino acid identity with human EGF-module-containing-mucin-like hormone receptor 1 (EMR1). Expression of F4/80 is heterogeneous and is reported to vary during macrophage maturation and activation. The F4/80 antigen is expressed on a wide range of mature tissue macrophages including Kupffer cells, Langerhans, microglia, macrophages located in the gut lamina propria, peritoneal cavity, lung, thymus, bone marrow stroma and macrophages in the red pulp of the spleen. F4/80 expression has also been reported on a subpopulation of dendritic cells but is absent from macrophages located in T cell areas of the spleen and lymph node. The ligands and biological functions of the F4/80 antigen have not yet been determined but recent studies suggest a role for F4/80 in the generation of efferent CD8+ regulatory T cells.</p>
Resrarch Area	Controls and Markers antibody; Immune System antibody
Cellular Localization	Membrane

Images



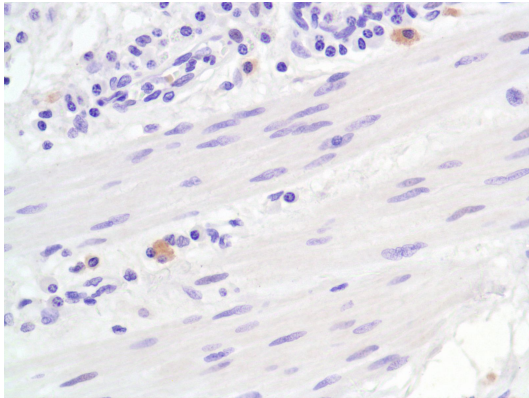
ARG53010 anti-EMR1 F4/80 antibody [SP115] WB image

Western blot: 30 µg of Mouse lung lysate stained with ARG53010 anti-EMR1 F4/80 antibody [SP115] at 1:1000 dilution.



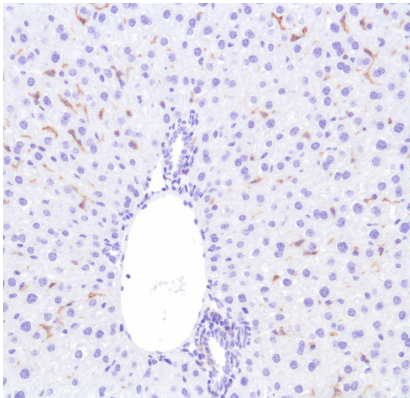
ARG53010 anti-EMR1 F4/80 antibody [SP115] IHC-P image

Immunohistochemistry: Human colon stained with ARG53010 anti-EMR1 F4/80 antibody [SP115].



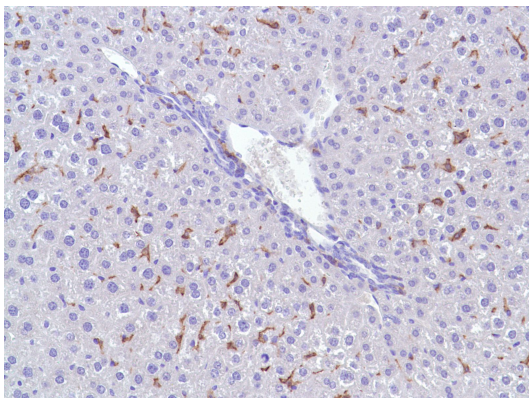
ARG53010 anti-EMR1 F4/80 antibody [SP115] IHC-P image

Immunohistochemistry: Human Esophagus stained with ARG53010 anti-EMR1 F4/80 antibody [SP115].



ARG53010 anti-EMR1 F4/80 antibody [SP115] IHC-P image

Immunohistochemistry: Mouse Liver stained with ARG53010 anti-EMR1 F4/80 antibody [SP115].



ARG53010 anti-EMR1 F4/80 antibody [SP115] IHC-P image

Immunohistochemistry: Mouse Liver stained with ARG53010 anti-EMR1 F4/80 antibody [SP115].