

ARG52865 anti-Chromogranin A antibody

Package: 500 µl
Store at: -20°C

Summary

Product Description	Rabbit Polyclonal antibody recognizes Chromogranin A
Tested Reactivity	Hu
Tested Application	ICC/IF, IHC-P
Host	Rabbit
Clonality	Polyclonal
Isotype	IgG
Target Name	Chromogranin A
Species	Human
Immunogen	Recombinant protein encoding human chromogranin A.
Conjugation	Un-conjugated
Alternate Names	Vasostatin II; CGA; Vasostatin I; Pituitary secretory protein I; SP-I; CgA; SL21; Chromogranin-A

Application Instructions

Application table	Application	Dilution
	ICC/IF	1:500
	IHC-P	1:500
Application Note	<p>IHC-P: Antigen Retrieval: Boil tissue section in 10mM citrate buffer, pH 6.0 for 10 min followed by cooling at RT for 20 min.</p> <p>Incubation Time: 10 min at RT.</p> <p>* The dilutions indicate recommended starting dilutions and the optimal dilutions or concentrations should be determined by the scientist.</p>	
Positive Control	Pancreas	

Properties

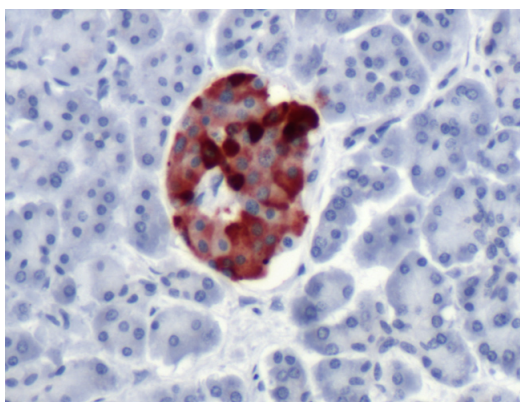
Form	Liquid
Purification	Immunogen affinity purified
Buffer	PBS (pH 7.6), 1% BSA and < 0.1% Sodium azide
Preservative	< 0.1% Sodium azide
Stabilizer	1% BSA
Storage instruction	For continuous use, store undiluted antibody at 2-8°C for up to a week. For long-term storage, aliquot and store at -20°C or below. Storage in frost free freezers is not recommended. Avoid repeated freeze/thaw cycles. Suggest spin the vial prior to opening. The antibody solution should be gently mixed before use.

Note For laboratory research only, not for drug, diagnostic or other use.

Bioinformation

Database links	GeneID: 1113 Human Swiss-port # P10645 Human
Background	Chromogranin A (a protein of 439 amino acid which is encoded on chromosome 14) is present in neuroendocrine cells throughout the body, including the neuroendocrine cells of the large and small intestine, adrenal medulla and pancreatic islets. It is expressed in carcinoid tumors, pheochromocytomas, paragangliomas, and other neuroendocrine tumors. Coexpression of chromogranin A and neuron specific enolase (NSE) is common in neuroendocrine neoplasms.
Research Area	Cancer antibody; Controls and Markers antibody; Neuroscience antibody; Signaling Transduction antibody
Calculated Mw	51 kDa
PTM	Sulfated on tyrosine residues and/or contains sulfated glycans. O-glycosylated with core 1 or possibly core 8 glycans. Proteolytic processing gives rise to an additional longer form of catestatin (residues 358-390) which displays a less potent catecholamine release-inhibitory activity (PubMed:10781584). Plasmin-mediated proteolytic processing can give rise to additional shorter and longer forms of catestatin peptides (PubMed:17991725).
Cellular Localization	Cytoplasm

Images



ARG52865 anti-Chromogranin A antibody IHC-P image

Immunohistochemistry: Human Pancreas stained with ARG52865 anti-Chromogranin A antibody