

## ARG52855 anti-ERBB3 / HER3 antibody

Package: 500 µl  
Store at: -20°C

### Summary

Product Description	Rabbit Polyclonal antibody recognizes ERBB3 / HER3
Tested Reactivity	Hu
Tested Application	IHC-P
Host	Rabbit
Clonality	Polyclonal
Isotype	IgG
Target Name	ERBB3 / HER3
Species	Human
Immunogen	Synthetic peptide derived from internal region of human c-erbB-3 protein.
Conjugation	Un-conjugated
Alternate Names	MDA-BF-1; LCCS2; p180-ErbB3; Proto-oncogene-like protein c-ErbB-3; c-erbB3; p85-sErbB3; Tyrosine kinase-type cell surface receptor HER3; p45-sErbB3; erbB3-S; HER3; c-erbB-3; ErbB-3; EC 2.7.10.1; Receptor tyrosine-protein kinase erbB-3

### Application Instructions

Application table	<table> <tr> <th>Application</th><th>Dilution</th></tr> <tr> <td>IHC-P</td><td>1:100</td></tr> </table>	Application	Dilution	IHC-P	1:100
Application	Dilution				
IHC-P	1:100				
Application Note	<p>IHC-P: Antigen Retrieval: Boil tissue section in 10mM citrate buffer, pH 6.0 for 10 min followed by cooling at RT for 20 min.</p> <p>Incubation Time: 30 min at RT.</p> <p>* The dilutions indicate recommended starting dilutions and the optimal dilutions or concentrations should be determined by the scientist.</p>				
Positive Control	Breast Carcinoma, Colon Carcinoma				

### Properties

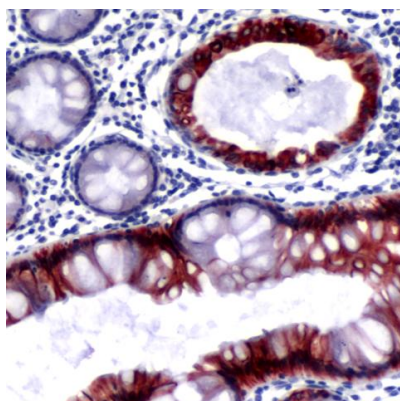
Form	Liquid
Purification	Immunogen affinity purified
Buffer	PBS (pH 7.6), 1% BSA and < 0.1% Sodium azide
Preservative	< 0.1% Sodium azide
Stabilizer	1% BSA
Storage instruction	For continuous use, store undiluted antibody at 2-8°C for up to a week. For long-term storage, aliquot and store at -20°C or below. Storage in frost free freezers is not recommended. Avoid repeated freeze/thaw cycles. Suggest spin the vial prior to opening. The antibody solution should be gently mixed before use.

Note For laboratory research only, not for drug, diagnostic or other use.

## Bioinformation

Database links	<a href="#">GeneID: 2065 Human</a> <a href="#">Swiss-port # P21860 Human</a>
Background	The gene for c-erbB-3/HER-3 is located on the long arm of human chromosome 12 (12q13) and is transcribed into a 6.2kb mRNA which is translated into a 160/180kDa glycoprotein. The c-erbB-3/HER-3 gene encodes secreted as well as transmembrane receptor tyrosine kinase due to alternative splicing. The c-erbB-3 is overexpressed in a variety of tumors including breast, stomach, pancreas, and colon.
Research Area	Cancer antibody; Controls and Markers antibody; Signaling Transduction antibody
Calculated Mw	148 kDa
PTM	Autophosphorylated (PubMed:20351256). Ligand-binding increases phosphorylation on tyrosine residues and promotes its association with the p85 subunit of phosphatidylinositol 3-kinase (PubMed:20682778).
Cellular Localization	Membrane

## Images



ARG52855 anti-ERBB3 / HER3 antibody IHC-P image

Immunohistochemistry: Human Colon Carcinoma stained with ARG52855 anti-ERBB3 / HER3 antibody.