

ARG52435 anti-synaptophysin 2 antibody

Package: 50 µl
Store at: -20°C

Summary

Product Description	Rabbit Polyclonal antibody recognizes synaptophysin 2
Tested Reactivity	Rat
Predict Reactivity	Ms
Tested Application	WB
Host	Rabbit
Clonality	Polyclonal
Isotype	IgG
Target Name	synaptophysin 2
Species	Rat
Immunogen	Synthetic peptide corresponding to amino acid residues from the C-terminal region conjugated to KLH
Conjugation	Un-conjugated
Alternate Names	Synaptoporin; SPO

Application Instructions

Application table	Application	Dilution
	WB	1:1000
Application Note	Specific for ~38k Synaptophysin 2 protein. * The dilutions indicate recommended starting dilutions and the optimal dilutions or concentrations should be determined by the scientist.	

Properties

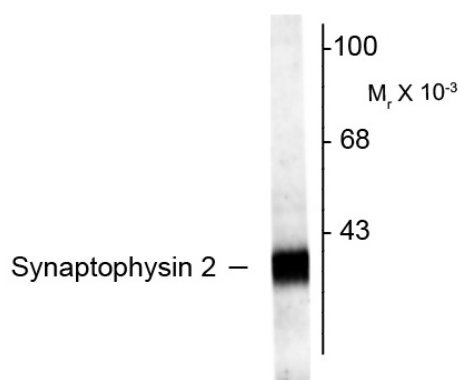
Form	Liquid
Purification	Affinity Purified
Buffer	10 mM HEPES (pH 7.5), 150 mM NaCl, 0.1 mg/ml BSA and 50% Glycerol
Stabilizer	0.1 mg/ml BSA, 50% Glycerol
Storage instruction	For continuous use, store undiluted antibody at 2-8°C for up to a week. For long-term storage, aliquot and store at -20°C. Storage in frost free freezers is not recommended. Avoid repeated freeze/thaw cycles. Suggest spin the vial prior to opening. The antibody solution should be gently mixed before use.
Note	For laboratory research only, not for drug, diagnostic or other use.

Bioinformation

Database links	GeneID: 66030 Rat
----------------	-----------------------------------

Gene Symbol	SYNPR
Gene Full Name	synaptoporin
Background	Synaptophysin 2, also known as Synaptoporin, is a component of the synaptic vesicle membrane and thought to play an important role in synaptic vesicle trafficking (Dai et al., 2003). It is highly homologous to Synaptophysin 1, yet differs in expression. Whereas Synaptophysin 1 is ubiquitously expressed, Synaptophysin 2 is concentrated in the mossy fiber synapses of the hippocampus (Grabs et al., 1994; Singec et al., 2002).
Research Area	Neuroscience antibody
Calculated Mw	29 kDa

Images



ARG52435 anti-synaptophysin 2 antibody WB image

Western Blot: rat hippocampal lysate showing specific labeling of the ~38k Synaptophysin2 protein stained with synaptophysin 2 antibody (ARG52435).