

ARG52219 anti-alpha II Spectrin antibody

Package: 50 µl
Store at: -20°C

Summary

Product Description	Rabbit Polyclonal antibody recognizes alpha II Spectrin
Tested Reactivity	Hu, Ms, Rat
Tested Application	ICC/IF, WB
Host	Rabbit
Clonality	Polyclonal
Isotype	IgG
Target Name	alpha II Spectrin
Species	Human
Immunogen	Recombinant contstruct containing the 7th, 8th, 9th repeats of human alpha II spectrin
Conjugation	Un-conjugated
Alternate Names	Spectrin alpha chain, non-erythrocytic 1; SPTA2; Fodrin alpha chain; EIEE5; NEAS; Alpha-II spectrin; Spectrin, non-erythroid alpha subunit

Application Instructions

Application table	Application	Dilution
	ICC/IF	1:500 - 1:1000
	WB	1:5000 - 1:10000
Application Note	Specific for the ~240 k alpha II spectrin protein. * The dilutions indicate recommended starting dilutions and the optimal dilutions or concentrations should be determined by the scientist.	

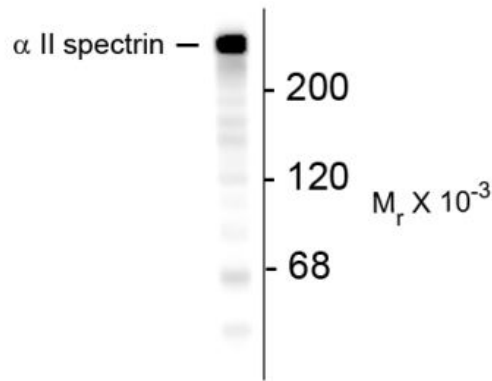
Properties

Form	Liquid
Purification	Neat serum
Buffer	Neat serum
Storage instruction	For continuous use, store undiluted antibody at 2-8°C for up to a week. For long-term storage, aliquot and store at -20°C or below. Storage in frost free freezers is not recommended. Avoid repeated freeze/thaw cycles. Suggest spin the vial prior to opening. The antibody solution should be gently mixed before use.
Note	For laboratory research only, not for drug, diagnostic or other use.

Bioinformation

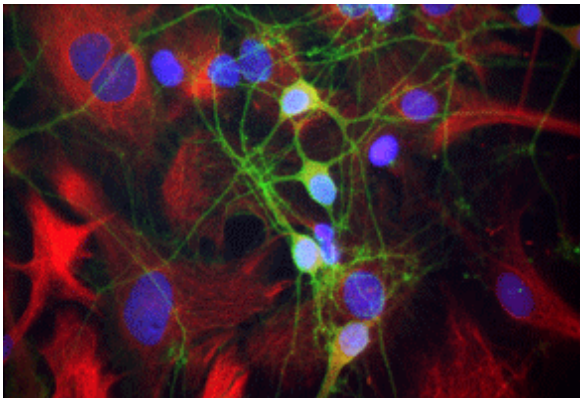
Gene Symbol	SPTAN1
Gene Full Name	spectrin, alpha, non-erythrocytic 1
Background	The spectrin family of cytoskeletal proteins is comprised of 2 alpha genes ($\alpha 1$ and $\alpha 2$) and five beta genes ($\beta 1$ - $\beta 5$). Spectrins have been shown to function as scaffolding proteins in mechanical support of the plasma membrane as well as bind other membrane proteins and lipids (Bennett and Baines 2001). Defects in spectrin genes have been linked to some forms of hereditary spherocytosis, a type of auto-hemolytic anemia which is characterized by spherical red blood cells that are more prone to lysis (Eber and Lux 2004).
Research Area	Controls and Markers antibody; Signaling Transduction antibody
Calculated Mw	285 kDa
PTM	Phosphorylation of Tyr-1176 decreases sensitivity to cleavage by calpain in vitro.

Images



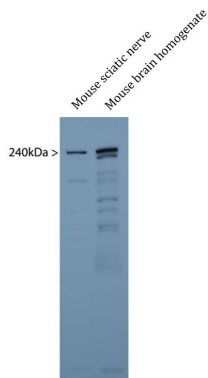
ARG52219 anti-alpha II Spectrin antibody WB image

Western blot: Mouse brain lysate stained with ARG52219 anti-alpha II Spectrin antibody showing specific immunolabeling of the ~240k alpha II spectrin protein.



ARG52219 anti-alpha II Spectrin antibody ICC/IF image

Immunofluorescence: cultured Rat neurons and glia showing axonal and dendritic staining of ARG52219 anti-alpha II Spectrin antibody (green) revealing the submembraneous cytoskeleton and nestin by ARG52345 anti-Nestin antibody [4D11] (red).



ARG52219 anti-alpha II Spectrin antibody WB image

Western blot: Mouse sciatic nerve and Mouse brain homogenate lysates stained with ARG52219 anti-alpha II Spectrin antibody.

A prominent band running at 240 kDa represents the intact alpha II Spectrin heavy chain. More minor bands below this likely represent in vivo proteolytic fragments of alpha II Spectrin.