

## ARG51840 anti-MEK5 phospho (Ser311 / Thr315) antibody

Package: 100 µl, 50 µl  
Store at: -20°C

### Summary

Product Description	Rabbit Polyclonal antibody recognizes MEK5 phospho (Ser311 / Thr315)
Tested Reactivity	Hu, Ms, Rat
Tested Application	WB
Host	Rabbit
Clonality	Polyclonal
Isotype	IgG
Target Name	MEK5
Species	Rat
Immunogen	Peptide sequence around phosphorylation site of Serine 311 and threonine 315 (V-N-S(p)I-A-K-T(p)-Y-V) derived from Rat MEK5.
Conjugation	Un-conjugated
Alternate Names	MEK 5; HsT17454; MAPK/ERK kinase 5; PRKMK5; EC 2.7.12.2; MAPKK 5; MEK5; MAPKK5; Dual specificity mitogen-activated protein kinase kinase 5; MAP kinase kinase 5

### Application Instructions

Application table	Application	Dilution
	WB	1:500 - 1:1000
Application Note	* The dilutions indicate recommended starting dilutions and the optimal dilutions or concentrations should be determined by the scientist.	

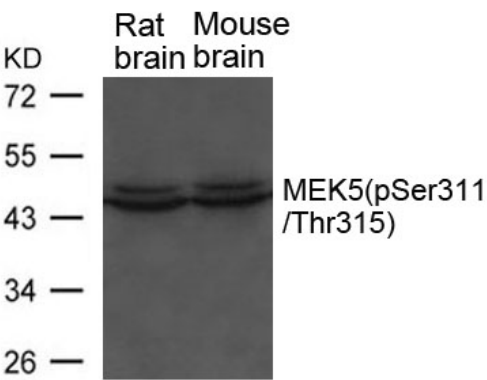
### Properties

Form	Liquid
Purification	Antibodies were produced by immunizing rabbits with KLH-conjugated synthetic phosphopeptide. Antibodies were purified by affinity-chromatography using epitope-specific phosphopeptide. In addition, non-phospho specific antibodies were removed by chromatography using non-phosphopeptide.
Buffer	PBS (without Mg <sup>2+</sup> and Ca <sup>2+</sup> , pH 7.4), 150mM NaCl, 0.02% Sodium azide and 50% Glycerol.
Preservative	0.02% Sodium azide
Stabilizer	50% Glycerol
Concentration	1 mg/ml
Storage instruction	For continuous use, store undiluted antibody at 2-8°C for up to a week. For long-term storage, aliquot and store at -20°C. Storage in frost free freezers is not recommended. Avoid repeated freeze/thaw cycles. Suggest spin the vial prior to opening. The antibody solution should be gently mixed before use.
Note	For laboratory research only, not for drug, diagnostic or other use.

Bioinformation

Gene Symbol	Map2k5
Gene Full Name	mitogen activated protein kinase kinase 5
Background	Acts as a scaffold for the formation of a ternary MAP3K2/MAP3K3-MAP3K5-MAPK7 signaling complex. Activation of this pathway appear to play a critical role in protecting cells from stress-induced apoptosis, neuronal survival and cardiac development and angiogenesis.
Function	Acts as a scaffold for the formation of a ternary MAP3K2/MAP3K3-MAP3K5-MAPK7 signaling complex. Activation of this pathway appears to play a critical role in protecting cells from stress-induced apoptosis, neuronal survival and cardiac development and angiogenesis (By similarity). [UniProt]
Research Area	Cancer antibody; Cell Biology and Cellular Response antibody; Signaling Transduction antibody
Calculated Mw	50 kDa
PTM	Activated by phosphorylation on Ser/Thr by MAP kinase kinase kinases. Yersinia yopJ may acetylate Ser/Thr residues, preventing phosphorylation and activation, thus blocking the MAPK signaling pathway.

Images



ARG51840 anti-MEK5 phospho (Ser311 / Thr315) antibody WB image

Western blot: Extracts from Rat and Mouse brain tissue stained with ARG51840 anti-MEK5 phospho (Ser311 / Thr315) antibody.