

ARG51676 anti-14-3-3 zeta phospho (Ser58) antibody

Package: 100 µl, 50 µl
Store at: -20°C

Summary

Product Description	Rabbit Polyclonal antibody recognizes 14-3-3 zeta phospho (Ser58)
Tested Reactivity	Hu, Ms, Rat
Tested Application	ICC/IF, IHC-P, WB
Host	Rabbit
Clonality	Polyclonal
Isotype	IgG
Target Name	14-3-3 zeta
Species	Human
Immunogen	Peptide sequence around phosphorylation site of serine 58 (R-S-S(p)-W-R) derived from Human 14-3-3 zeta.
Conjugation	Un-conjugated
Alternate Names	HEL4; 14-3-3-zeta; Protein kinase C inhibitor protein 1; YWHAD; KCIP-1; HEL-S-3; 14-3-3 protein zeta/delta

Application Instructions

Application table	Application	Dilution
	ICC/IF	1:100 - 1:200
	IHC-P	1:50 - 1:100
	WB	1:500 - 1:1000
Application Note	* The dilutions indicate recommended starting dilutions and the optimal dilutions or concentrations should be determined by the scientist.	

Properties

Form	Liquid
Purification	Antibodies were produced by immunizing rabbits with KLH-conjugated synthetic phosphopeptide. Antibodies were purified by affinity-chromatography using epitope-specific phosphopeptide. In addition, non-phospho specific antibodies were removed by chromatography using non-phosphopeptide.
Buffer	PBS (without Mg ²⁺ and Ca ²⁺ , pH 7.4), 150mM NaCl, 0.02% Sodium azide and 50% Glycerol.
Preservative	0.02% Sodium azide
Stabilizer	50% Glycerol
Concentration	1 mg/ml
Storage instruction	For continuous use, store undiluted antibody at 2-8°C for up to a week. For long-term storage, aliquot

and store at -20°C. Storage in frost free freezers is not recommended. Avoid repeated freeze/thaw cycles. Suggest spin the vial prior to opening. The antibody solution should be gently mixed before use.

Note

For laboratory research only, not for drug, diagnostic or other use.

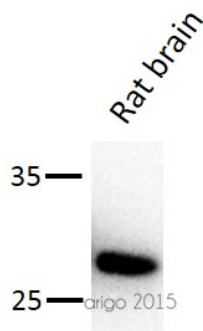
Bioinformation

Gene Symbol	YWHAZ
Gene Full Name	tyrosine 3-monooxygenase/tryptophan 5-monooxygenase activation protein, zeta
Background	This gene product belongs to the 14-3-3 family of proteins which mediate signal transduction by binding to phosphoserine-containing proteins. This highly conserved protein family is found in both plants and mammals, and this protein is 99% identical to the mouse, rat and sheep orthologs. The encoded protein interacts with IRS1 protein, suggesting a role in regulating insulin sensitivity. Several transcript variants that differ in the 5' UTR but that encode the same protein have been identified for this gene.
Function	Adapter protein implicated in the regulation of a large spectrum of both general and specialized signaling pathways. Binds to a large number of partners, usually by recognition of a phosphoserine or phosphothreonine motif. Binding generally results in the modulation of the activity of the binding partner. [UniProt]
Research Area	Cell Biology and Cellular Response antibody; Cell Death antibody; Controls and Markers antibody; Neuroscience antibody; Signaling Transduction antibody
Calculated Mw	28 kDa
PTM	The delta, brain-specific form differs from the zeta form in being phosphorylated (By similarity). Phosphorylation on Ser-184 by MAPK8; promotes dissociation of BAX and translocation of BAX to mitochondria. Phosphorylation on Thr-232; inhibits binding of RAF1. Phosphorylated on Ser-58 by PKA and protein kinase C delta type catalytic subunit in a sphingosine-dependent fashion. Phosphorylation on Ser-58 by PKA; disrupts homodimerization and heterodimerization with YHAE and TP53.

Images

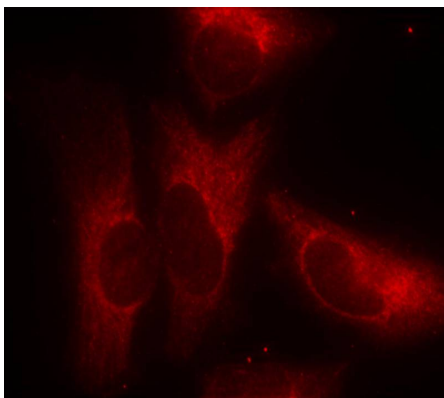
ARG51676 anti-14-3-3 zeta phospho (Ser58) antibody WB image

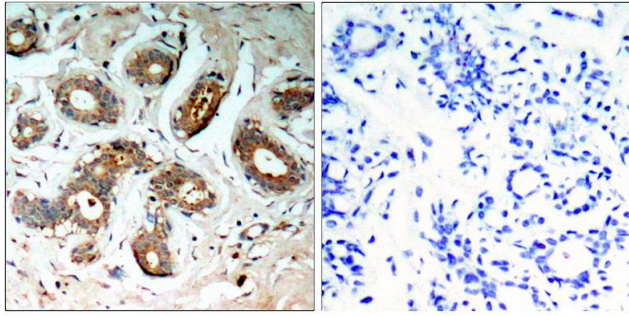
Western blot: 30 µg of Rat brain lysate stained with ARG51676 anti-14-3-3 zeta phospho (Ser58) antibody at 1:500 dilution.



ARG51676 anti-14-3-3 zeta phospho (Ser58) antibody ICC/IF image

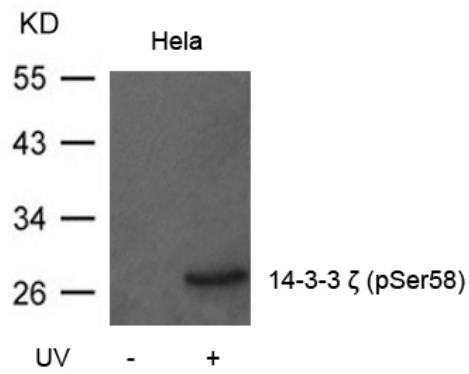
Immunofluorescence: methanol-fixed HeLa cells stained with ARG51676 anti-14-3-3 zeta phospho (Ser58) antibody.





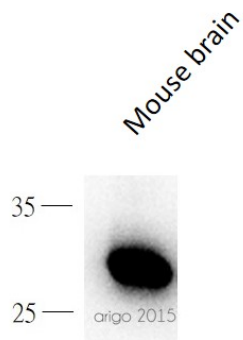
ARG51676 anti-14-3-3 zeta phospho (Ser58) antibody IHC-P image

Immunohistochemistry: Paraffin-embedded Human breast carcinoma tissue stained with ARG51676 anti-14-3-3 zeta phospho (Ser58) antibody (left) or the same antibody preincubated with blocking peptide (right).



ARG51676 anti-14-3-3 zeta phospho (Ser58) antibody WB image

Western blot: Extracts from HeLa cells untreated or treated with UV stained with ARG51676 anti-14-3-3 zeta phospho (Ser58) antibody.



ARG51676 anti-14-3-3 zeta phospho (Ser58) antibody WB image

Western blot: 30 µg of Mouse brain lysate stained with ARG51676 anti-14-3-3 zeta phospho (Ser58) antibody at 1:500 dilution.