

ARG51283
anti-SHP2 antibodyPackage: 100 µl, 50 µl
Store at: -20°C

Summary

Product Description	Rabbit Polyclonal antibody recognizes SHP2
Tested Reactivity	Hu, Ms, Rat
Tested Application	ICC/IF, IHC-P, WB
Host	Rabbit
Clonality	Polyclonal
Isotype	IgG
Target Name	SHP2
Species	Human
Immunogen	Peptide sequence around aa.578~582 (R-V-Y-E-N) derived from Human SHP-2.
Conjugation	Un-conjugated
Alternate Names	BPTP3; SHP-2; Protein-tyrosine phosphatase 2C; METCDS; PTP2C; Tyrosine-protein phosphatase non-receptor type 11; PTP-1D; CFC; PTP-2C; JMML; Shp2; Protein-tyrosine phosphatase 1D; NS1; EC 3.1.3.48; SH-PTP2; SH-PTP3; SHP2

Application Instructions

Application table	Application	Dilution
	ICC/IF	1:100 - 1:200
	IHC-P	1:50 - 1:100
	WB	1:500 - 1:1000

Application Note * The dilutions indicate recommended starting dilutions and the optimal dilutions or concentrations should be determined by the scientist.

Properties

Form	Liquid
Purification	Antibodies were produced by immunizing rabbits with KLH-conjugated synthetic peptide. Antibodies were purified by affinity-chromatography using epitope-specific peptide.
Buffer	PBS (without Mg ²⁺ and Ca ²⁺ , pH 7.4), 150mM NaCl, 0.02% Sodium azide and 50% Glycerol.
Preservative	0.02% Sodium azide
Stabilizer	50% Glycerol
Concentration	1 mg/ml
Storage instruction	For continuous use, store undiluted antibody at 2-8°C for up to a week. For long-term storage, aliquot and store at -20°C. Storage in frost free freezers is not recommended. Avoid repeated freeze/thaw cycles. Suggest spin the vial prior to opening. The antibody solution should be gently mixed before use.

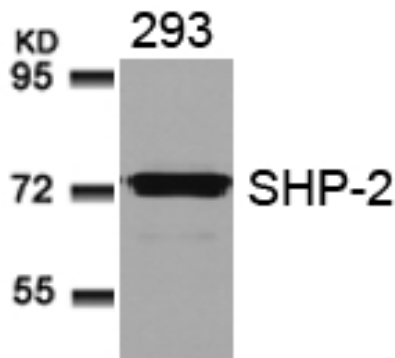
Note

For laboratory research only, not for drug, diagnostic or other use.

Bioinformation

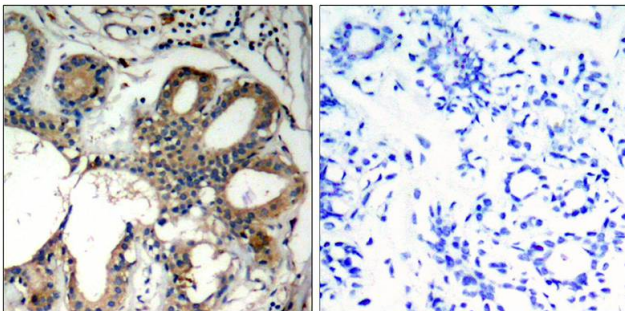
Gene Symbol	PTPN11
Gene Full Name	protein tyrosine phosphatase, non-receptor type 11
Background	Acts downstream of various receptor and cytoplasmic protein tyrosine kinases to participate in the signal transduction from the cell surface to the nucleus.
Function	Acts downstream of various receptor and cytoplasmic protein tyrosine kinases to participate in the signal transduction from the cell surface to the nucleus. Dephosphorylates ROCK2 at Tyr-722 resulting in stimulation of its RhoA binding activity. [UniProt]
Research Area	Neuroscience antibody; Signaling Transduction antibody
Calculated Mw	68 kDa
PTM	Phosphorylated on Tyr-546 and Tyr-584 upon receptor protein tyrosine kinase activation; which creates a binding site for GRB2 and other SH2-containing proteins. Phosphorylated upon activation of the receptor-type kinase FLT3. Phosphorylated upon activation of the receptor-type kinase PDGFRA (By similarity). Phosphorylated by activated PDGFRB.

Images



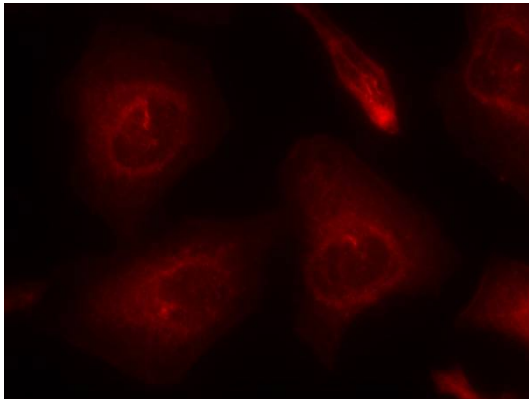
ARG51283 anti-SHP2 antibody WB image

Western blot: Extracts from 293 cells stained with ARG51283 anti-SHP2 antibody.



ARG51283 anti-SHP2 antibody IHC-P image

Immunohistochemistry: Paraffin-embedded Human breast carcinoma tissue stained with ARG51283 anti-SHP2 antibody (left) or the same antibody preincubated with blocking peptide (right).



ARG51283 anti-SHP2 antibody ICC/IF image

Immunofluorescence: methanol-fixed HeLa cells stained with ARG51283 anti-SHP2 antibody.