

## ARG45965 anti-67 kDa Laminin Receptor antibody [RP-01] (Biotin)

Package: 100 µg  
Store at: -20°C

### Summary

Product Description	Biotin-conjugated Mouse Monoclonal antibody [RP-01] recognizes 67 kDa Laminin Receptor
Tested Reactivity	Hu, Ms, Chk, Cow, Xenopus
Tested Application	ELISA, FACS, ICC/IF, IHC-P, IP, WB
Host	Mouse
Clonality	Monoclonal
Clone	RP-01
Isotype	IgG2a
Target Name	67 kDa Laminin Receptor
Species	Human
Conjugation	Biotin
Alternate Names	RPSA; ribosomal protein SA; RPSA; Colon carcinoma laminin-binding protein; 67LR; lamR; 37LRP; 37/67 kDa laminin receptor; p40; LBP; LRP; Laminin-binding protein precursor p40; LamR; 40S ribosomal protein SA; Laminin receptor 1; LRP/LR; ICAS; LAMR1; LBP/p40; NEM/1CHD4; 37 kDa laminin receptor precursor; 67 kDa laminin receptor; Multidrug resistance-associated protein MGr1-Ag; SA; LAMBR

### Application Instructions

Application table	Application	Dilution
	ELISA	Assay-dependent
	FACS	2-10 µg/ml
	ICC/IF	Assay-dependent
	IHC-P	Assay-dependent
	IP	Assay-dependent
	WB	1-2 µg/ml
Application Note	* The dilutions indicate recommended starting dilutions and the optimal dilutions or concentrations should be determined by the scientist.	
Observed Size	37 kDa	

### Properties

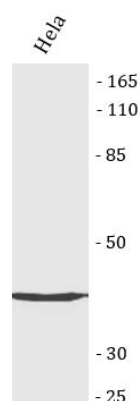
Form	Liquid
Purification	Purified antibody is conjugated with biotin LC-NHS ester under optimum conditions. The conjugate was purified by size-exclusion chromatography.
Buffer	PBS and 15 mM Sodium azide.

Preservative	15 mM Sodium azide
Concentration	1 mg/ml
Storage instruction	For continuous use, store undiluted antibody at 2-8°C for up to a week. For long-term storage, aliquot and store at -20°C or below. Storage in frost free freezers is not recommended. Avoid repeated freeze/thaw cycles. Suggest spin the vial prior to opening. The antibody solution should be gently mixed before use.
Note	For laboratory research only, not for drug, diagnostic or other use.

## Bioinformation

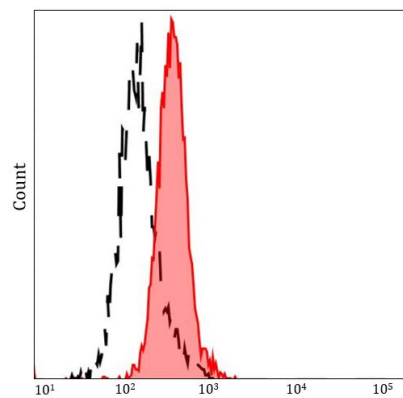
Gene Symbol	RPSA
Gene Full Name	ribosomal protein SA
Background	Laminins, a family of extracellular matrix glycoproteins, are the major noncollagenous constituent of basement membranes. They have been implicated in a wide variety of biological processes including cell adhesion, differentiation, migration, signaling, neurite outgrowth and metastasis. Many of the effects of laminin are mediated through interactions with cell surface receptors. These receptors include members of the integrin family, as well as non-integrin laminin-binding proteins. This gene encodes a high-affinity, non-integrin family, laminin receptor 1. This receptor has been variously called 67 kD laminin receptor, 37 kD laminin receptor precursor (37LRP) and p40 ribosome-associated protein. The amino acid sequence of laminin receptor 1 is highly conserved through evolution, suggesting a key biological function. It has been observed that the level of the laminin receptor transcript is higher in colon carcinoma tissue and lung cancer cell line than their normal counterparts. Also, there is a correlation between the upregulation of this polypeptide in cancer cells and their invasive and metastatic phenotype. Multiple copies of this gene exist, however, most of them are pseudogenes thought to have arisen from retropositional events. Two alternatively spliced transcript variants encoding the same protein have been found for this gene. [provided by RefSeq, Jul 2008]
Function	Required for the assembly and/or stability of the 40S ribosomal subunit. Required for the processing of the 20S rRNA-precursor to mature 18S rRNA in a late step of the maturation of 40S ribosomal subunits. Also functions as a cell surface receptor for laminin. Plays a role in cell adhesion to the basement membrane and in the consequent activation of signaling transduction pathways. May play a role in cell fate determination and tissue morphogenesis. Acts as a PPP1R16B-dependent substrate of PPP1CA. Also acts as a receptor for several other ligands, including the pathogenic prion protein, viruses, and bacteria. [UniProt]
PTM	Acetylation; Isopeptide bond; Phosphoprotein; Ubl conjugation . [UniProt]
Cellular Localization	Cell membrane; Cytoplasm; Nucleus. [UniProt]

## Images



ARG45965 anti-67 kDa Laminin Receptor antibody [RP-01] (Biotin)  
FACS image

Flow Cytometry: HeLa stained with ARG45965 anti-67 kDa Laminin Receptor antibody [RP-01] (Biotin) at 2 µg/ml dilution.



ARG45965 anti-67 kDa Laminin Receptor antibody [RP-01] (Biotin)  
FACS image

Flow Cytometry: Hela stained with ARG45965 anti-67 kDa Laminin Receptor antibody [RP-01] (Biotin) at 7.5  $\mu\text{g/ml}$  dilution.