

## ARG45882 anti-XPG antibody

Package: 50 µg  
Store at: -20°C

### Summary

Product Description	Rabbit Polyclonal antibody recognizes XPG
Tested Reactivity	Hu, Ms, Rat
Tested Application	FACS, ICC/IF, IHC-P, WB
Host	Rabbit
Clonality	Polyclonal
Isotype	IgG
Target Name	XPG
Species	Human
Immunogen	Recombinant protein containing to human XPG.
Conjugation	Un-conjugated
Alternate Names	ERCC Excision Repair 5, Endonuclease; ERCC5; ERCM2; XPG; XPGC; DNA repair protein complementing XP-G cells; EC 3.1.-.-; DNA excision repair protein ERCC-5; Xeroderma pigmentosum group G-complementing protein

### Application Instructions

Application table	Application	Dilution
	FACS	1 - 3 µg/10 <sup>6</sup> cells
	ICC/IF	5 µg/ml
	IHC-P	2-5 µg/ml
	WB	0.25-0.5 µg/ml
Application Note	* The dilutions indicate recommended starting dilutions and the optimal dilutions or concentrations should be determined by the scientist.	
Observed Size	200 kDa	

### Properties

Form	Liquid
Purification	Affinity chromatography purified
Buffer	0.2% Na <sub>2</sub> HPO <sub>4</sub> , 0.9% NaCl and 4% Trehalose.
Stabilizer	4% Trehalose
Concentration	0.5 mg/ml
Storage instruction	For continuous use, store undiluted antibody at 2-8°C for up to a week. For long-term storage, aliquot and store at -22°C or below. Storage in frost free freezers is not recommended. Avoid repeated freeze/thaw cycles. Suggest spin the vial prior to opening. The antibody solution should be gently mixed

before use.

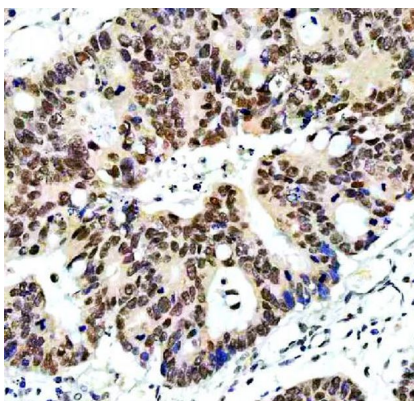
Note

For laboratory research only, not for drug, diagnostic or other use.

## Bioinformation

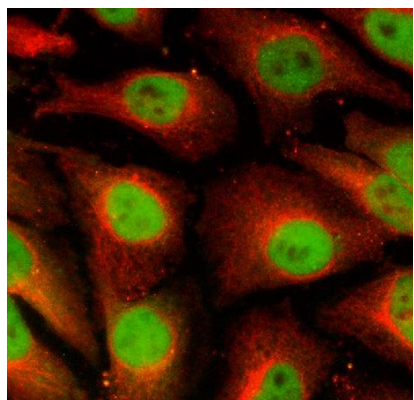
Gene Symbol	ERCC5
Gene Full Name	ERCC Excision Repair 5, Endonuclease
Background	This gene encodes a single-strand specific DNA endonuclease that makes the 3' incision in DNA excision repair following UV-induced damage. The protein may also function in other cellular processes, including RNA polymerase II transcription, and transcription-coupled DNA repair. Mutations in this gene cause xeroderma pigmentosum complementation group G (XP-G), which is also referred to as xeroderma pigmentosum VII (XP7), a skin disorder characterized by hypersensitivity to UV light and increased susceptibility for skin cancer development following UV exposure. Some patients also develop Cockayne syndrome, which is characterized by severe growth defects, cognitive disability, and cachexia. Read-through transcription exists between this gene and the neighboring upstream BIVM (basic, immunoglobulin-like variable motif containing) gene. [provided by RefSeq, Feb 2011]
Function	Single-stranded structure-specific DNA endonuclease involved in DNA excision repair. [UniProt]
Calculated Mw	133 kDa
PTM	Acetylation; Phosphoprotein. [UniProt]
Cellular Localization	Chromosome; Nucleus. [UniProt]

## Images



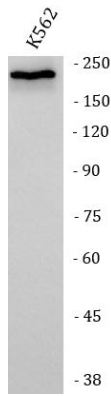
ARG45882 anti-XPG antibody IHC-P image

Immunohistochemistry: Human colon cancer stained with ARG45882 anti-XPG antibody at 2 µg/ml dilution.



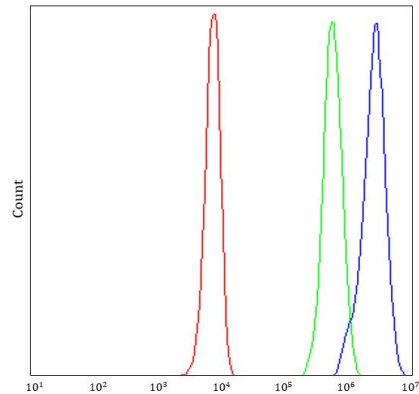
ARG45882 anti-XPG antibody ICC/IF image

Immunofluorescence: ERCC5 stained with ARG45882 anti-XPG antibody at 5 µg/ml dilution.



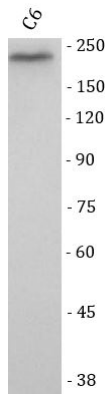
#### ARG45882 anti-XPG antibody WB image

Western blot: K562 stained with ARG45882 anti-XPG antibody at 0.5  $\mu\text{g/ml}$  dilution.



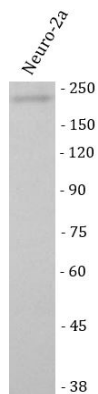
#### ARG45882 anti-XPG antibody FACS image

Flow Cytometry: K562 stained with ARG45882 anti-XPG antibody at 1  $\mu\text{g}/10^6$  cells dilution.



#### ARG45882 anti-XPG antibody WB image

Western blot: C6 stained with ARG45882 anti-XPG antibody at 0.5  $\mu\text{g/ml}$  dilution.



#### ARG45882 anti-XPG antibody WB image

Western blot: Neuro-2a stained with ARG45882 anti-XPG antibody at 0.5  $\mu\text{g/ml}$  dilution.