

ARG45863
anti-Zebrafish TMEM242 antibodyPackage: 200 µl
Store at: -20°C

Summary

| | |
|---------------------|---|
| Product Description | Rabbit Polyclonal antibody recognizes TMEM242 |
| Tested Reactivity | Zfish |
| Tested Application | IHC-P |
| Host | Rabbit |
| Clonality | Polyclonal |
| Isotype | IgG |
| Target Name | TMEM242 |
| Species | Zebrafish |
| Conjugation | Un-conjugated |
| Alternate Names | TMEM242; Transmembrane Protein 242; C6orf35; BM033; UPF0463 Transmembrane Protein C6orf35; Chromosome 6 Open Reading Frame 35 |

Application Instructions

| | | |
|-------------------|--|-----------|
| Application table | Application | Dilution |
| | IHC-P | 2-5 µg/ml |
| Application Note | * The dilutions indicate recommended starting dilutions and the optimal dilutions or concentrations should be determined by the scientist. | |

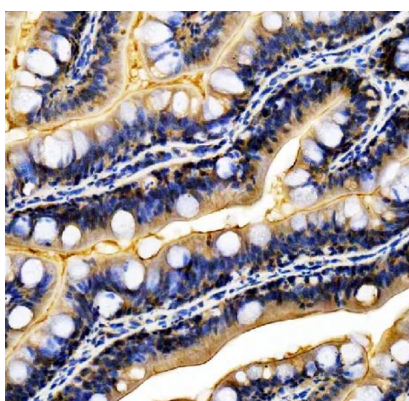
Properties

| | |
|---------------------|--|
| Form | Liquid |
| Purification | Affinity chromatography purified |
| Buffer | 0.02M PBS, 0.02% Sodium azide and 50% Glycerol. |
| Preservative | 0.02% Sodium azide |
| Stabilizer | 50% Glycerol |
| Concentration | 0.5 mg/ml |
| Storage instruction | For continuous use, store undiluted antibody at 2-8°C for up to a week. For long-term storage, aliquot and store at -20°C or below. Storage in frost free freezers is not recommended. Avoid repeated freeze/thaw cycles. Suggest spin the vial prior to opening. The antibody solution should be gently mixed before use. |
| Note | For laboratory research only, not for drug, diagnostic or other use. |

Bioinformation

| | |
|-----------------------|---|
| Gene Symbol | TMEM242 |
| Gene Full Name | Transmembrane Protein 242 |
| Background | Involved in mitochondrial proton-transporting ATP synthase complex assembly. Located in mitochondrial inner membrane. [provided by Alliance of Genome Resources, Feb 2025] |
| Function | Scaffold protein that participates in the c-ring assembly of mitochondrial ATP synthase (F1F0 ATP synthase or complex V) by facilitating the membrane insertion and oligomer formation of the subunit c/ATP5MC3.. [UniProt] |
| Calculated Mw | 15 kDa |
| PTM | Acetylation. [UniProt] |
| Cellular Localization | Mitochondrion inner membrane. [UniProt] |

Images



ARG45863 anti-Zebrafish TMEM242 antibody IHC-P image

Immunohistochemistry: Zebrafish intestine stained with ARG45863 anti-Zebrafish TMEM242 antibody at 2 µg/ml dilution.
