

ARG45859 anti-Zebrafish sim1a antibody

Package: 200 µl
Store at: -20°C

Summary

Product Description	Rabbit Polyclonal antibody recognizes sim1a
Tested Reactivity	Zfish
Tested Application	WB
Host	Rabbit
Clonality	Polyclonal
Isotype	IgG
Target Name	sim1a
Species	Zebrafish
Conjugation	Un-conjugated
Alternate Names	SIM1A; SIM BHLH Transcription Factor 1A;

Application Instructions

Application table	Application	Dilution
	WB	0.1-0.5 µg/ml
Application Note	* The dilutions indicate recommended starting dilutions and the optimal dilutions or concentrations should be determined by the scientist.	
Observed Size	82 kDa	

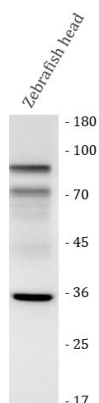
Properties

Form	Liquid
Purification	Affinity chromatography purified
Buffer	0.02M PBS, 0.02% Sodium azide and 50% Glycerol.
Preservative	0.02% Sodium azide
Stabilizer	50% Glycerol
Concentration	0.5 mg/ml
Storage instruction	For continuous use, store undiluted antibody at 2-8°C for up to a week. For long-term storage, aliquot and store at -20°C or below. Storage in frost free freezers is not recommended. Avoid repeated freeze/thaw cycles. Suggest spin the vial prior to opening. The antibody solution should be gently mixed before use.
Note	For laboratory research only, not for drug, diagnostic or other use.

Bioinformation

Gene Symbol	SIM1A
Gene Full Name	SIM BHLH Transcription Factor 1A
Function	Transcriptional factor that may have pleiotropic effects during embryogenesis and in the adult.. [UniProt]
Calculated Mw	82 kDa
Cellular Localization	Nucleus. [UniProt]

Images



ARG45859 anti-Zebrafish sim1a antibody WB image

Western blot: Zebrafish head stained with ARG45859 anti-Zebrafish sim1a antibody at 0.5 µg/ml dilution.