

ARG45829 anti-Zebrafish ABCC12 antibody

Package: 200 µl
Store at: -20°C

Summary

Product Description	Rabbit Polyclonal antibody recognizes ABCC12
Tested Reactivity	Zfsh
Tested Application	IHC-P
Host	Rabbit
Clonality	Polyclonal
Isotype	IgG
Target Name	ABCC12
Species	Zebrafish
Conjugation	Un-conjugated
Alternate Names	ABCC12; ATP Binding Cassette Subfamily C Member 12; MRP9; ATP-Binding Cassette, Sub-Family C (CFTR/MRP), Member 12; ATP-Binding Cassette Sub-Family C Member 12; Multidrug Resistance-Associated Protein 9; ATP-Binding Cassette Transporter Sub-Family C Member 12

Application Instructions

Application table	Application	Dilution
	IHC-P	2-5 µg/ml
Application Note	* The dilutions indicate recommended starting dilutions and the optimal dilutions or concentrations should be determined by the scientist.	

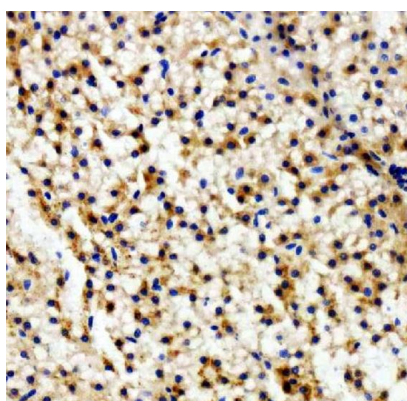
Properties

Form	Liquid
Purification	Affinity chromatography purified
Buffer	0.9% NaCl, 0.2% Na ₂ HPO ₄ , 0.02% Sodium azide and 50% glycerol.
Preservative	0.02% Sodium azide
Stabilizer	50% glycerol
Concentration	0.5 mg/ml
Storage instruction	For continuous use, store undiluted antibody at 2-8°C for up to a week. For long-term storage, aliquot and store at -20°C or below. Storage in frost free freezers is not recommended. Avoid repeated freeze/thaw cycles. Suggest spin the vial prior to opening. The antibody solution should be gently mixed before use.
Note	For laboratory research only, not for drug, diagnostic or other use.

Bioinformation

Gene Symbol	ABCC12
Gene Full Name	ATP Binding Cassette Subfamily C Member 12
Background	This gene is a member of the superfamily of ATP-binding cassette (ABC) transporters and the encoded protein contains two ATP-binding domains and 12 transmembrane regions. ABC proteins transport various molecules across extra- and intracellular membranes. ABC genes are divided into seven distinct subfamilies: ABC1, MDR/TAP, MRP, ALD, OABP, GCN20, and White. This gene is a member of the MRP subfamily which is involved in multi-drug resistance. This gene and another subfamily member are arranged head-to-tail on chromosome 16q12.1. Increased expression of this gene is associated with breast cancer. [provided by RefSeq, Jul 2008]
Function	Probable transporter, its substrate specificity is unknown.. [UniProt]
Calculated Mw	153 kDa
PTM	Glycoprotein. [UniProt]
Cellular Localization	Membrane. [UniProt]

Images



ARG45829 anti-Zebrafish ABCC12 antibody IHC-P image

Immunohistochemistry: Zebrafish colon stained with ARG45829 anti-Zebrafish ABCC12 antibody at 2 µg/ml dilution.