

ARG45828 anti-Zebrafish ABCB11 antibody

Package: 200 µl
Store at: -20°C

Summary

Product Description	Rabbit Polyclonal antibody recognizes ABCB11
Tested Reactivity	Zfsh
Tested Application	IHC-P
Host	Rabbit
Clonality	Polyclonal
Isotype	IgG
Target Name	ABCB11
Species	Zebrafish
Conjugation	Un-conjugated
Alternate Names	ABCB11; ATP-binding cassette, sub-family B (MDR/TAP), member 11; SPGP; ABC16; BRIC2; PGY4; Bile salt export pump; PFIC2; PFIC-2; ATP-binding cassette sub-family B member 11; BSEP

Application Instructions

Application table	Application	Dilution
	IHC-P	2-5 µg/ml
Application Note	* The dilutions indicate recommended starting dilutions and the optimal dilutions or concentrations should be determined by the scientist.	

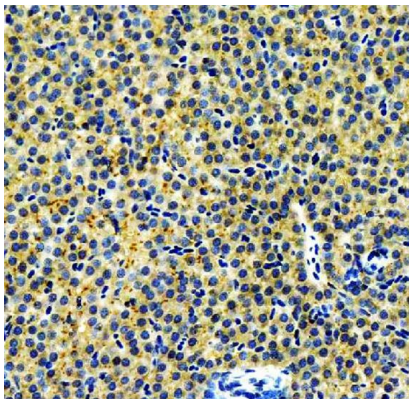
Properties

Form	Liquid
Purification	Affinity chromatography purified
Buffer	0.9% NaCl, 0.2% Na ₂ HPO ₄ , 0.02% Sodium azide and 50% glycerol.
Preservative	0.02% Sodium azide
Stabilizer	50% glycerol
Concentration	0.5 mg/ml
Storage instruction	For continuous use, store undiluted antibody at 2-8°C for up to a week. For long-term storage, aliquot and store at -20°C or below. Storage in frost free freezers is not recommended. Avoid repeated freeze/thaw cycles. Suggest spin the vial prior to opening. The antibody solution should be gently mixed before use.
Note	For laboratory research only, not for drug, diagnostic or other use.

Bioinformation

Gene Symbol	ABCB11
Gene Full Name	ATP-binding cassette, sub-family B (MDR/TAP), member 11
Background	The membrane-associated protein encoded by this gene is a member of the superfamily of ATP-binding cassette (ABC) transporters. ABC proteins transport various molecules across extra- and intra-cellular membranes. ABC genes are divided into seven distinct subfamilies (ABC1, MDR/TAP, MRP, ALD, OABP, GCN20, White). This protein is a member of the MDR/TAP subfamily. Members of the MDR/TAP subfamily are involved in multidrug resistance. The protein encoded by this gene is the major canalicular bile salt export pump in man. Mutations in this gene cause a form of progressive familial intrahepatic cholestases which are a group of inherited disorders with severe cholestatic liver disease from early infancy. [provided by RefSeq, Jul 2008]
Function	Involved in the ATP-dependent secretion of bile salts into the canaliculus of hepatocytes. [UniProt]
Calculated Mw	146 kDa
PTM	Ubl conjugation. [UniProt]
Cellular Localization	Endosomeautomatic annotation; Membrane. [UniProt]

Images



ARG45828 anti-Zebrafish ABCB11 antibody IHC-P image

Immunohistochemistry: Zebrafish liver stained with ARG45828 anti-Zebrafish ABCB11 antibody at 2 µg/ml dilution.