

ARG45683 anti-CYP2U1 antibody

Package: 50 µg
Store at: -20°C

Summary

Product Description	Rabbit Polyclonal antibody recognizes CYP2U1
Tested Reactivity	Hu
Tested Application	ICC/IF, IHC-P, WB
Host	Rabbit
Clonality	Polyclonal
Isotype	IgG
Target Name	CYP2U1
Species	Human
Immunogen	Synthetic peptide corresponding to C-terminal region of human CYP2U1.
Conjugation	Un-conjugated
Alternate Names	CYP2U1; Cytochrome P450 Family 2 Subfamily U Member 1; SPG49; Cytochrome P450, Family 2, Subfamily U, Polypeptide 1; Spastic Paraplegia 56 (Autosomal Dominant); Long-Chain Fatty Acid Omega-Monooxygenase; Spastic Paraplegia 49; Cytochrome P450 2U1; SPG56; EC 1.14.14.80; EC 1.14.14.1 47; P450TEC

Application Instructions

Application table	Application	Dilution
	ICC/IF	0.5-1 µg/ml
	IHC-P	0.5-1 µg/ml
	WB	0.1-0.5 µg/ml
Application Note	* The dilutions indicate recommended starting dilutions and the optimal dilutions or concentrations should be determined by the scientist.	

Properties

Form	Liquid
Purification	Affinity purified
Buffer	0.9% NaCl, 0.2% Na2HPO4, 0.05% Thimerosal, 0.05% Sodium azide and 5% BSA.
Preservative	0.05% Thimerosal and 0.05% Sodium azide
Stabilizer	5% BSA
Concentration	0.5 mg/ml
Storage instruction	For continuous use, store undiluted antibody at 2-8°C for up to a week. For long-term storage, aliquot and store at -20°C or below. Storage in frost free freezers is not recommended. Avoid repeated freeze/thaw cycles. Suggest spin the vial prior to opening. The antibody solution should be gently mixed

before use.

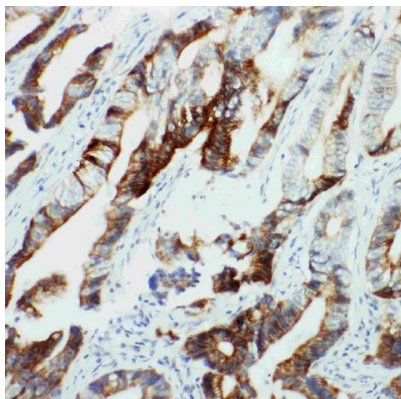
Note

For laboratory research only, not for drug, diagnostic or other use.

Bioinformation

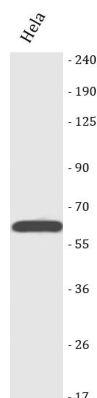
Gene Symbol	CYP2U1
Gene Full Name	Cytochrome P450 Family 2 Subfamily U Member 1
Background	This gene encodes a member of the cytochrome P450 superfamily of enzymes. The cytochrome P450 proteins are monooxygenases which catalyze many reactions involved in drug metabolism and synthesis of cholesterol, steroids and other lipids. This enzyme is a hydroxylase that metabolizes arachidonic acid, docosahexaenoic acid, and other long chain fatty acids. [provided by RefSeq, Jul 2008]
Function	A cytochrome P450 monooxygenase involved in the metabolism of arachidonic acid and its conjugates. [UniProt]
Calculated Mw	62 kDa
Cellular Localization	Endoplasmic reticulum; Membrane; Microsome; Mitochondrion; Mitochondrion inner membrane. [UniProt]

Images



ARG45683 anti-CYP2U1 antibody IHC-P image

Immunohistochemistry: Human intestinal cancer stained with ARG45683 anti-CYP2U1 antibody.



ARG45683 anti-CYP2U1 antibody WB image

Western blot: HeLa stained with ARG45683 anti-CYP2U1 antibody.