

ARG45673 anti-RHOT2 antibody

Package: 50 µg
Store at: -20°C

Summary

Product Description	Rabbit Polyclonal antibody recognizes RHOT2
Tested Reactivity	Hu, Ms, Rat
Tested Application	FACS, ICC/IF, IHC-P, IP, WB
Host	Rabbit
Clonality	Polyclonal
Isotype	IgG
Target Name	RHOT2
Species	Human
Immunogen	Recombinant protein containing to human RHOT2.
Conjugation	Un-conjugated
Alternate Names	RHOT2; Ras Homolog Family Member T2; MIRO-2; C16orf39; MIRO2; ARHT2; Ras Homolog Gene Family, Member T2; Mitochondrial Rho (MIRO) GTPase 2; Mitochondrial Rho GTPase 2; Chromosome 16 Open Reading Frame 39; Ras Homolog Gene Family Member T2; EC 3.6.5.-; EC 3.6.5 47; HMiro-2; RASL

Application Instructions

Application table	Application	Dilution
	FACS	1 - 3 µg/10 ⁶ cells
	ICC/IF	5 µg/ml
	IHC-P	2-5 µg/ml
	IP	0.5-2 µg/ml
	WB	0.25-0.5 µg/ml
Application Note	* The dilutions indicate recommended starting dilutions and the optimal dilutions or concentrations should be determined by the scientist.	
Observed Size	80 kDa	

Properties

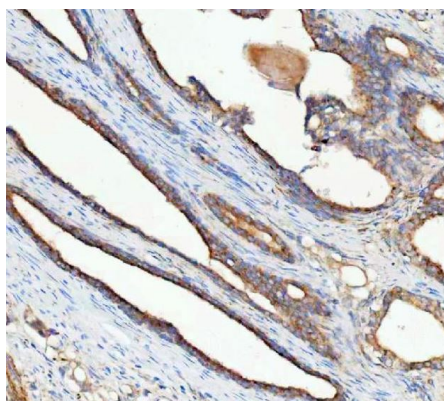
Form	Liquid
Purification	Affinity purified
Buffer	0.2% Na ₂ HPO ₄ , 0.9% NaCl and 4% Trehalose.
Stabilizer	4% Trehalose
Concentration	0.5 mg/ml

Storage instruction	For continuous use, store undiluted antibody at 2-8°C for up to a week. For long-term storage, aliquot and store at -20°C or below. Storage in frost free freezers is not recommended. Avoid repeated freeze/thaw cycles. Suggest spin the vial prior to opening. The antibody solution should be gently mixed before use.
Note	For laboratory research only, not for drug, diagnostic or other use.

Bioinformation

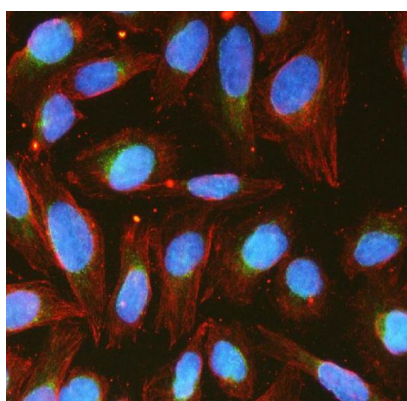
Gene Symbol	RHOT2
Gene Full Name	Ras Homolog Family Member T2
Background	This gene encodes a member of the Rho family of GTPases. The encoded protein is localized to the outer mitochondrial membrane and plays a role in mitochondrial trafficking and fusion-fission dynamics. [provided by RefSeq, Nov 2011]
Function	Mitochondrial GTPase involved in mitochondrial trafficking. [UniProt]
Calculated Mw	68 kDa
Cellular Localization	Membrane; Mitochondrion; Mitochondrion outer membrane. [UniProt]

Images



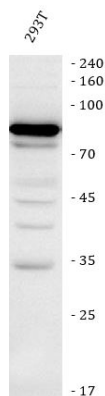
ARG45673 anti-RHOT2 antibody IHC-P image

Immunohistochemistry: Human prostate cancer stained with ARG45673 anti-RHOT2 antibody at 2 µg/ml dilution.



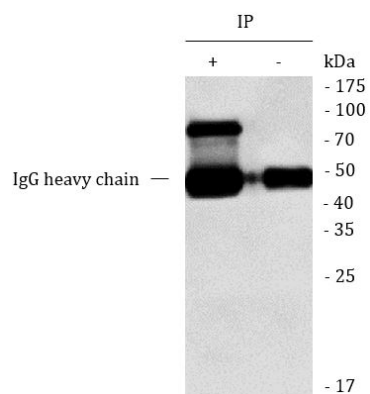
ARG45673 anti-RHOT2 antibody ICC/IF image

Immunofluorescence: U2OS stained with ARG45673 anti-RHOT2 antibody at 5 µg/ml dilution.



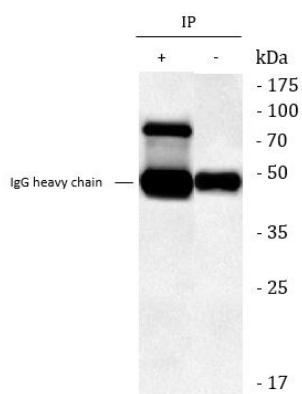
ARG45673 anti-RHOT2 antibody WB image

Western blot: 293T stained with ARG45673 anti-RHOT2 antibody at 0.5 µg/ml dilution.



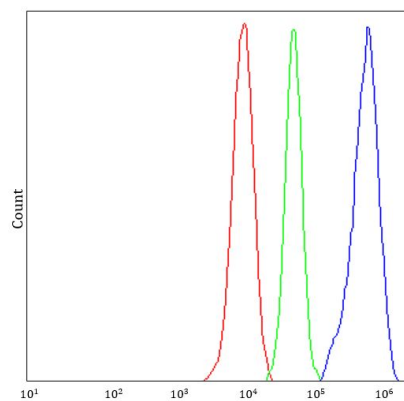
ARG45673 anti-RHOT2 antibody IP image

Immunoprecipitation: MCF-7 lysate immunoprecipitated with 2 µg ARG45673 anti-RHOT2 antibody.



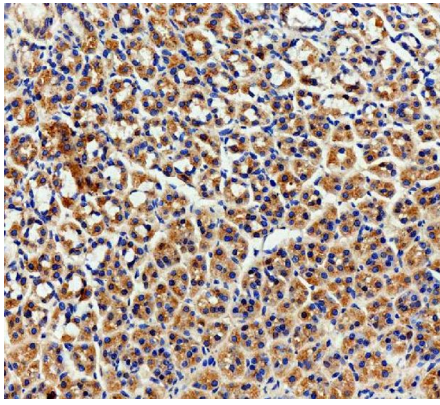
ARG45673 anti-RHOT2 antibody IP image

Immunoprecipitation: MCF-7 lysate immunoprecipitated with 2 µg ARG45673 anti-RHOT2 antibody.



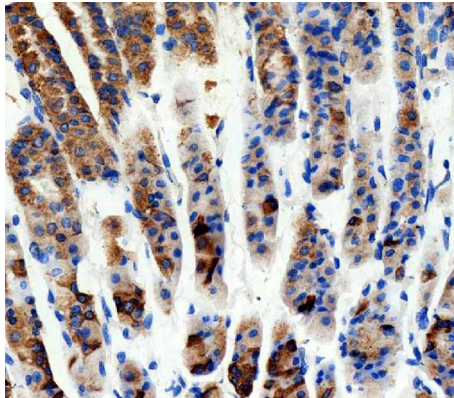
ARG45673 anti-RHOT2 antibody FACS image

Flow Cytometry: MCF-7 stained with ARG45673 anti-RHOT2 antibody at 1 µg/10⁶ cells dilution.



ARG45673 anti-RHOT2 antibody IHC-P image

Immunohistochemistry: Rat stomach stained with ARG45673 anti-RHOT2 antibody at 2 µg/ml dilution.



ARG45673 anti-RHOT2 antibody IHC-P image

Immunohistochemistry: Mouse stomach stained with ARG45673 anti-RHOT2 antibody at 2 µg/ml dilution.
