

## ARG45670 anti-CHCHD10 antibody

Package: 50 µg  
Store at: -20°C

### Summary

Product Description	Rabbit Polyclonal antibody recognizes CHCHD10
Tested Reactivity	Hu, Ms, Rat, Mk
Tested Application	FACS, ICC/IF, IHC-P, WB
Host	Rabbit
Clonality	Polyclonal
Isotype	IgG
Target Name	CHCHD10
Species	Human
Immunogen	Recombinant protein containing to human CHCHD10.
Conjugation	Un-conjugated
Alternate Names	CHCHD10; Coiled-Coil-Helix-Coiled-Coil-Helix Domain Containing 10; C22orf16; N27C7-4; MIX17A; Coiled-Coil-Helix-Coiled-Coil-Helix Domain-Containing Protein 10, Mitochondrial; MIX17 Homolog A; Chromosome 22 Open Reading Frame 16; Protein N27C7-4; FTDALS2; IMMD; SMAJ

### Application Instructions

Application table	Application	Dilution
	FACS	1 - 3 µg/10 <sup>6</sup> cells
	ICC/IF	5 µg/ml
	IHC-P	2-5 µg/ml
	WB	0.1-0.25 µg/ml
Application Note	* The dilutions indicate recommended starting dilutions and the optimal dilutions or concentrations should be determined by the scientist.	
Observed Size	15 kDa	

### Properties

Form	Liquid
Purification	Affinity purified
Buffer	0.2% Na <sub>2</sub> HPO <sub>4</sub> , 0.9% NaCl and 4% Trehalose.
Stabilizer	4% Trehalose
Concentration	0.5 mg/ml
Storage instruction	For continuous use, store undiluted antibody at 2-8°C for up to a week. For long-term storage, aliquot and store at -20°C or below. Storage in frost free freezers is not recommended. Avoid repeated freeze/thaw cycles. Suggest spin the vial prior to opening. The antibody solution should be gently mixed

before use.

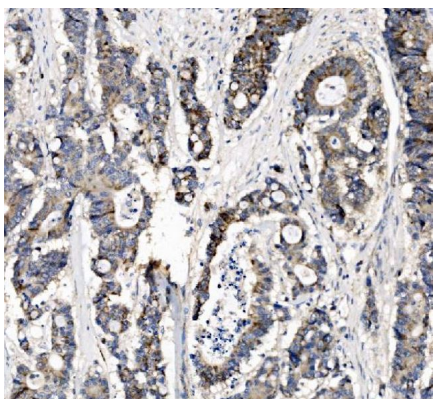
#### Note

For laboratory research only, not for drug, diagnostic or other use.

## Bioinformation

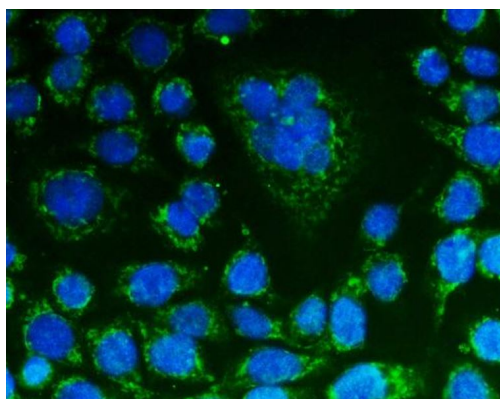
Gene Symbol	CHCHD10
Gene Full Name	Coiled-Coil-Helix-Coiled-Coil-Helix Domain Containing 10
Background	This gene encodes a mitochondrial protein that is enriched at cristae junctions in the intermembrane space. It may play a role in cristae morphology maintenance or oxidative phosphorylation. Mutations in this gene cause frontotemporal dementia and/or amyotrophic lateral sclerosis-2. Alternative splicing of this gene results in multiple transcript variants. Related pseudogenes have been identified on chromosomes 7 and 19. [provided by RefSeq, Aug 2014]
Function	May be involved in the maintenance of mitochondrial organization and mitochondrial cristae structure. [UniProt]
Calculated Mw	14 kDa
PTM	Disulfide bond. [UniProt]
Cellular Localization	Mitochondrion. [UniProt]

## Images



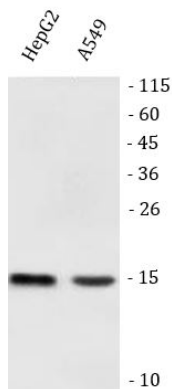
ARG45670 anti-CHCHD10 antibody IHC-P image

Immunohistochemistry: Human colonic adenocarcinoma stained with ARG45670 anti-CHCHD10 antibody at 2 µg/ml dilution.



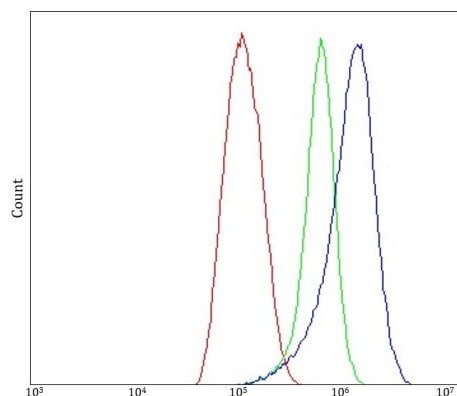
ARG45670 anti-CHCHD10 antibody ICC/IF image

Immunofluorescence: CACO-2 stained with ARG45670 anti-CHCHD10 antibody at 5 µg/ml dilution.



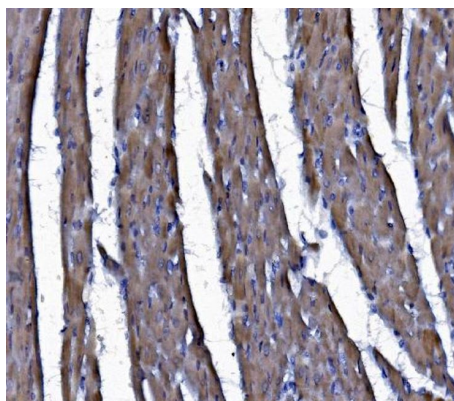
ARG45670 anti-CHCHD10 antibody WB image

Western blot: HepG2 and A549 stained with ARG45670 anti-CHCHD10 antibody at 0.5  $\mu\text{g}/\text{ml}$  dilution.



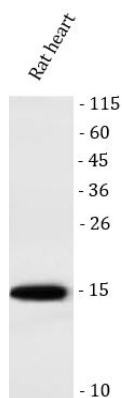
ARG45670 anti-CHCHD10 antibody FACS image

Flow Cytometry: THP-1 stained with ARG45670 anti-CHCHD10 antibody at 1  $\mu\text{g}/10^6$  cells dilution.



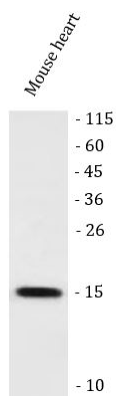
ARG45670 anti-CHCHD10 antibody IHC-P image

Immunohistochemistry: Rat cardiac muscle stained with ARG45670 anti-CHCHD10 antibody at 2  $\mu\text{g}/\text{ml}$  dilution.



ARG45670 anti-CHCHD10 antibody WB image

Western blot: Rat heart stained with ARG45670 anti-CHCHD10 antibody at 0.5  $\mu\text{g}/\text{ml}$  dilution.



#### ARG45670 anti-CHCHD10 antibody WB image

Western blot: Mouse heart stained with ARG45670 anti-CHCHD10 antibody at 0.5 µg/ml dilution.