

ARG45625 anti-KLK5 antibody

Package: 50 µg
Store at: -20°C

Summary

Product Description	Rabbit Polyclonal antibody recognizes KLK5
Tested Reactivity	Ms, Rat
Tested Application	IHC-P, WB
Host	Rabbit
Clonality	Polyclonal
Isotype	IgG
Target Name	KLK5
Species	Mouse
Immunogen	Synthetic peptide corresponding to C-terminal region of mouse KLK5.
Conjugation	Un-conjugated
Alternate Names	KLK5; Kallikrein Related Peptidase 5; Stratum corneum tryptic enzyme; Kallikrein-like protein 2; KLKL2; KLK-L2; Kallikrein-5; EC 3.4.21.-; SCTE

Application Instructions

Application table	Application	Dilution
	IHC-P	0.5-1 µg/ml
	WB	0.1-0.5 µg/ml
Application Note	* The dilutions indicate recommended starting dilutions and the optimal dilutions or concentrations should be determined by the scientist.	

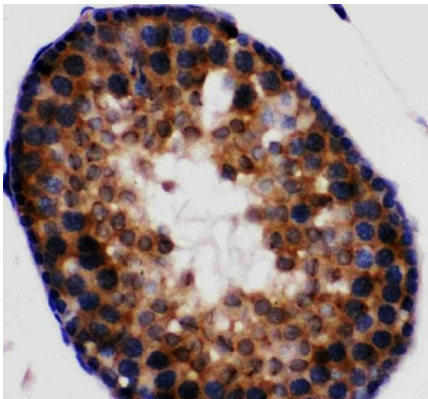
Properties

Form	Liquid
Purification	Affinity purified
Buffer	0.9% NaCl, 0.2% Na2HPO4, 0.05% Thimerosal, 0.05% Sodium azide and 5% BSA.
Preservative	0.05% Thimerosal and 0.05% Sodium azide
Stabilizer	5% BSA
Concentration	0.5 mg/ml
Storage instruction	For continuous use, store undiluted antibody at 2-8°C for up to a week. For long-term storage, aliquot and store at -20°C or below. Storage in frost free freezers is not recommended. Avoid repeated freeze/thaw cycles. Suggest spin the vial prior to opening. The antibody solution should be gently mixed before use.
Note	For laboratory research only, not for drug, diagnostic or other use.

Bioinformation

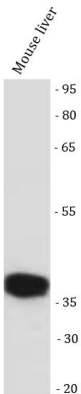
Gene Symbol	KLK5
Gene Full Name	Kallikrein Related Peptidase 5
Background	Kallikreins are a subgroup of serine proteases having diverse physiological functions. Growing evidence suggests that many kallikreins are implicated in carcinogenesis and some have potential as novel cancer and other disease biomarkers. This gene is one of the fifteen kallikrein subfamily members located in a cluster on chromosome 19. Its expression is up-regulated by estrogens and progestins. The encoded protein is secreted and may be involved in desquamation in the epidermis. Alternative splicing results in multiple transcript variants encoding the same protein. [provided by RefSeq, Jul 2008]
Calculated Mw	32 kDa
PTM	Disulfide bond. [UniProt]
Cellular Localization	epidermal lamellar body. [UniProt]

Images



ARG45625 anti-KLK5 antibody IHC-P image

Immunohistochemistry: Rat testis stained with ARG45625 anti-KLK5 antibody.



ARG45625 anti-KLK5 antibody WB image

Western blot: Mouse liver stained with ARG45625 anti-KLK5 antibody.