

ARG45623 anti-SEL1L antibody

Package: 50 µg
Store at: -20°C

Summary

Product Description	Rabbit Polyclonal antibody recognizes SEL1L
Tested Reactivity	Hu, Ms, Rat
Tested Application	FACS, ICC/IF, IHC-P, WB
Host	Rabbit
Clonality	Polyclonal
Isotype	IgG
Target Name	SEL1L
Species	Human
Immunogen	Recombinant protein containing to human SEL1L.
Conjugation	Un-conjugated
Alternate Names	SEL1L Adaptor Subunit Of SYVN1 Ubiquitin Ligase; PRO1063; SEL1L1; Sel-1L; Protein sel-1 homolog 1; SEL1-LIKE; Suppressor of lin-12-like protein 1

Application Instructions

Application table	Application	Dilution
	FACS	1 - 3 µg/10 ⁶ cells
	ICC/IF	5 µg/ml
	IHC-P	2-5 µg/ml
	WB	0.25-0.5 µg/ml
Application Note	* The dilutions indicate recommended starting dilutions and the optimal dilutions or concentrations should be determined by the scientist.	
Observed Size	100 kDa	

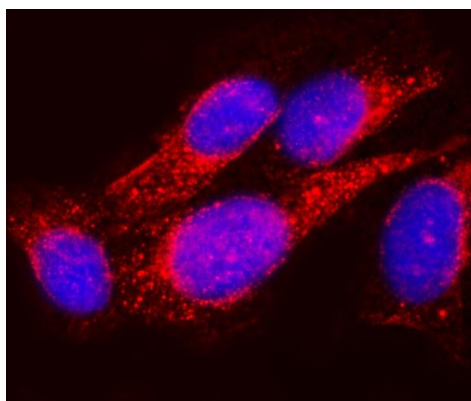
Properties

Form	Liquid
Purification	Affinity purified
Buffer	0.2% Na ₂ HPO ₄ , 0.9% NaCl and 4% Trehalose.
Stabilizer	4% Trehalose
Concentration	0.5 mg/ml
Storage instruction	For continuous use, store undiluted antibody at 2-8°C for up to a week. For long-term storage, aliquot and store at -20°C or below. Storage in frost free freezers is not recommended. Avoid repeated freeze/thaw cycles. Suggest spin the vial prior to opening. The antibody solution should be gently mixed before use.

Bioinformation

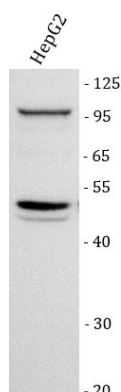
Gene Symbol	SEL1L
Gene Full Name	SEL1L Adaptor Subunit Of SYVN1 Ubiquitin Ligase
Background	The protein encoded by this gene is part of a protein complex required for the retrotranslocation or dislocation of misfolded proteins from the endoplasmic reticulum lumen to the cytosol, where they are degraded by the proteasome in a ubiquitin-dependent manner. Alternatively spliced transcript variants encoding different isoforms have been found for this gene. [provided by RefSeq, Oct 2011]
Function	Plays a role in the endoplasmic reticulum quality control (ERQC) system also called ER-associated degradation (ERAD) involved in ubiquitin-dependent degradation of misfolded endoplasmic reticulum proteins. [UniProt]
Calculated Mw	89 kDa
PTM	N-glycosylated. [UniProt]
Cellular Localization	Endoplasmic reticulum; Membrane. [UniProt]

Images



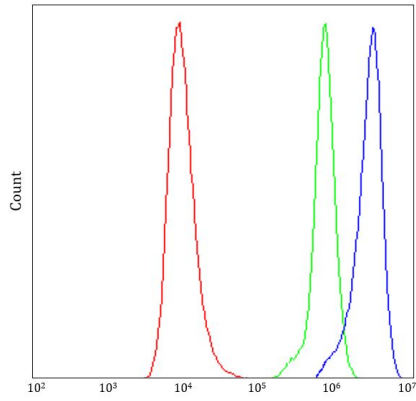
ARG45623 anti-SEL1L antibody ICC/IF image

Immunofluorescence: U2OS stained with ARG45623 anti-SEL1L antibody at 5 µg/ml dilution.



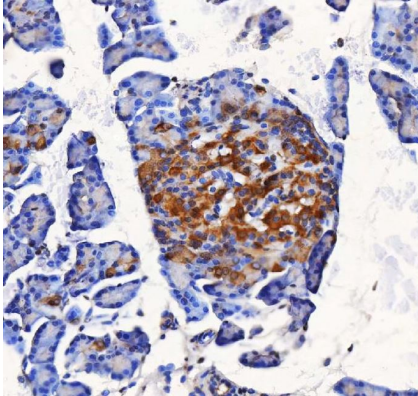
ARG45623 anti-SEL1L antibody WB image

Western blot: HepG2 stained with ARG45623 anti-SEL1L antibody at 0.5 µg/ml dilution.



ARG45623 anti-SEL1L antibody FACS image

Flow Cytometry: HEL stained with ARG45623 anti-SEL1L antibody at $1 \mu\text{g}/10^6$ cells dilution.



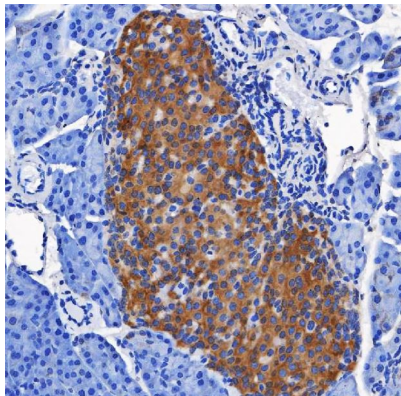
ARG45623 anti-SEL1L antibody IHC-P image

Immunohistochemistry: Rat pancreas stained with ARG45623 anti-SEL1L antibody at $2 \mu\text{g}/\text{ml}$ dilution.



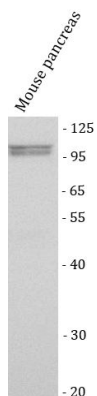
ARG45623 anti-SEL1L antibody WB image

Western blot: Rat pancreas stained with ARG45623 anti-SEL1L antibody at $0.5 \mu\text{g}/\text{ml}$ dilution.



ARG45623 anti-SEL1L antibody IHC-P image

Immunohistochemistry: Mouse pancreas stained with ARG45623 anti-SEL1L antibody at $2 \mu\text{g}/\text{ml}$ dilution.



ARG45623 anti-SEL1L antibody WB image

Western blot: Mouse pancreas stained with ARG45623 anti-SEL1L antibody at 0.5 µg/ml dilution.