

## ARG45598 anti-Crk p38 antibody

Package: 50 µg  
Store at: -20°C

### Summary

Product Description	Rabbit Polyclonal antibody recognizes Crk p38
Tested Reactivity	Hu, Ms, Rat
Tested Application	IHC-P, WB
Specificity	Crk p38
Host	Rabbit
Clonality	Polyclonal
Isotype	IgG
Target Name	Crk p38
Species	Human
Immunogen	Recombinant protein containing to human Crk p38.
Conjugation	Un-conjugated
Alternate Names	CRK; CRK Proto-Oncogene, Adaptor Protein; V-Crk Avian Sarcoma Virus CT10 Oncogene Homolog; Adapter Molecule Crk; Proto-Oncogene C-Crk; P38; V-Crk Sarcoma Virus CT10 Oncogene-Like Protein; CRKII

### Application Instructions

Application table	Application	Dilution
	IHC-P	2-5 µg/ml
	WB	0.1-0.5 µg/ml
Application Note	* The dilutions indicate recommended starting dilutions and the optimal dilutions or concentrations should be determined by the scientist.	

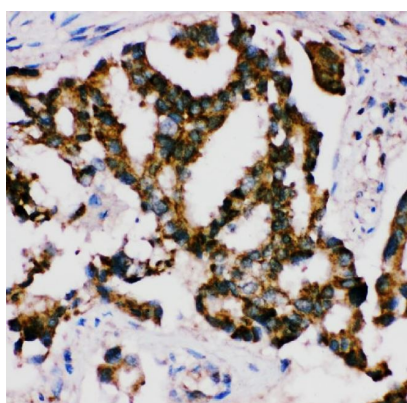
### Properties

Form	Powder
Purification	Affinity purified
Buffer	0.9% NaCl, 0.2% Na <sub>2</sub> HPO <sub>4</sub> , 0.01% Sodium azide and 5% BSA.
Preservative	0.01% Sodium azide
Stabilizer	5% BSA
Concentration	0.5 mg/ml
Storage instruction	For continuous use, store undiluted antibody at 2-8°C for up to a week. For long-term storage, aliquot and store at -20°C or below. Storage in frost free freezers is not recommended. Avoid repeated freeze/thaw cycles. Suggest spin the vial prior to opening. The antibody solution should be gently mixed before use.

## Bioinformation

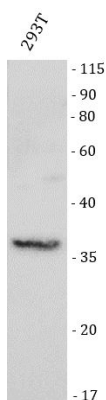
Gene Symbol	CRK
Gene Full Name	CRK Proto-Oncogene, Adaptor Protein
Background	This gene encodes a member of an adapter protein family that binds to several tyrosine-phosphorylated proteins. The product of this gene has several SH2 and SH3 domains (src-homology domains) and is involved in several signaling pathways, recruiting cytoplasmic proteins in the vicinity of tyrosine kinase through SH2-phosphotyrosine interaction. The N-terminal SH2 domain of this protein functions as a positive regulator of transformation whereas the C-terminal SH3 domain functions as a negative regulator of transformation. Two alternative transcripts encoding different isoforms with distinct biological activity have been described. [provided by RefSeq, Jul 2008]
Function	Involved in cell branching and adhesion mediated by BCAR1-CRK-RAPGEF1 signaling and activation of RAP1. [UniProt]
Calculated Mw	34 kDa
PTM	Acetylation; Phosphoprotein. [UniProt]
Cellular Localization	Cell membrane; Cytoplasm; Membrane. [UniProt]

## Images



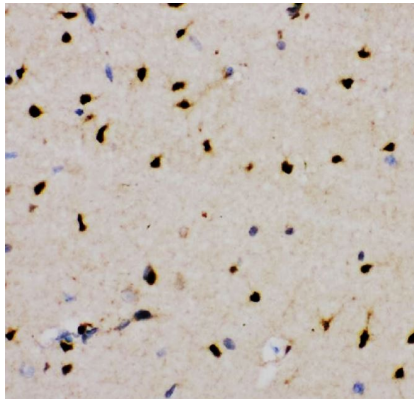
ARG45598 anti-Crk p38 antibody IHC-P image

Immunohistochemistry: Human lung cancer stained with ARG45598 anti-Crk p38 antibody at 2 µg/ml dilution.



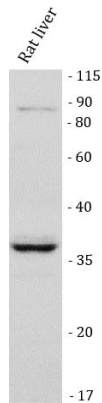
ARG45598 anti-Crk p38 antibody WB image

Western blot: 293T stained with ARG45598 anti-Crk p38 antibody at 0.5 µg/ml dilution.



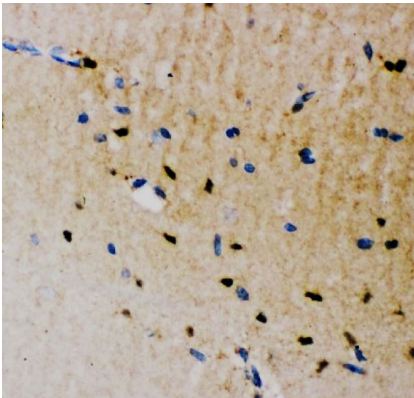
ARG45598 anti-Crk p38 antibody IHC-P image

Immunohistochemistry: Rat brain stained with ARG45598 anti-Crk p38 antibody at 2  $\mu\text{g/ml}$  dilution.



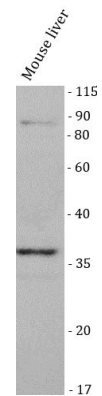
ARG45598 anti-Crk p38 antibody WB image

Western blot: Rat liver stained with ARG45598 anti-Crk p38 antibody at 0.5  $\mu\text{g/ml}$  dilution.



ARG45598 anti-Crk p38 antibody IHC-P image

Immunohistochemistry: Mouse brain stained with ARG45598 anti-Crk p38 antibody at 2  $\mu\text{g/ml}$  dilution.



ARG45598 anti-Crk p38 antibody WB image

Western blot: Mouse liver stained with ARG45598 anti-Crk p38 antibody at 0.5  $\mu\text{g/ml}$  dilution.