

ARG45558 anti-ASCL1 / MASH1 antibody

Package: 50 µg
Store at: -20°C

Summary

Product Description	Rabbit Polyclonal antibody recognizes ASCL1 / MASH1
Tested Reactivity	Hu, Ms, Rat
Tested Application	FACS, IHC-P, WB
Specificity	ASCL1 / MASH1
Host	Rabbit
Clonality	Polyclonal
Isotype	IgG
Target Name	ASCL1 / MASH1
Species	Human
Immunogen	Synthetic peptide corresponding to C-terminal region of human ASCL1 / MASH1.
Conjugation	Un-conjugated
Alternate Names	ASCL1; Achaete-Scute Family BHLH Transcription Factor 1; HASH1; BHLHa46; ASH1; Class A Basic Helix-Loop-Helix Protein 46; Achaete-Scute Homolog 1; ASH-1; Achaete-Scute Complex (Drosophila) Homolog-Like 1; Achaete-Scute Complex Homolog 1 (Drosophila); Achaete-Scute Complex-Like 1 (Drosophila); Achaete-Scute Complex Homolog 1; Achaete-Scute Complex-Like 1; Achaete Scute Protein; BHLHA46; MASH1

Application Instructions

Application table	Application	Dilution
	FACS	1 - 3 µg/10 ⁶ cells
	IHC-P	2-5 µg/ml
	WB	0.25-0.5 µg/ml
Application Note	* The dilutions indicate recommended starting dilutions and the optimal dilutions or concentrations should be determined by the scientist.	
Observed Size	30 kDa	

Properties

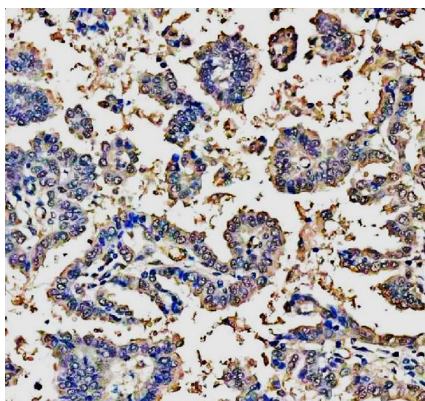
Form	Powder
Purification	Affinity purified
Buffer	0.2% Na ₂ HPO ₄ , 0.9% NaCl and 4% Trehalose.
Stabilizer	4% Trehalose
Concentration	0.5 mg/ml

Storage instruction	For continuous use, store undiluted antibody at 2-8°C for up to a week. For long-term storage, aliquot and store at -20°C or below. Storage in frost free freezers is not recommended. Avoid repeated freeze/thaw cycles. Suggest spin the vial prior to opening. The antibody solution should be gently mixed before use.
Note	For laboratory research only, not for drug, diagnostic or other use.

Bioinformation

Gene Symbol	ASCL1
Gene Full Name	Achaete-Scute Family BHLH Transcription Factor 1
Background	This gene encodes a member of the basic helix-loop-helix (BHLH) family of transcription factors. The protein activates transcription by binding to the E box (5'-CANNTG-3'). Dimerization with other BHLH proteins is required for efficient DNA binding. This protein plays a role in the neuronal commitment and differentiation and in the generation of olfactory and autonomic neurons. Mutations in this gene may contribute to the congenital central hypoventilation syndrome (CCHS) phenotype in rare cases. [provided by RefSeq, Jul 2008]
Function	Transcription factor that plays a key role in neuronal differentiation: acts as a pioneer transcription factor, accessing closed chromatin to allow other factors to bind and activate neural pathways. Directly binds the E box motif (5'-CANNTG-3') on promoters and promotes transcription of neuronal genes. The combination of three transcription factors, ASCL1, POU3F2/BRN2 and MYT1L, is sufficient to reprogram fibroblasts and other somatic cells into induced neuronal (iN) cells in vitro. Plays a role at early stages of development of specific neural lineages in most regions of the CNS, and of several lineages in the PNS. Essential for the generation of olfactory and autonomic neurons. Acts synergistically with FOXN4 to specify the identity of V2b neurons rather than V2a from bipotential p2 progenitors during spinal cord neurogenesis, probably through DLL4-NOTCH signaling activation. Involved in the regulation of neuroendocrine cell development in the glandular stomach. [UniProt]
Calculated Mw	25 kDa
PTM	Acetylation. [UniProt]
Cellular Localization	Nucleus. [UniProt]

Images



ARG45558 anti-ASCL1 / MASH1 antibody IHC-P image

Immunohistochemistry: Human lung cancer stained with ARG45558 anti-ASCL1 / MASH1 antibody at 2 µg/ml dilution.



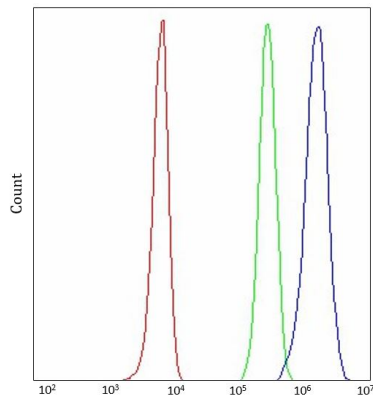
ARG45558 anti-ASCL1 / MASH1 antibody WB image

Western blot: K562 stained with ARG45558 anti-ASCL1 / MASH1 antibody at 0.5 µg/ml dilution.



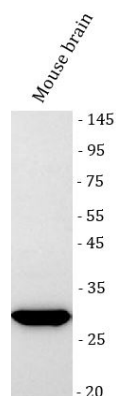
ARG45558 anti-ASCL1 / MASH1 antibody WB image

Western blot: Rat brain stained with ARG45558 anti-ASCL1 / MASH1 antibody at 0.5 µg/ml dilution.



ARG45558 anti-ASCL1 / MASH1 antibody FACS image

Flow Cytometry: K562 stained with ARG45558 anti-ASCL1 / MASH1 antibody at 1 µg/10⁶ cells dilution.



ARG45558 anti-ASCL1 / MASH1 antibody WB image

Western blot: Mouse brain stained with ARG45558 anti-ASCL1 / MASH1 antibody at 0.5 µg/ml dilution.