

ARG45556 anti-PLD5 antibody

Package: 50 µg
Store at: -20°C

Summary

| | |
|---------------------|---|
| Product Description | Rabbit Polyclonal antibody recognizes PLD5 |
| Tested Reactivity | Hu, Ms, Rat |
| Tested Application | FACS, IHC-P, WB |
| Host | Rabbit |
| Clonality | Polyclonal |
| Isotype | IgG |
| Target Name | PLD5 |
| Species | Human |
| Immunogen | Recombinant protein containing to human PLD5. |
| Conjugation | Un-conjugated |
| Alternate Names | PLD5; Phospholipase D Family Member 5; Inactive Phosphatidylcholine-Hydrolyzing Phospholipase D5; Inactive Choline Phosphatase 5; Inactive Phospholipase D5; Inactive PLD 5; FLJ40773; Phospholipase D Family, Member 5; PLDC; PLDC |

Application Instructions

| Application table | Application | Dilution |
|-------------------|--|--------------------------------|
| | FACS | 1 - 3 µg/10 ⁶ cells |
| | IHC-P | 2-5 µg/ml |
| | WB | 0.25-0.5 µg/ml |
| Application Note | * The dilutions indicate recommended starting dilutions and the optimal dilutions or concentrations should be determined by the scientist. | |
| Observed Size | 69 kDa | |

Properties

| | |
|---------------------|--|
| Form | Liquid |
| Purification | Affinity purified |
| Buffer | 0.2% Na ₂ HPO ₄ , 0.9% NaCl and 4% Trehalose. |
| Stabilizer | 4% Trehalose |
| Concentration | 0.5 mg/ml |
| Storage instruction | For continuous use, store undiluted antibody at 2-8°C for up to a week. For long-term storage, aliquot and store at -20°C or below. Storage in frost free freezers is not recommended. Avoid repeated freeze/thaw cycles. Suggest spin the vial prior to opening. The antibody solution should be gently mixed before use. |

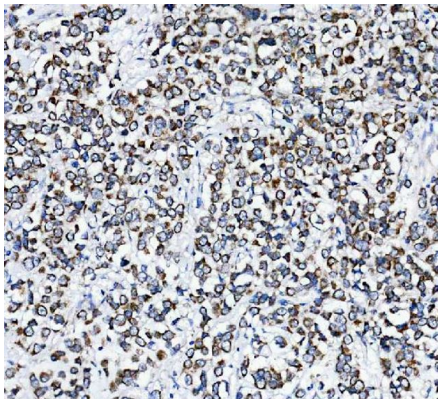
Note

For laboratory research only, not for drug, diagnostic or other use.

Bioinformation

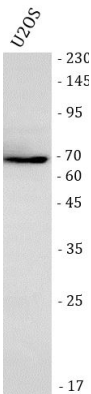
| | |
|-----------------------|---|
| Gene Symbol | PLD5 |
| Gene Full Name | Phospholipase D Family Member 5 |
| Background | Predicted to enable catalytic activity. Predicted to be located in membrane. [provided by Alliance of Genome Resources, Feb 2025] |
| Calculated Mw | 61 kDa |
| PTM | Glycoprotein. [UniProt] |
| Cellular Localization | Membrane. [UniProt] |

Images



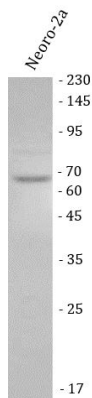
ARG45556 anti-PLD5 antibody IHC-P image

Immunohistochemistry: Human breast cancer stained with ARG45556 anti-PLD5 antibody at 2 µg/ml dilution.



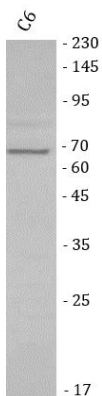
ARG45556 anti-PLD5 antibody WB image

Western blot: U2OS stained with ARG45556 anti-PLD5 antibody at 0.5 µg/ml dilution.



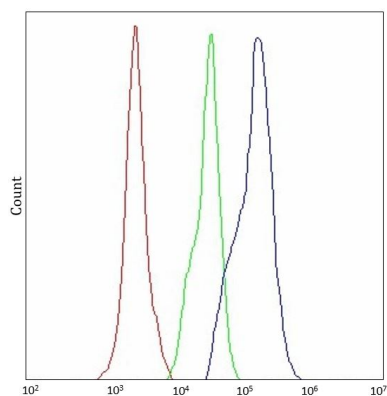
ARG45556 anti-PLD5 antibody WB image

Western blot: Neoro-2a stained with ARG45556 anti-PLD5 antibody at 0.5 $\mu\text{g/ml}$ dilution.



ARG45556 anti-PLD5 antibody WB image

Western blot: C6 stained with ARG45556 anti-PLD5 antibody at 0.5 $\mu\text{g/ml}$ dilution.



ARG45556 anti-PLD5 antibody FACS image

Flow Cytometry: SH-SY5Y stained with ARG45556 anti-PLD5 antibody at 1 $\mu\text{g}/10^6$ cells dilution.



ARG45556 anti-PLD5 antibody IHC-P image

Immunohistochemistry: Rat cerebellum stained with ARG45556 anti-PLD5 antibody at 2 $\mu\text{g/ml}$ dilution.



ARG45556 anti-PLD5 antibody IHC-P image

Immunohistochemistry: Mouse cerebellum stained with ARG45556 anti-PLD5 antibody at 2 µg/ml dilution.