

## ARG45487 anti-PKLR antibody

Package: 50 µg  
Store at: -20°C

### Summary

Product Description	Rabbit Polyclonal antibody recognizes PKLR
Tested Reactivity	Hu, Ms, Rat
Tested Application	IHC-P, WB
Specificity	PKLR
Host	Rabbit
Clonality	Polyclonal
Isotype	IgG
Target Name	PKLR
Species	Human
Immunogen	Synthetic peptide corresponding to C-terminal region of human PKLR.
Conjugation	Un-conjugated
Alternate Names	PKR; PKRL; PK1; Pyruvate kinase isozymes L/R; R-type/L-type pyruvate kinase; Pyruvate kinase PKLR; Pyruvate kinase 1; EC 2.7.1.40; RPK; Red cell/liver pyruvate kinase; PKL

### Application Instructions

Application table	Application	Dilution
	IHC-P	0.5-1 µg/ml
	WB	0.1-0.5 µg/ml
Application Note	* The dilutions indicate recommended starting dilutions and the optimal dilutions or concentrations should be determined by the scientist.	
Observed Size	62 kDa	

### Properties

Form	Powder
Purification	Affinity purified
Buffer	0.9% NaCl, 0.2% Na <sub>2</sub> HPO <sub>4</sub> , 0.05% Sodium azide and 5% BSA.
Preservative	0.05% Sodium azide
Stabilizer	5% BSA
Concentration	0.5 mg/ml
Storage instruction	For continuous use, store undiluted antibody at 2-8°C for up to a week. For long-term storage, aliquot and store at -20°C or below. Storage in frost free freezers is not recommended. Avoid repeated freeze/thaw cycles. Suggest spin the vial prior to opening. The antibody solution should be gently mixed before use.

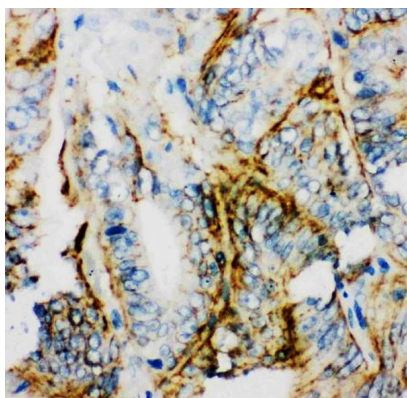
**Note**

For laboratory research only, not for drug, diagnostic or other use.

## Bioinformation

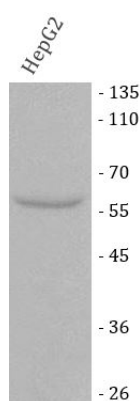
Gene Symbol	PKLR
Gene Full Name	pyruvate kinase, liver and RBC
Background	The protein encoded by this gene is a pyruvate kinase that catalyzes the transphosphorylation of phohsphenolpyruvate into pyruvate and ATP, which is the rate-limiting step of glycolysis. Defects in this enzyme, due to gene mutations or genetic variations, are the common cause of chronic hereditary nonspherocytic hemolytic anemia (CNSHA or HNSHA). Multiple transcript variants encoding different isoforms have been found for this gene. [provided by RefSeq, Jul 2008]
Function	Plays a key role in glycolysis. [UniProt]
Calculated Mw	62 kDa
PTM	Phosphoprotein. [UniProt]
Cellular Localization	Cytoplasm; Cytosol. [UniProt]

## Images



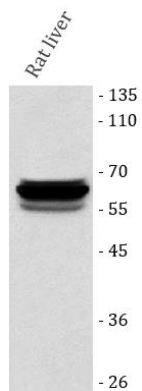
ARG45487 anti-PKLR antibody IHC-P image

Immunohistochemistry: Human intestinal cancer stained with ARG45487 anti-PKLR antibody at 1 µg/ml dilution.



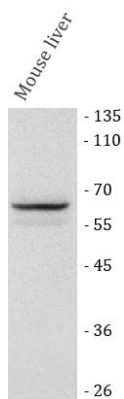
ARG45487 anti-PKLR antibody WB image

Western blot: HepG2 stained with ARG45487 anti-PKLR antibody at 0.5 µg/ml dilution.



#### ARG45487 anti-PKLR antibody WB image

Western blot: Rat liver stained with ARG45487 anti-PKLR antibody at 0.5 µg/ml dilution.



#### ARG45487 anti-PKLR antibody WB image

Western blot: Mouse liver stained with ARG45487 anti-PKLR antibody at 0.5 µg/ml dilution.