

ARG45483 anti-LSM2 antibody

Package: 50 µg
Store at: -20°C

Summary

Product Description	Rabbit Polyclonal antibody recognizes LSM2
Tested Reactivity	Hu, Ms, Rat, Mk
Tested Application	FACS, ICC/IF, IHC-P, WB
Host	Rabbit
Clonality	Polyclonal
Isotype	IgG
Target Name	LSM2
Species	Human
Immunogen	Synthetic peptide corresponding to C-terminal region of human LSM2.
Conjugation	Un-conjugated
Alternate Names	U6 snRNA-associated Sm-like protein LSm2; YBL026W; G7B; snRNP core Sm-like protein Sm-x5; snRNP; Small nuclear ribonuclear protein D homolog; Protein G7b; C6orf28

Application Instructions

Application table	Application	Dilution
	FACS	1 - 3 µg/10 ⁶ cells
	ICC/IF	5 µg/ml
	IHC-P	1-2 µg/ml
	WB	0.1-0.25 µg/ml
Application Note	* The dilutions indicate recommended starting dilutions and the optimal dilutions or concentrations should be determined by the scientist.	
Observed Size	11 kDa	

Properties

Form	Liquid
Purification	Affinity purified
Buffer	0.9% NaCl, 0.2% Na ₂ HPO ₄ , 0.01% Sodium azide and 4% Trehalose.
Preservative	0.01% Sodium azide
Stabilizer	4% Trehalose
Concentration	0.5 mg/ml
Storage instruction	For continuous use, store undiluted antibody at 2-8°C for up to a week. For long-term storage, aliquot and store at -20°C or below. Storage in frost free freezers is not recommended. Avoid repeated

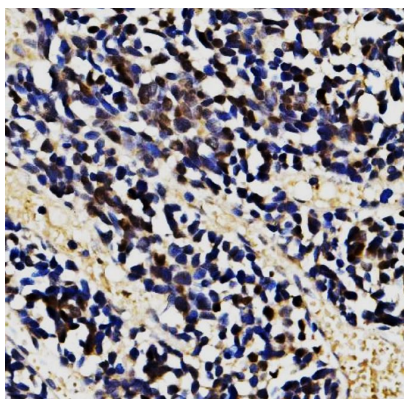
freeze/thaw cycles. Suggest spin the vial prior to opening. The antibody solution should be gently mixed before use.

Note For laboratory research only, not for drug, diagnostic or other use.

Bioinformation

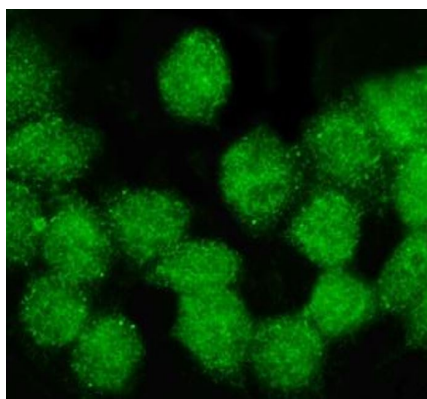
Gene Symbol	LSM2
Gene Full Name	LSM2 homolog, U6 small nuclear RNA and mRNA degradation associated
Background	This gene encodes a member of the LSm family of RNA-binding proteins. LSm proteins form stable heteromers that bind specifically to the 3'-terminal oligo(U) tract of U6 snRNA and may play a role in pre-mRNA splicing by mediating U4/U6 snRNP formation. Pseudogenes of this gene are located on the short arm of chromosomes 6 and 19. [provided by RefSeq, Nov 2011]
Function	Binds specifically to the 3'-terminal U-tract of U6 snRNA. May be involved in pre-mRNA splicing. [UniProt]
Calculated Mw	11 kDa
PTM	Phosphoprotein. [UniProt]
Cellular Localization	Nucleus; Spliceosome. [UniProt]

Images



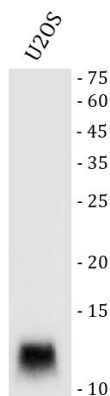
ARG45483 anti-LSM2 antibody IHC-P image

Immunohistochemistry: Human lung cancer stained with ARG45483 anti-LSM2 antibody at 2 µg/ml dilution.



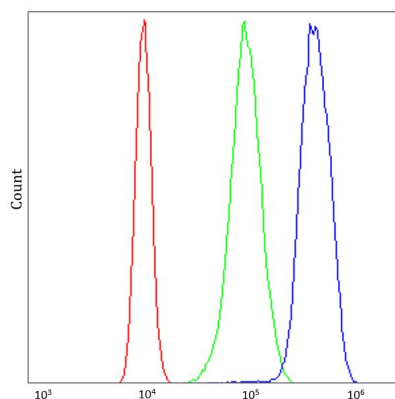
ARG45483 anti-LSM2 antibody ICC/IF image

Immunofluorescence: MCF-7 stained with ARG45483 anti-LSM2 antibody at 5 µg/ml dilution.



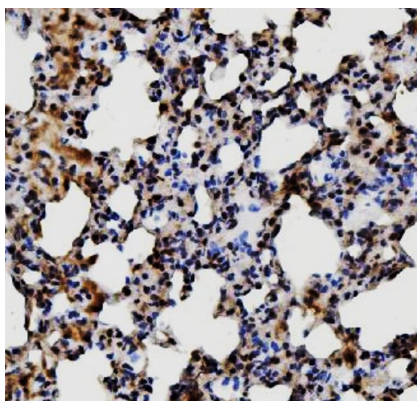
ARG45483 anti-LSM2 antibody WB image

Western blot: U2OS stained with ARG45483 anti-LSM2 antibody at 0.5 µg/ml dilution.



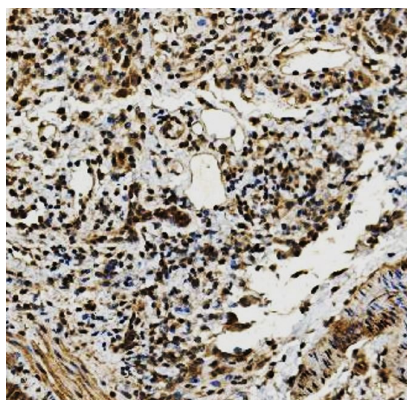
ARG45483 anti-LSM2 antibody FACS image

Flow Cytometry: K562 stained with ARG45483 anti-LSM2 antibody at 1 µg/10⁶ cells dilution.



ARG45483 anti-LSM2 antibody IHC-P image

Immunohistochemistry: Rat lung stained with ARG45483 anti-LSM2 antibody at 2 µg/ml dilution.



ARG45483 anti-LSM2 antibody IHC-P image

Immunohistochemistry: Mouse lung stained with ARG45483 anti-LSM2 antibody at 2 µg/ml dilution.