

ARG45464 anti-POC1A antibody

Package: 50 µg
Store at: -20°C

Summary

Product Description	Rabbit Polyclonal antibody recognizes POC1A
Tested Reactivity	Hu, Ms, Rat
Tested Application	FACS, ICC/IF, IHC-P, WB
Specificity	POC1A
Host	Rabbit
Clonality	Polyclonal
Isotype	IgG
Target Name	POC1A
Species	Human
Immunogen	Recombinant protein containing to human POC1A.
Conjugation	Un-conjugated
Alternate Names	POC1A; POC1 Centriolar Protein A; WDR51A; POC1 Centriolar Protein Homolog A; WD Repeat-Containing Protein 51A; Proteome Of Centriole Protein 1A; WD Repeat Domain 51A; DKFZP434C245; POC1 Centriolar Protein Homolog A (Chlamydomonas); PIX2; SOFT; Pix2

Application Instructions

Application table	Application	Dilution
	FACS	1 - 3 µg/10 ⁶ cells
	ICC/IF	5 µg/ml
	IHC-P	2-5 µg/ml
	WB	0.25-0.5 µg/ml
Application Note	* The dilutions indicate recommended starting dilutions and the optimal dilutions or concentrations should be determined by the scientist.	
Observed Size	40 kDa	

Properties

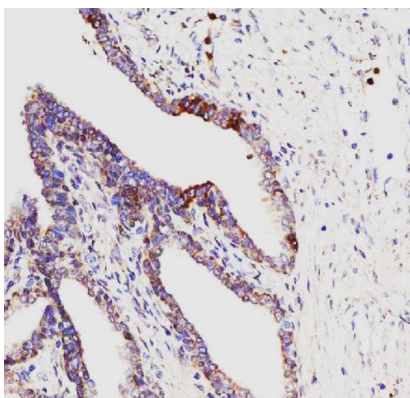
Form	Powder
Purification	Affinity purified
Buffer	0.2% Na ₂ HPO ₄ , 0.9% NaCl and 4% Trehalose.
Stabilizer	4% Trehalose
Concentration	0.5 mg/ml

Storage instruction	For continuous use, store undiluted antibody at 2-8°C for up to a week. For long-term storage, aliquot and store at -20°C or below. Storage in frost free freezers is not recommended. Avoid repeated freeze/thaw cycles. Suggest spin the vial prior to opening. The antibody solution should be gently mixed before use.
Note	For laboratory research only, not for drug, diagnostic or other use.

Bioinformation

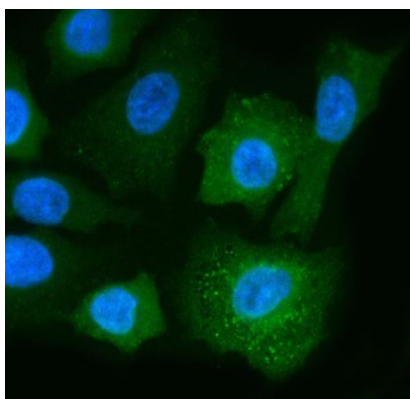
Gene Symbol	POC1A
Gene Full Name	POC1 Centriolar Protein A
Background	POC1 proteins contain an N-terminal WD40 domain and a C-terminal coiled coil domain and are part of centrosomes. They play an important role in basal body and cilia formation. This gene encodes one of the two POC1 proteins found in humans. Mutations in this gene result in short stature, onychodysplasia, facial dysmorphism, and hypotrichosis (SOFT) syndrome. [provided by RefSeq, Sep 2012]
Function	Plays an important role in centriole assembly and/or stability and ciliogenesis. Involved in early steps of centriole duplication, as well as in the later steps of centriole length control. Acts in concert with POC1B to ensure centriole integrity and proper mitotic spindle formation. [UniProt]
Calculated Mw	45 kDa
Cellular Localization	Cell projection; Cytoplasm; Cytoskeleton. [UniProt]

Images



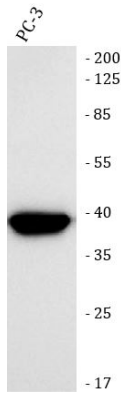
ARG45464 anti-POC1A antibody IHC-P image

Immunohistochemistry: Human prostate cancer stained with ARG45464 anti-POC1A antibody at 2 µg/ml dilution.



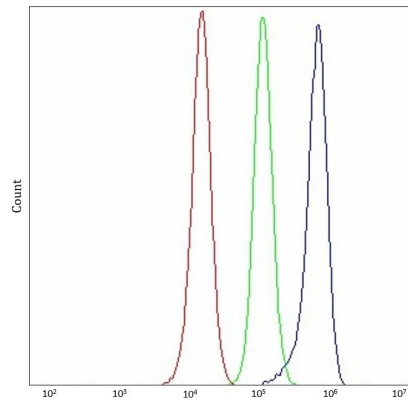
ARG45464 anti-POC1A antibody ICC/IF image

Immunofluorescence: A549 stained with ARG45464 anti-POC1A antibody at 5 µg/ml dilution.



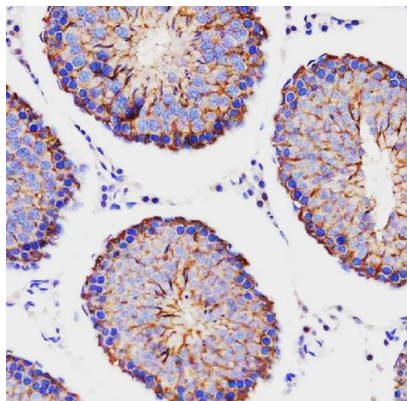
ARG45464 anti-POC1A antibody WB image

Western blot: PC-3 stained with ARG45464 anti-POC1A antibody at 0.5 $\mu\text{g/ml}$ dilution.



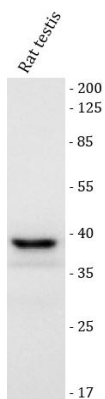
ARG45464 anti-POC1A antibody FACS image

Flow Cytometry: PC-3 stained with ARG45464 anti-POC1A antibody at 1 $\mu\text{g}/10^6$ cells dilution.



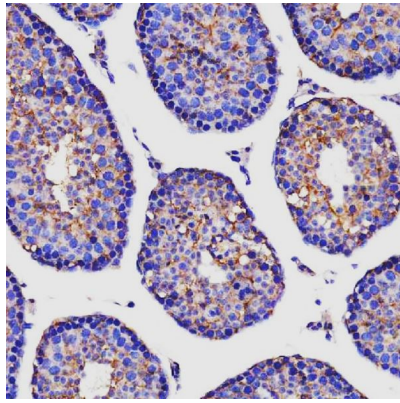
ARG45464 anti-POC1A antibody IHC-P image

Immunohistochemistry: Rat testis stained with ARG45464 anti-POC1A antibody at 2 $\mu\text{g/ml}$ dilution.



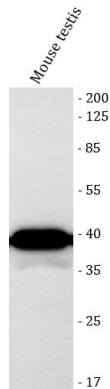
ARG45464 anti-POC1A antibody WB image

Western blot: Rat testis stained with ARG45464 anti-POC1A antibody at 0.5 $\mu\text{g/ml}$ dilution.



ARG45464 anti-POC1A antibody IHC-P image

Immunohistochemistry: Mouse testis stained with ARG45464 anti-POC1A antibody at 2 µg/ml dilution.



ARG45464 anti-POC1A antibody WB image

Western blot: Mouse testis stained with ARG45464 anti-POC1A antibody at 0.5 µg/ml dilution.