

ARG45454 anti-SEPHS1 antibody

Package: 50 µg
Store at: -20°C

Summary

Product Description	Rabbit Polyclonal antibody recognizes SEPHS1
Tested Reactivity	Hu, Ms, Rat
Tested Application	IHC-P, WB
Host	Rabbit
Clonality	Polyclonal
Isotype	IgG
Target Name	SEPHS1
Species	Human
Immunogen	Synthetic peptide corresponding to middle region of human SEPHS1.
Conjugation	Un-conjugated
Alternate Names	SEPHS1; Selenophosphate Synthetase 1; SPS1; SPS; Selenide, Water Dikinase 1; Selenophosphate Synthase 1; Selenium Donor Protein 1; EC 2.7.9.3 47; SELD; Selenophosphate Synthetase 1 Delta E2; Selenophosphate Synthetase 1 Delta E8; Selenophosphate Synthetase 1 Major; Selenophosphate Synthetase 1 +E9a; Selenophosphate Synthetase 1 +E9; Selenide, Water Dikinase

Application Instructions

Application table	Application	Dilution
	IHC-P	2-5 µg/ml
	WB	0.25-0.5 µg/ml
Application Note	* The dilutions indicate recommended starting dilutions and the optimal dilutions or concentrations should be determined by the scientist.	
Observed Size	50 kDa	

Properties

Form	Powder
Purification	Affinity purified
Buffer	0.2% Na ₂ HPO ₄ , 0.9% NaCl and 4% Trehalose.
Stabilizer	4% Trehalose
Concentration	0.5 mg/ml
Storage instruction	For continuous use, store undiluted antibody at 2-8°C for up to a week. For long-term storage, aliquot and store at -20°C or below. Storage in frost free freezers is not recommended. Avoid repeated freeze/thaw cycles. Suggest spin the vial prior to opening. The antibody solution should be gently mixed before use.

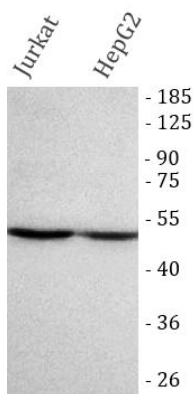
Note

For laboratory research only, not for drug, diagnostic or other use.

Bioinformation

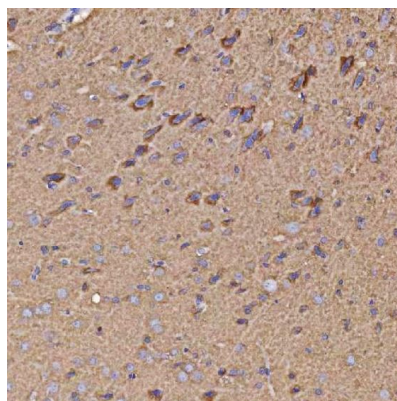
Gene Symbol	SEPHS1
Gene Full Name	Selenophosphate Synthetase 1
Background	This gene encodes an enzyme that synthesizes selenophosphate from selenide and ATP. Selenophosphate is the selenium donor used to synthesize selenocysteine, which is co-translationally incorporated into selenoproteins at in-frame UGA codons. [provided by RefSeq, Sep 2010]
Function	Synthesizes selenophosphate from selenide and ATP. [UniProt]
Calculated Mw	43 kDa
PTM	Acetylation. [UniProt]
Cellular Localization	Cell membrane; Cytoplasm; Membrane; Nucleus. [UniProt]

Images



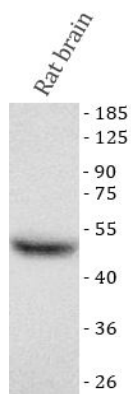
ARG45454 anti-SEPHS1 antibody WB image

Western blot: Jurkat and HepG2 stained with ARG45454 anti-SEPHS1 antibody at 0.5 µg/ml dilution.



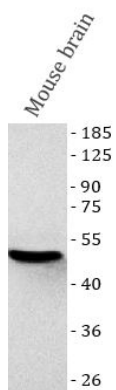
ARG45454 anti-SEPHS1 antibody IHC-P image

Immunohistochemistry: Rat brain stained with ARG45454 anti-SEPHS1 antibody at 2 µg/ml dilution.



ARG45454 anti-SEPHS1 antibody WB image

Western blot: Rat brain stained with ARG45454 anti-SEPHS1 antibody at 0.5 µg/ml dilution.



ARG45454 anti-SEPHS1 antibody WB image

Western blot: Mouse brain stained with ARG45454 anti-SEPHS1 antibody at 0.5 µg/ml dilution.