

ARG45439 anti-NUP210 antibody

Package: 50 µg
Store at: -20°C

Summary

Product Description	Rabbit Polyclonal antibody recognizes NUP210
Tested Reactivity	Hu, Rat
Tested Application	FACS, ICC/IF, IHC-P, WB
Host	Rabbit
Clonality	Polyclonal
Isotype	IgG
Target Name	NUP210
Species	Human
Immunogen	Recombinant protein containing to human NUP210.
Conjugation	Un-conjugated
Alternate Names	NUP210; Nucleoporin 210; POM210; KIAA0906; GP210; Nuclear Envelope Pore Membrane Protein POM 210; Nuclear Pore Membrane Glycoprotein 210; Pore Membrane Protein Of 210 KDa; Nuclear Pore Protein Gp210; Nucleoporin 210kDa; Nucleoporin Nup210; FLJ22389

Application Instructions

Application table	Application	Dilution
	FACS	1 - 3 µg/10 ⁶ cells
	ICC/IF	5 µg/ml
	IHC-P	2-5 µg/ml
	WB	0.1-0.25 µg/ml
Application Note	* The dilutions indicate recommended starting dilutions and the optimal dilutions or concentrations should be determined by the scientist.	
Observed Size	250 kDa	

Properties

Form	Powder
Purification	Affinity purified
Buffer	0.2% Na ₂ HPO ₄ , 0.9% NaCl and 4% Trehalose.
Stabilizer	4% Trehalose
Concentration	0.5 mg/ml
Storage instruction	For continuous use, store undiluted antibody at 2-8°C for up to a week. For long-term storage, aliquot and store at -20°C or below. Storage in frost free freezers is not recommended. Avoid repeated freeze/thaw cycles. Suggest spin the vial prior to opening. The antibody solution should be gently mixed

before use.

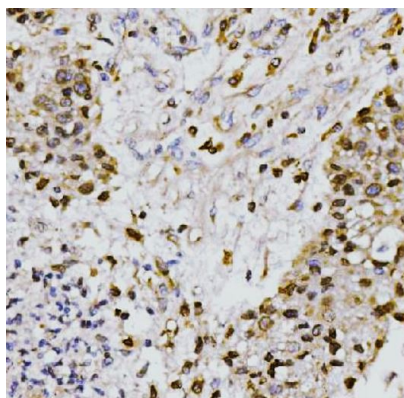
Note

For laboratory research only, not for drug, diagnostic or other use.

Bioinformation

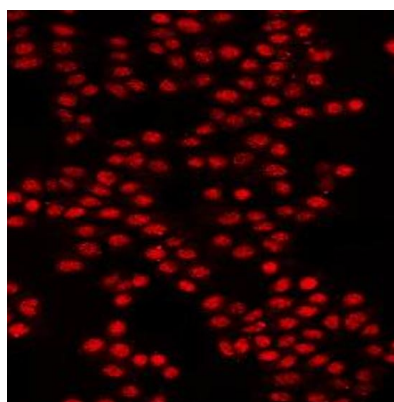
Gene Symbol	NUP210
Gene Full Name	Nucleoporin 210
Background	The nuclear pore complex is a massive structure that extends across the nuclear envelope, forming a gateway that regulates the flow of macromolecules between the nucleus and the cytoplasm. Nucleoporins are the main components of the nuclear pore complex in eukaryotic cells. The protein encoded by this gene is a membrane-spanning glycoprotein that is a major component of the nuclear pore complex. Multiple pseudogenes related to this gene are located on chromosome 3. [provided by RefSeq, Jul 2013]
Function	Nucleoporin essential for nuclear pore assembly and fusion, nuclear pore spacing, as well as structural integrity. [UniProt]
Calculated Mw	205 kDa
PTM	Glycoprotein; Phosphoprotein. [UniProt]
Cellular Localization	Endoplasmic reticulum; Membrane; Nuclear pore complex; Nucleus. [UniProt]

Images



ARG45439 anti-NUP210 antibody IHC-P image

Immunohistochemistry: Human liver stained with ARG45439 anti-NUP210 antibody at 2 µg/ml dilution.



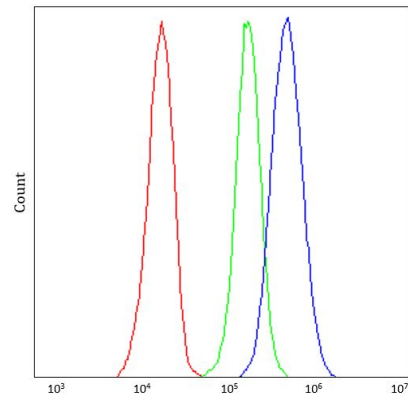
ARG45439 anti-NUP210 antibody ICC/IF image

Immunofluorescence: MCF-7 stained with ARG45439 anti-NUP210 antibody at 5 µg/ml dilution.



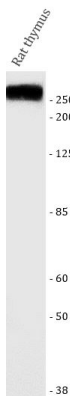
ARG45439 anti-NUP210 antibody WB image

Western blot: MCF-7 stained with ARG45439 anti-NUP210 antibody at 0.25 $\mu\text{g}/\text{ml}$ dilution.



ARG45439 anti-NUP210 antibody FACS image

Flow Cytometry: JK stained with ARG45439 anti-NUP210 antibody at 1 $\mu\text{g}/10^6$ cells dilution.



ARG45439 anti-NUP210 antibody WB image

Western blot: Rat thymus stained with ARG45439 anti-NUP210 antibody at 0.25 $\mu\text{g}/\text{ml}$ dilution.