

ARG45430 anti-TRAP alpha / TRAPA antibody

Package: 50 µg
Store at: -20°C

Summary

Product Description	Rabbit Polyclonal antibody recognizes TRAP alpha / TRAPA
Tested Reactivity	Hu, Ms, Rat, Mk
Tested Application	FACS, ICC/IF, IHC-P, WB
Host	Rabbit
Clonality	Polyclonal
Isotype	IgG
Target Name	TRAP alpha / TRAPA
Species	Human
Immunogen	Recombinant protein containing to human TRAP alpha/TRAPA.
Conjugation	Un-conjugated
Alternate Names	SSR1; Signal Sequence Receptor Subunit 1; TRAPA; Translocon-Associated Protein Subunit Alpha; Signal Sequence Receptor Subunit Alpha; Signal Sequence Receptor, Alpha; SSR-Alpha; Translocon-Associated Protein Alpha Subunit; Translocon-Associated Protein Alpha; SSR Alpha Subunit; TRAP Alpha; TRAP-Alpha

Application Instructions

Application table	Application	Dilution
	FACS	1 - 3 µg/10 ⁶ cells
	ICC/IF	5 µg/ml
	IHC-P	2-5 µg/ml
	WB	0.1-0.25 µg/ml
Application Note	* The dilutions indicate recommended starting dilutions and the optimal dilutions or concentrations should be determined by the scientist.	
Observed Size	36 kDa	

Properties

Form	Liquid
Purification	Affinity purified
Buffer	0.2% Na ₂ HPO ₄ , 0.9% NaCl and 4% Trehalose.
Stabilizer	4% Trehalose
Concentration	0.5 mg/ml
Storage instruction	For continuous use, store undiluted antibody at 2-8°C for up to a week. For long-term storage, aliquot and store at -20°C or below. Storage in frost free freezers is not recommended. Avoid repeated

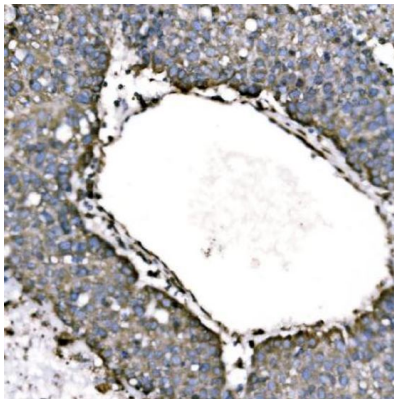
freeze/thaw cycles. Suggest spin the vial prior to opening. The antibody solution should be gently mixed before use.

Note For laboratory research only, not for drug, diagnostic or other use.

Bioinformation

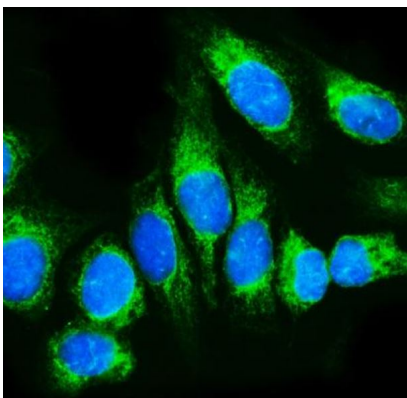
Gene Symbol	SSR1
Gene Full Name	Signal Sequence Receptor Subunit 1
Background	The signal sequence receptor (SSR) is a glycosylated endoplasmic reticulum (ER) membrane receptor associated with protein translocation across the ER membrane. The SSR consists of 2 subunits, a 34-kD glycoprotein encoded by this gene and a 22-kD glycoprotein. This gene generates several mRNA species as a result of complex alternative polyadenylation. This gene is unusual in that it utilizes arrays of polyA signal sequences that are mostly non-canonical. Multiple transcript variants encoding different isoforms have been found for this gene. [provided by RefSeq, May 2014]
Function	TRAP proteins are part of a complex whose function is to bind calcium to the ER membrane and thereby regulate the retention of ER resident proteins. May be involved in the recycling of the translocation apparatus after completion of the translocation process or may function as a membrane-bound chaperone facilitating folding of translocated proteins. [UniProt]
Calculated Mw	32 kDa
PTM	Glycoprotein; Phosphoprotein. [UniProt]
Cellular Localization	Endoplasmic reticulum; Membrane. [UniProt]

Images



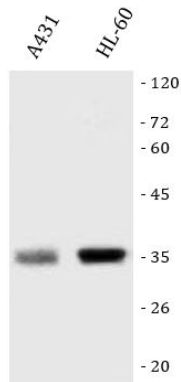
ARG45430 anti-TRAP alpha / TRAPA antibody IHC-P image

Immunohistochemistry: Human liver cancer stained with ARG45430 anti-TRAP alpha / TRAPA antibody at 2 µg/ml dilution.



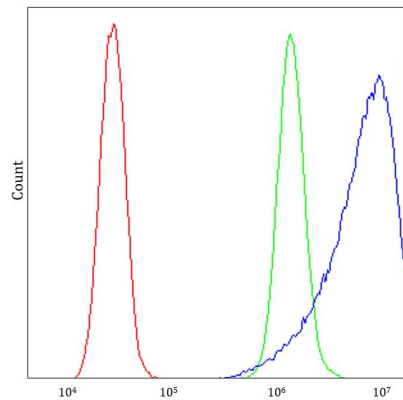
ARG45430 anti-TRAP alpha / TRAPA antibody ICC/IF image

Immunofluorescence: U2OS stained with ARG45430 anti-TRAP alpha / TRAPA antibody at 5 µg/ml dilution.



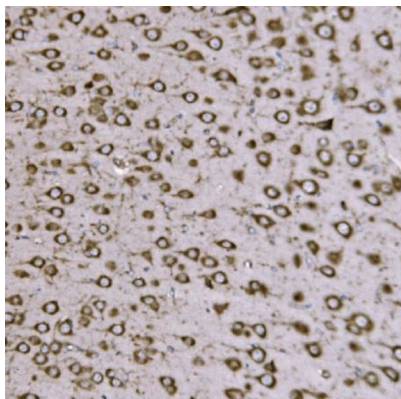
ARG45430 anti-TRAP alpha / TRAPA antibody WB image

Western blot: A431 and HL-60 stained with ARG45430 anti-TRAP alpha / TRAPA antibody at 0.5 µg/ml dilution.



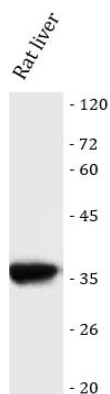
ARG45430 anti-TRAP alpha / TRAPA antibody FACS image

Flow Cytometry: K562 stained with ARG45430 anti-TRAP alpha / TRAPA antibody at 1 µg/10⁶ cells dilution.



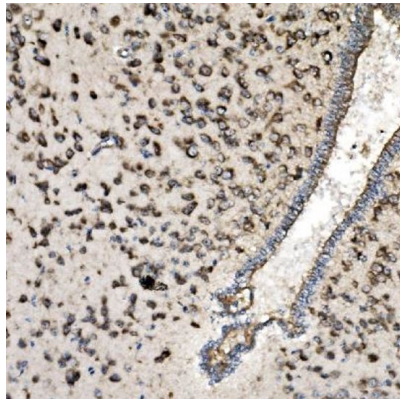
ARG45430 anti-TRAP alpha / TRAPA antibody IHC-P image

Immunohistochemistry: Rat brain stained with ARG45430 anti-TRAP alpha / TRAPA antibody at 2 µg/ml dilution.



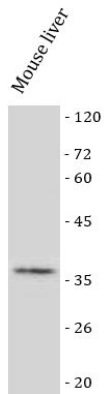
ARG45430 anti-TRAP alpha / TRAPA antibody WB image

Western blot: Rat liver stained with ARG45430 anti-TRAP alpha / TRAPA antibody at 0.5 µg/ml dilution.



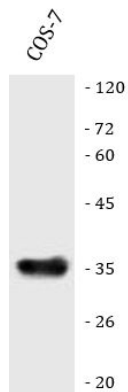
ARG45430 anti-TRAP alpha / TRAPA antibody IHC-P image

Immunohistochemistry: Mouse brain stained with ARG45430 anti-TRAP alpha / TRAPA antibody at 2 µg/ml dilution.



ARG45430 anti-TRAP alpha / TRAPA antibody WB image

Western blot: Mouse liver stained with ARG45430 anti-TRAP alpha / TRAPA antibody at 0.5 µg/ml dilution.



ARG45430 anti-TRAP alpha / TRAPA antibody WB image

Western blot: COS-7 stained with ARG45430 anti-TRAP alpha / TRAPA antibody at 0.5 µg/ml dilution.