

ARG45426 anti-Phospholipase D2 antibody

Package: 50 µg
Store at: -20°C

Summary

Product Description	Rabbit Polyclonal antibody recognizes Phospholipase D2
Tested Reactivity	Hu, Ms, Rat
Tested Application	FACS, ICC/IF, WB
Host	Rabbit
Clonality	Polyclonal
Isotype	IgG
Target Name	Phospholipase D2
Species	Human
Immunogen	Recombinant protein containing to human Phospholipase D2.
Conjugation	Un-conjugated
Alternate Names	PLD2; Choline phosphatase 2; PLD1C; PLD 2; Phosphatidylcholine-hydrolyzing phospholipase D2; Phospholipase D2; EC 3.1.4.4; hPLD2

Application Instructions

Application table	Application	Dilution
	FACS	1 - 3 µg/10 ⁶ cells
	ICC/IF	2 µg/ml
	WB	0.25-0.5 µg/ml
Application Note	* The dilutions indicate recommended starting dilutions and the optimal dilutions or concentrations should be determined by the scientist.	
Observed Size	106 kDa	

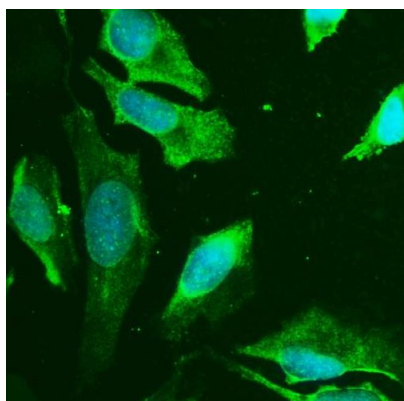
Properties

Form	Powder
Purification	Affinity purified
Buffer	0.2% Na ₂ HPO ₄ , 0.9% NaCl, 0.05% Sodium azide and 4% Trehalose.
Preservative	0.05% Sodium azide
Stabilizer	4% Trehalose
Concentration	0.5 mg/ml
Storage instruction	For continuous use, store undiluted antibody at 2-8°C for up to a week. For long-term storage, aliquot and store at -20°C or below. Storage in frost free freezers is not recommended. Avoid repeated freeze/thaw cycles. Suggest spin the vial prior to opening. The antibody solution should be gently mixed before use.

Bioinformation

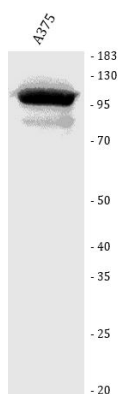
Gene Symbol	PLD2
Gene Full Name	phospholipase D2
Background	The protein encoded by this gene catalyzes the hydrolysis of phosphatidylcholine to phosphatidic acid and choline. The activity of the encoded enzyme is enhanced by phosphatidylinositol 4,5-bisphosphate and ADP-ribosylation factor-1. This protein localizes to the peripheral membrane and may be involved in cytoskeletal organization, cell cycle control, transcriptional regulation, and/or regulated secretion. Two transcript variants encoding different isoforms have been found for this gene.[provided by RefSeq, Jul 2011]
Function	May have a role in signal-induced cytoskeletal regulation and/or endocytosis. [UniProt]. [UniProt]
Calculated Mw	106 kDa
PTM	Phosphorylated by FGR. [UniProt]. [UniProt]
Cellular Localization	Membrane; Peripheral membrane protein. [UniProt]. [UniProt]

Images



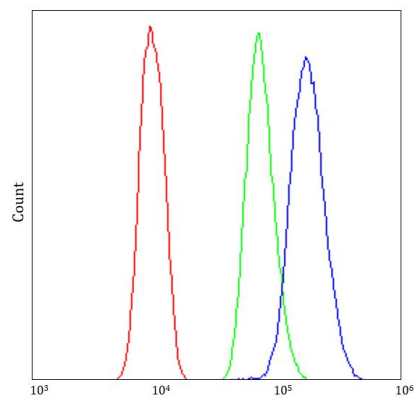
ARG45426 anti-Phospholipase D2 antibody ICC/IF image

Immunofluorescence: HeLa stained with ARG45426 anti-Phospholipase D2 antibody at 2 µg/ml dilution.



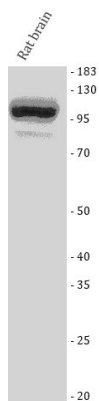
ARG45426 anti-Phospholipase D2 antibody WB image

Western blot: A375 stained with ARG45426 anti-Phospholipase D2 antibody at 0.5 µg/ml dilution.



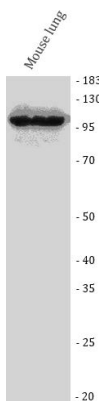
ARG45426 anti-Phospholipase D2 antibody FACS image

Flow Cytometry: U937 stained with ARG45426 anti-Phospholipase D2 antibody at 1 µg/10⁶ cells dilution.



ARG45426 anti-Phospholipase D2 antibody WB image

Western blot: Rat brain stained with ARG45426 anti-Phospholipase D2 antibody at 0.5 µg/ml dilution.



ARG45426 anti-Phospholipase D2 antibody WB image

Western blot: Mouse lung stained with ARG45426 anti-Phospholipase D2 antibody at 0.5 µg/ml dilution.