

ARG45420 anti-Kif2a antibody

Package: 50 µg
Store at: -20°C

Summary

Product Description	Rabbit Polyclonal antibody recognizes Kif2a
Tested Reactivity	Hu, Ms, Rat, Mk
Tested Application	FACS, ICC/IF, IHC-P, WB
Host	Rabbit
Clonality	Polyclonal
Isotype	IgG
Target Name	Kif2a
Species	Human
Immunogen	Recombinant protein containing to human Kif2a.
Conjugation	Un-conjugated
Alternate Names	KIF2A; Kinesin Family Member 2A; HK2; KIF2; Kinesin-Like Protein KIF2A; Kinesin-2; Kinesin Heavy Chain Member 2A; Kinesin Heavy Chain Member 2; Kinesin, Heavy Chain, 2; CDCBM3; KNS2

Application Instructions

Application table	Application	Dilution
	FACS	1 - 3 µg/10 ⁶ cells
	ICC/IF	5 µg/ml
	IHC-P	2-5 µg/ml
	WB	0.1-0.25 µg/ml
Application Note	* The dilutions indicate recommended starting dilutions and the optimal dilutions or concentrations should be determined by the scientist.	
Observed Size	110 kDa	

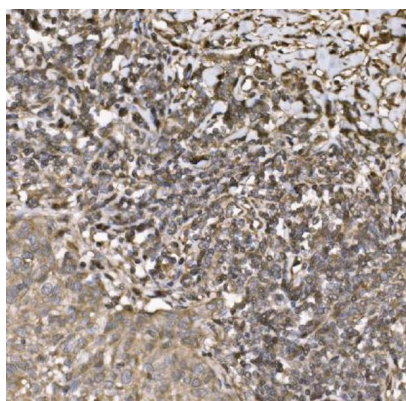
Properties

Form	Powder
Purification	Affinity purified
Buffer	0.2% Na ₂ HPO ₄ , 0.9% NaCl and 4% Trehalose.
Stabilizer	4% Trehalose
Concentration	0.5 mg/ml
Storage instruction	For continuous use, store undiluted antibody at 2-8°C for up to a week. For long-term storage, aliquot and store at -20°C or below. Storage in frost free freezers is not recommended. Avoid repeated freeze/thaw cycles. Suggest spin the vial prior to opening. The antibody solution should be gently mixed before use.

Bioinformation

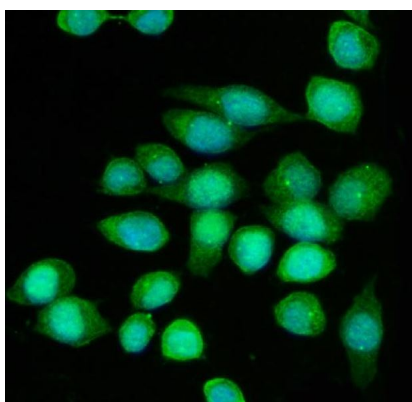
Gene Symbol	KIF2A
Gene Full Name	Kinesin Family Member 2A
Background	The protein encoded by this gene is a plus end-directed motor required for normal mitotic progression. The encoded protein is required for normal spindle activity during mitosis and is necessary for normal brain development. Several transcript variants encoding different isoforms have been found for this gene. [provided by RefSeq, Sep 2011]
Function	Plus end-directed microtubule-dependent motor required for normal brain development. May regulate microtubule dynamics during axonal growth. Required for normal progression through mitosis. Required for normal congress of chromosomes at the metaphase plate. Required for normal spindle dynamics during mitosis. Promotes spindle turnover. Implicated in formation of bipolar mitotic spindles. Has microtubule depolymerization activity. [UniProt]
Calculated Mw	80 kDa
PTM	Acetylation; Phosphoprotein. [UniProt]
Cellular Localization	Cytoplasm; Cytoskeleton; Microtubule. [UniProt]

Images



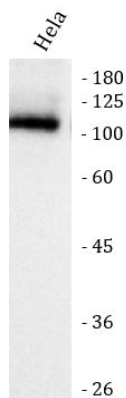
ARG45420 anti-Kif2a antibody IHC-P image

Immunohistochemistry: Human lung cancer stained with ARG45420 anti-Kif2a antibody at 2 µg/ml dilution.



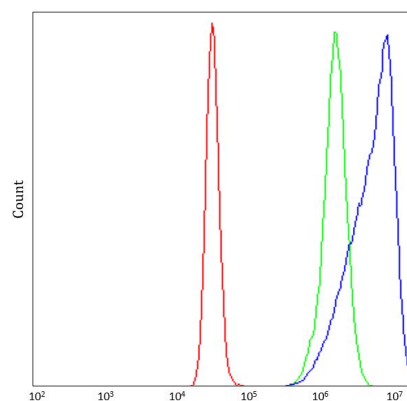
ARG45420 anti-Kif2a antibody ICC/IF image

Immunofluorescence: SiHa stained with ARG45420 anti-Kif2a antibody at 5 µg/ml dilution.



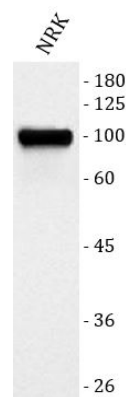
ARG45420 anti-Kif2a antibody WB image

Western blot: HeLa stained with ARG45420 anti-Kif2a antibody at 0.5 $\mu\text{g/ml}$ dilution.



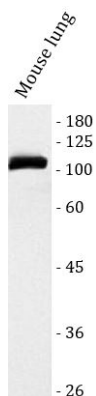
ARG45420 anti-Kif2a antibody FACS image

Flow Cytometry: K562 stained with ARG45420 anti-Kif2a antibody at 1 $\mu\text{g}/10^6$ cells dilution.



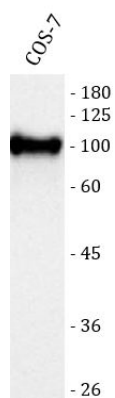
ARG45420 anti-Kif2a antibody WB image

Western blot: NRK stained with ARG45420 anti-Kif2a antibody at 0.5 $\mu\text{g/ml}$ dilution.



ARG45420 anti-Kif2a antibody WB image

Western blot: Mouse lung stained with ARG45420 anti-Kif2a antibody at 0.5 $\mu\text{g/ml}$ dilution.



ARG45420 anti-Kif2a antibody WB image

Western blot: COS-7 stained with ARG45420 anti-Kif2a antibody at 0.5 µg/ml dilution.