

## ARG45415 anti-PTRF antibody

Package: 50 µg  
Store at: -20°C

### Summary

Product Description	Rabbit Polyclonal antibody recognizes PTRF
Tested Reactivity	Hu, Ms, Rat
Tested Application	FACS, ICC/IF, IHC-P, WB
Host	Rabbit
Clonality	Polyclonal
Isotype	IgG
Target Name	PTRF
Species	Human
Immunogen	Recombinant protein containing to human PTRF.
Conjugation	Un-conjugated
Alternate Names	CAVIN1; Caveolae Associated Protein 1; Cavin-1; Polymerase I And Transcript Release Factor; CGL4; PTRF; Congenital Generalized Lipodystrophy 4; Caveolae-Associated Protein 1; RNA Polymerase I And Transcript Release Factor; TTF-I Interacting Peptide 12; FKSG13; CAVIN

### Application Instructions

Application table	Application	Dilution
	FACS	1 - 3 µg/10 <sup>6</sup> cells
	ICC/IF	5 µg/ml
	IHC-P	1-2 µg/ml
	WB	0.1-0.25 µg/ml
Application Note	* The dilutions indicate recommended starting dilutions and the optimal dilutions or concentrations should be determined by the scientist.	
Observed Size	50-55 kDa	

### Properties

Form	Powder
Purification	Affinity purified
Buffer	0.2% Na <sub>2</sub> HPO <sub>4</sub> , 0.9% NaCl and 4% Trehalose.
Stabilizer	4% Trehalose
Concentration	0.5 mg/ml
Storage instruction	For continuous use, store undiluted antibody at 2-8°C for up to a week. For long-term storage, aliquot and store at -20°C or below. Storage in frost free freezers is not recommended. Avoid repeated freeze/thaw cycles. Suggest spin the vial prior to opening. The antibody solution should be gently mixed

before use.

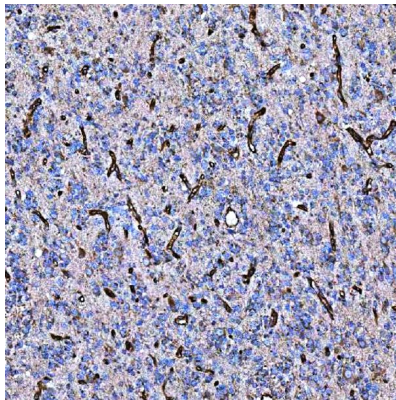
Note

For laboratory research only, not for drug, diagnostic or other use.

## Bioinformation

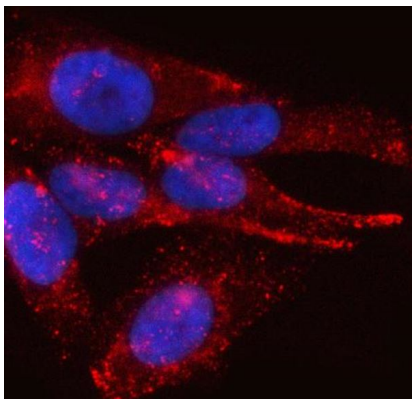
Gene Symbol	CAVIN1
Gene Full Name	Caveolae Associated Protein 1
Background	This gene encodes a protein that enables the dissociation of paused ternary polymerase I transcription complexes from the 3' end of pre-rRNA transcripts. This protein regulates rRNA transcription by promoting the dissociation of transcription complexes and the reinitiation of polymerase I on nascent rRNA transcripts. This protein also localizes to caveolae at the plasma membrane and is thought to play a critical role in the formation of caveolae and the stabilization of caveolins. This protein translocates from caveolae to the cytoplasm after insulin stimulation. Caveolae contain truncated forms of this protein and may be the site of phosphorylation-dependent proteolysis. This protein is also thought to modify lipid metabolism and insulin-regulated gene expression. Mutations in this gene result in a disorder characterized by generalized lipodystrophy and muscular dystrophy. [provided by RefSeq, Nov 2009]
Function	Plays an important role in caveolae formation and organization. Essential for the formation of caveolae in all tissues. [UniProt]
Calculated Mw	43 kDa
PTM	Acetylation; Isopeptide bond; Phosphoprotein; Ubl conjugation. [UniProt]
Cellular Localization	Cell membrane; Cytoplasm; Endoplasmic reticulum; Membrane; Microsome. [UniProt]

## Images



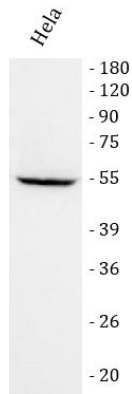
ARG45415 anti-PTRF antibody IHC-P image

Immunohistochemistry: Human glioblastoma stained with ARG45415 anti-PTRF antibody at 2 µg/ml dilution.



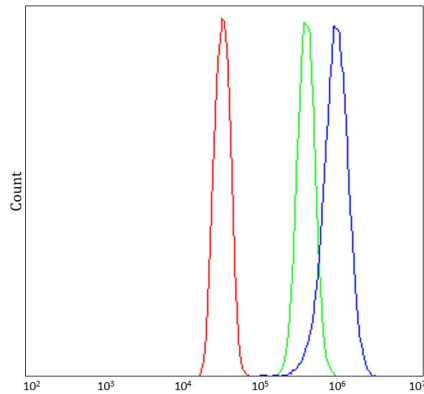
ARG45415 anti-PTRF antibody ICC/IF image

Immunofluorescence: HeLa stained with ARG45415 anti-PTRF antibody at 5 µg/ml dilution.



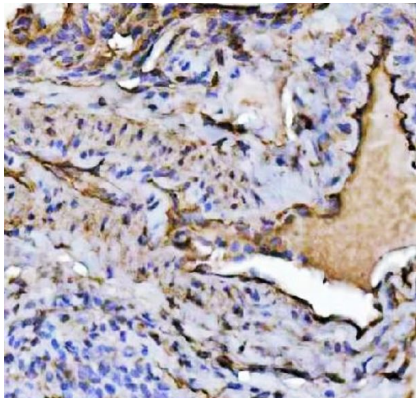
#### ARG45415 anti-PTRF antibody WB image

Western blot: HeLa stained with ARG45415 anti-PTRF antibody at 0.25 µg/ml dilution.



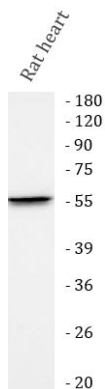
#### ARG45415 anti-PTRF antibody FACS image

Flow Cytometry: SiHa stained with ARG45415 anti-PTRF antibody at 1 µg/10<sup>6</sup> cells dilution.



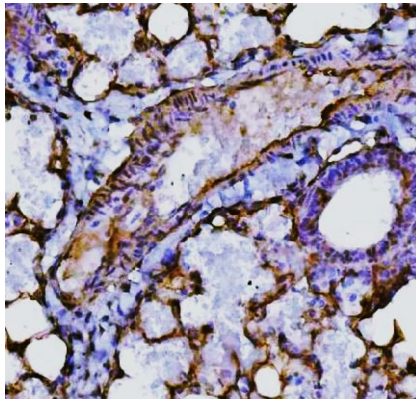
#### ARG45415 anti-PTRF antibody IHC-P image

Immunohistochemistry: Rat lung stained with ARG45415 anti-PTRF antibody at 2 µg/ml dilution.



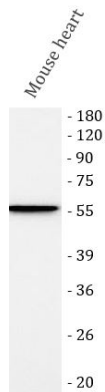
#### ARG45415 anti-PTRF antibody WB image

Western blot: Rat heart stained with ARG45415 anti-PTRF antibody at 0.25 µg/ml dilution.



ARG45415 anti-PTRF antibody IHC-P image

Immunohistochemistry: Mouse lung stained with ARG45415 anti-PTRF antibody at 2 µg/ml dilution.



ARG45415 anti-PTRF antibody WB image

Western blot: Mouse heart stained with ARG45415 anti-PTRF antibody at 0.25 µg/ml dilution.