

## ARG45400 anti-CD148 / DEP1 antibody

Package: 50 µg  
Store at: -20°C

### Summary

Product Description	Rabbit Polyclonal antibody recognizes CD148 / DEP1
Tested Reactivity	Hu, Rat
Tested Application	FACS, IHC-P, WB
Host	Rabbit
Clonality	Polyclonal
Isotype	IgG
Target Name	CD148 / DEP1
Species	Human
Immunogen	Recombinant protein containing to human CD148 / DEP1.
Conjugation	Un-conjugated
Alternate Names	R-PTP-J; Density-enhanced phosphatase 1; R-PTP-ETA; DEP-1; SCC1; DEP1; CD antigen CD148; Receptor-type tyrosine-protein phosphatase eta; Protein-tyrosine phosphatase eta; Protein-tyrosine phosphatase receptor type J; EC 3.1.3.48; HPTPeta; HPTP eta; R-PTP-eta; CD148

### Application Instructions

Application table	Application	Dilution
	FACS	1 - 3 µg/10 <sup>6</sup> cells
	IHC-P	2-5 µg/ml
	WB	0.25-0.5 µg/ml
Application Note	* The dilutions indicate recommended starting dilutions and the optimal dilutions or concentrations should be determined by the scientist.	
Observed Size	240 kDa	

### Properties

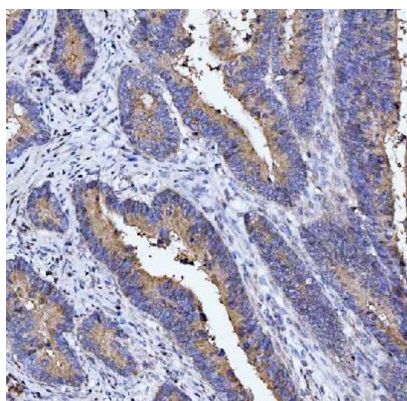
Form	Powder
Purification	Affinity purified
Buffer	0.2% Na <sub>2</sub> HPO <sub>4</sub> , 0.9% NaCl and 4% Trehalose.
Stabilizer	4% Trehalose
Concentration	0.5 mg/ml
Storage instruction	For continuous use, store undiluted antibody at 2-8°C for up to a week. For long-term storage, aliquot and store at -20°C or below. Storage in frost free freezers is not recommended. Avoid repeated freeze/thaw cycles. Suggest spin the vial prior to opening. The antibody solution should be gently mixed before use.

Note For laboratory research only, not for drug, diagnostic or other use.

## Bioinformation

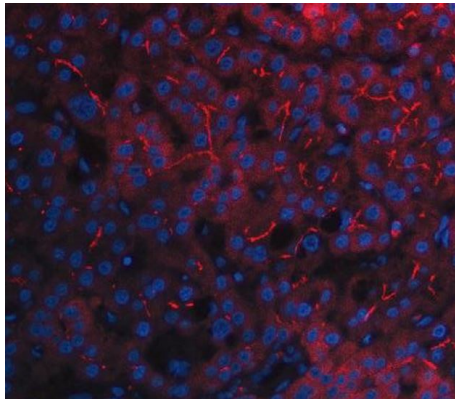
Gene Symbol	PTPRJ
Gene Full Name	protein tyrosine phosphatase, receptor type, J
Background	<p>The protein encoded by this gene is a member of the protein tyrosine phosphatase (PTP) family. PTPs are known to be signaling molecules that regulate a variety of cellular processes, including cell growth, differentiation, mitotic cycle, and oncogenic transformation. This PTP possesses an extracellular region containing five fibronectin type III repeats, a single transmembrane region, and a single intracytoplasmic catalytic domain, and thus represents a receptor-type PTP. This protein is present in all hematopoietic lineages, and was shown to negatively regulate T cell receptor signaling possibly through interfering with the phosphorylation of Phospholipase C Gamma 1 and Linker for Activation of T Cells. This protein can also dephosphorylate the PDGF beta receptor, and may be involved in UV-induced signal transduction. Multiple transcript variants encoding different isoforms have been found for this gene. [provided by RefSeq, Jul 2008]</p>
Function	<p>Tyrosine phosphatase which dephosphorylates or contributes to the dephosphorylation of CTNND1, FLT3, PDGFRB, MET, RET (variant MEN2A), KDR, LYN, SRC, MAPK1, MAPK3, EGFR, TJP1, OCLN, PIK3R1 and PIK3R2. Plays a role in cell adhesion, migration, proliferation and differentiation. Involved in vascular development. Regulator of macrophage adhesion and spreading. Positively affects cell-matrix adhesion. Positive regulator of platelet activation and thrombosis. Negative regulator of cell proliferation. Negative regulator of PDGF-stimulated cell migration; through dephosphorylation of PDGFR. Positive regulator of endothelial cell survival, as well as of VEGF-induced SRC and AKT activation; through KDR dephosphorylation. Negative regulator of EGFR signaling pathway; through EGFR dephosphorylation. Enhances the barrier function of epithelial junctions during reassembly. Negatively regulates T-cell receptor (TCR) signaling. Upon T-cell TCR activation, it is up-regulated and excluded from the immunological synapses, while upon T-cell-antigen presenting cells (APC) disengagement, it is no longer excluded and can dephosphorylate PLCG1 and LAT to down-regulate prolongation of signaling. [UniProt]</p>
Calculated Mw	146 kDa
PTM	N- and O-glycosylated. [UniProt]
Cellular Localization	Cell junction; Cell membrane; Cell projection; Membrane; Secreted. [UniProt]

## Images



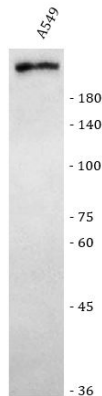
ARG45400 anti-CD148 / DEP1 antibody IHC-P image

Immunohistochemistry: Human rectal cancer stained with ARG45400 anti-CD148 / DEP1 antibody at 2 µg/ml dilution.



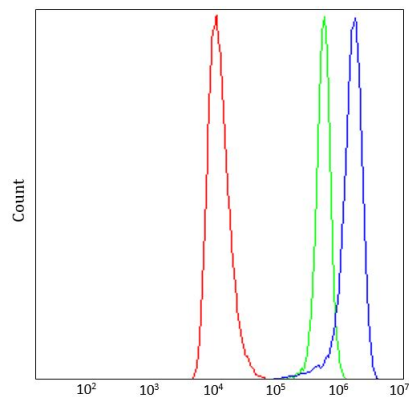
ARG45400 anti-CD148 / DEP1 antibody ICC/IF image

Immunofluorescence: Human liver cancer stained with ARG45400 anti-CD148 / DEP1 antibody at 5 µg/ml dilution.



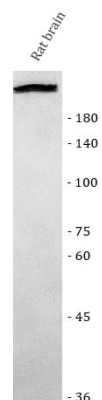
ARG45400 anti-CD148 / DEP1 antibody WB image

Western blot: A549 stained with ARG45400 anti-CD148 / DEP1 antibody at 0.5 µg/ml dilution.



ARG45400 anti-CD148 / DEP1 antibody FACS image

Flow Cytometry: HEL stained with ARG45400 anti-CD148 / DEP1 antibody at 1 µg/10<sup>6</sup> cells dilution.



ARG45400 anti-CD148 / DEP1 antibody WB image

Western blot: Rat brain stained with ARG45400 anti-CD148 / DEP1 antibody at 0.5 µg/ml dilution.