

ARG45395 anti-Gamma Tubulin antibody [GTU-88]

Package: 50 µg
Store at: -20°C

Summary

| | |
|---------------------|--|
| Product Description | Mouse Monoclonal antibody recognizes Gamma Tubulin |
| Tested Reactivity | Hu, Ms, Rat |
| Tested Application | ICC/IF, WB |
| Host | Mouse |
| Clonality | Monoclonal |
| Clone | GTU-88 |
| Isotype | IgG1 |
| Target Name | Gamma Tubulin |
| Immunogen | Synthetic gamma-tubulin peptide. |
| Conjugation | Un-conjugated |
| Alternate Names | gamma-1-tubulin; Gamma-tubulin complex component 1; GCP-1; TUBG; TUBGCP1; tubulin gamma-1 chain; tubulin; gamma 1; tubulin; gamma polypeptide TUBG1 CDCBM4; GCP-1; TUBG; TUBGCP1 |

Application Instructions

| | | |
|-------------------|--|----------------|
| Application table | Application | Dilution |
| | ICC/IF | 1 µg/ml |
| | WB | 0.25-0.5 µg/ml |
| Application Note | * The dilutions indicate recommended starting dilutions and the optimal dilutions or concentrations should be determined by the scientist. | |
| Observed Size | 55 kDa | |

Properties

| | |
|---------------------|--|
| Form | Powder |
| Purification | Ascites |
| Buffer | Mouse ascites fluid, 1.2% Sodium acetate, 0.01 mg Sodium azide and 2 mg BSA. |
| Preservative | 0.01 mg Sodium azide |
| Stabilizer | 2 mg BSA |
| Concentration | 0.1 mg/ml |
| Storage instruction | For continuous use, store undiluted antibody at 2-8°C for up to a week. For long-term storage, aliquot and store at -20°C or below. Storage in frost free freezers is not recommended. Avoid repeated freeze/thaw cycles. Suggest spin the vial prior to opening. The antibody solution should be gently mixed before use. |

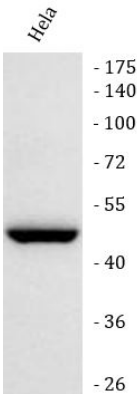
Note

For laboratory research only, not for drug, diagnostic or other use.

Bioinformation

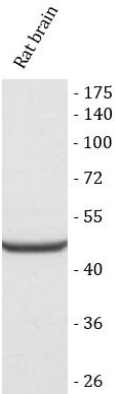
| | |
|-----------------------|--------------------------------------|
| Gene Symbol | TUBG1 |
| Gene Full Name | Tubulin gamma-1 chain |
| Calculated Mw | 55 kDa |
| PTM | Ubl conjugation. [UniProt] |
| Cellular Localization | Endosome; Golgi apparatus. [UniProt] |

Images



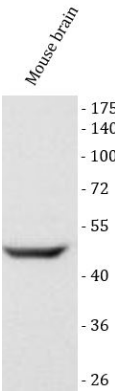
ARG45395 anti-Gamma Tubulin antibody [GTU-88] WB image

Western blot: HeLa stained with ARG45395 anti-Gamma Tubulin antibody [GTU-88] at 1 µg/ml dilution.



ARG45395 anti-Gamma Tubulin antibody [GTU-88] WB image

Western blot: Rat brain stained with ARG45395 anti-Gamma Tubulin antibody [GTU-88] at 1 µg/ml dilution.



ARG45395 anti-Gamma Tubulin antibody [GTU-88] WB image

Western blot: Mouse brain stained with ARG45395 anti-Gamma Tubulin antibody [GTU-88] at 1 µg/ml dilution.