

ARG45366 anti-KLK13 antibody [5X29]

Package: 50 µg
Store at: -20°C

Summary

Product Description	Mouse Monoclonal antibody [5X29] recognizes KLK13
Tested Reactivity	Hu
Tested Application	IHC-P
Host	Mouse
Clonality	Monoclonal
Clone	5X29
Isotype	IgG2
Target Name	KLK13
Species	Human
Immunogen	Recombinant Human KLK13.
Conjugation	Un-conjugated
Alternate Names	PCDGF, PC cell-derived growth factor, PEPI

Application Instructions

Application table	Application	Dilution
	IHC-P	Assay-dependent
Application Note	* The dilutions indicate recommended starting dilutions and the optimal dilutions or concentrations should be determined by the scientist.	

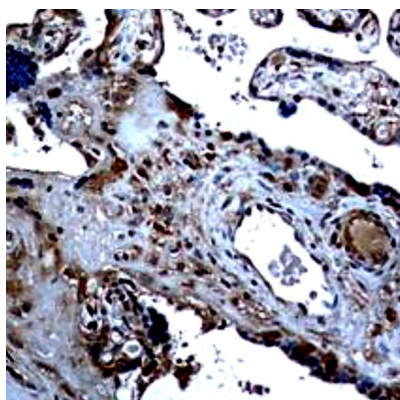
Properties

Form	Powder
Purification	Protein G chromatography
Buffer	PBS
Reconstitution	PBS
Concentration	0.2 mg/ml
Storage instruction	For continuous use, store undiluted antibody at 2-8°C for up to a week. For long-term storage, aliquot and store at -20°C or below. Storage in frost free freezers is not recommended. Avoid repeated freeze/thaw cycles. Suggest spin the vial prior to opening. The antibody solution should be gently mixed before use.
Note	For laboratory research only, not for drug, diagnostic or other use.

Bioinformation

Gene Symbol	KLK13
Gene Full Name	Kallikrein Related Peptidase 13
Background	Kallikreins are a subgroup of serine proteases having diverse physiological functions. Growing evidence suggests that many kallikreins are implicated in carcinogenesis and some have potential as novel cancer and other disease biomarkers. This gene is one of the fifteen kallikrein subfamily members located in a cluster on chromosome 19. Expression of this gene is regulated by steroid hormones and may be useful as a marker for breast cancer.
Calculated Mw	31 kDa
PTM	Disulfide bond, Glycoprotein. [UniProt]
Cellular Localization	Secreted. [UniProt]

Images



ARG45366 anti-KLK13 antibody [5X29] IHC-P image

Immunohistochemistry: Human placental stained with ARG45366 anti-KLK13 antibody [5X29].
