

## ARG45349 anti-Eph receptor A6 antibody [9J12]

Package: 50 µg  
Store at: -20°C

### Summary

Product Description	Rat Monoclonal antibody [9J12] recognizes Eph receptor A6
Tested Reactivity	Ms
Tested Application	IHC-P
Host	Rat
Clonality	Monoclonal
Clone	9J12
Isotype	IgG1
Target Name	Eph receptor A6
Species	Mouse
Immunogen	Recombinant Mouse Eph receptor A6.
Conjugation	Un-conjugated
Alternate Names	EPHA6; EPH Receptor A6; Ephrin Type-A Receptor 6; EPH Homology Kinase 2; EPH-Like Kinase 12; EC 2.7.10.1; FLJ35246; EHK-2; HEK12; EHK2; EK12; Ephrin Receptor EphA6; EC 2.7.10; PRO57066; EPA6

### Application Instructions

Application table	Application	Dilution
	IHC-P	1:50 - 1:200
Application Note	* The dilutions indicate recommended starting dilutions and the optimal dilutions or concentrations should be determined by the scientist.	

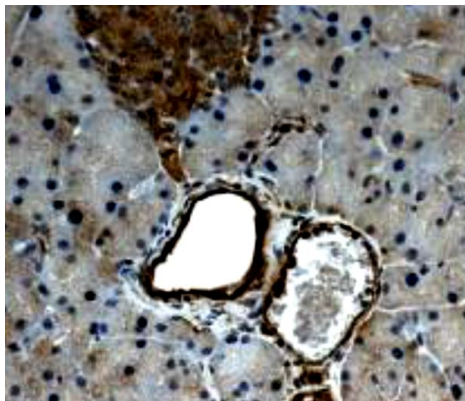
### Properties

Form	Powder
Purification	Protein G/A chromatography
Buffer	PBS
Reconstitution	PBS
Concentration	0.2 mg/ml
Storage instruction	For continuous use, store undiluted antibody at 2-8°C for up to a week. For long-term storage, aliquot and store at -20°C or below. Storage in frost free freezers is not recommended. Avoid repeated freeze/thaw cycles. Suggest spin the vial prior to opening. The antibody solution should be gently mixed before use.
Note	For laboratory research only, not for drug, diagnostic or other use.

Bioinformation

Gene Symbol	EPHA6
Gene Full Name	EPH Receptor A6
Background	Predicted to enable transmembrane-ephrin receptor activity. Predicted to be involved in axon guidance and ephrin receptor signaling pathway. Located in nucleoplasm. [provided by Alliance of Genome Resources, Nov 2024]
Calculated Mw	127 kDa
PTM	Glycoprotein; Phosphoprotein. [UniProt]
Cellular Localization	Membrane. [UniProt]

Images



ARG45349 anti-Eph receptor A6 antibody [9J12] IHC-P image

Immunohistochemistry: Mouse pancreas stained with ARG45349 anti-Eph receptor A6 antibody [9J12].