

ARG45337 anti-CCL21 / Exodus 2 antibody [10K10]

Package: 50 µg
Store at: -20°C

Summary

Product Description	Rat Monoclonal antibody [10K10] recognizes CCL21 / Exodus 2
Tested Reactivity	Ms
Tested Application	IHC-P
Host	Rat
Clonality	Monoclonal
Clone	10K10
Isotype	IgG2
Target Name	CCL21 / Exodus 2
Species	Mouse
Immunogen	Recombinant Mouse CCL21 / Exodus 2.
Conjugation	Un-conjugated
Alternate Names	CCL21; C-C Motif Chemokine Ligand 21; 6Ckine; SLC; SCYA21; TCA4; CKb9; ECL; Small Inducible Cytokine Subfamily A (Cys-Cys), Member 21; Efficient Chemoattractant For Lymphocytes; Secondary Lymphoid Tissue Chemokine; Chemokine (C-C Motif) Ligand 21; Beta Chemokine Exodus-2; C-C Motif Chemokine 21; Exodus-2; Secondary Lymphoid-Tissue Chemokine; Small-Inducible Cytokine A21; Beta-Chemokine Exodus-2

Application Instructions

Application table	Application	Dilution
	IHC-P	1:100 - 1:200
Application Note	* The dilutions indicate recommended starting dilutions and the optimal dilutions or concentrations should be determined by the scientist.	

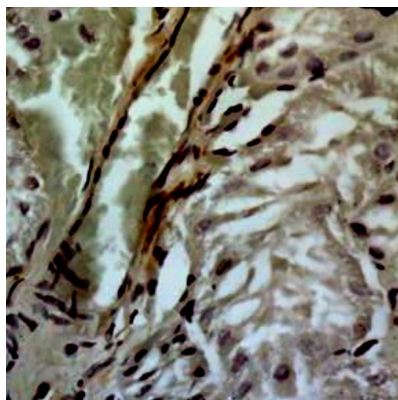
Properties

Form	Powder
Purification	Protein G/A chromatography
Buffer	PBS
Reconstitution	PBS
Concentration	0.2 mg/ml
Storage instruction	For continuous use, store undiluted antibody at 2-8°C for up to a week. For long-term storage, aliquot and store at -20°C or below. Storage in frost free freezers is not recommended. Avoid repeated freeze/thaw cycles. Suggest spin the vial prior to opening. The antibody solution should be gently mixed before use.
Note	For laboratory research only, not for drug, diagnostic or other use.

Bioinformation

Gene Symbol	CCL21
Gene Full Name	C-C Motif Chemokine Ligand 21
Background	<p>This antimicrobial gene is one of several CC cytokine genes clustered on the p-arm of chromosome 9. Cytokines are a family of secreted proteins involved in immunoregulatory and inflammatory processes. The CC cytokines are proteins characterized by two adjacent cysteines. Similar to other chemokines the protein encoded by this gene inhibits hemopoiesis and stimulates chemotaxis. This protein is chemotactic in vitro for thymocytes and activated T cells, but not for B cells, macrophages, or neutrophils. The cytokine encoded by this gene may also play a role in mediating homing of lymphocytes to secondary lymphoid organs. It is a high affinity functional ligand for chemokine receptor 7 that is expressed on T and B lymphocytes and a known receptor for another member of the cytokine family (small inducible cytokine A19). [provided by RefSeq, Sep 2014]</p>
Function	<p>Inhibits hemopoiesis and stimulates chemotaxis. Chemotactic in vitro for thymocytes and activated T-cells, but not for B-cells, macrophages, or neutrophils. Potent mesangial cell chemoattractant. Shows preferential activity towards naive T-cells. May play a role in mediating homing of lymphocytes to secondary lymphoid organs. [UniProt]</p>
Calculated Mw	15 kDa
PTM	Disulfide bond. [UniProt]
Cellular Localization	Secreted. [UniProt]

Images



ARG45337 anti-CCL21 / Exodus 2 antibody [10K10] IHC-P image

Immunohistochemistry: Mouse kidney stained with ARG45337 anti-CCL21 / Exodus 2 antibody [10K10].