

## ARG45330 anti-Inhibin beta B antibody [9M29]

Package: 50 µg  
Store at: -20°C

### Summary

Product Description	Mouse Monoclonal antibody [9M29] recognizes Inhibin beta B
Tested Reactivity	Hu
Tested Application	IHC-P
Host	Mouse
Clonality	Monoclonal
Clone	9M29
Isotype	IgG1
Target Name	Inhibin beta B
Species	Human
Immunogen	Recombinant Human Inhibin beta B.
Conjugation	Un-conjugated
Alternate Names	INHBB; Inhibin Subunit Beta B; Inhibin Beta B Chain; Activin Beta-B Chain; Inhibin, Beta B (Activin AB Beta Polypeptide); Activin AB Beta Polypeptide; Inhibin Beta B Subunit; Inhibin, Beta B; Inhibin, Beta-2

### Application Instructions

Application table	Application	Dilution
	IHC-P	Assay-dependent
Application Note	* The dilutions indicate recommended starting dilutions and the optimal dilutions or concentrations should be determined by the scientist.	

### Properties

Form	Powder
Purification	Protein G chromatography
Buffer	PBS
Reconstitution	PBS
Concentration	0.2 mg/ml
Storage instruction	For continuous use, store undiluted antibody at 2-8°C for up to a week. For long-term storage, aliquot and store at -20°C or below. Storage in frost free freezers is not recommended. Avoid repeated freeze/thaw cycles. Suggest spin the vial prior to opening. The antibody solution should be gently mixed before use.
Note	For laboratory research only, not for drug, diagnostic or other use.

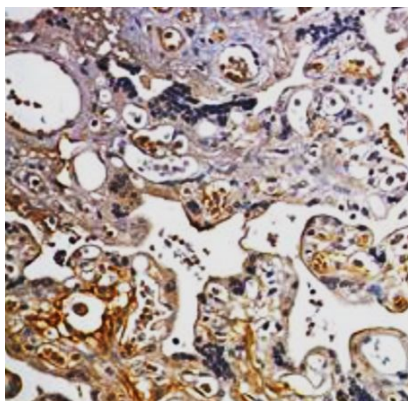
## Bioinformation

---

Gene Symbol	INHBB
Gene Full Name	Inhibin Subunit Beta B
Background	This gene encodes a member of the TGF-beta (transforming growth factor-beta) superfamily of proteins. The encoded preproprotein is proteolytically processed to generate a subunit of the dimeric activin and inhibin protein complexes. These complexes activate and inhibit, respectively, follicle stimulating hormone secretion from the pituitary gland. Polymorphisms near this gene are associated with pre-eclampsia in female human patients. [provided by RefSeq, Aug 2016]
Function	Inhibins and activins inhibit and activate, respectively, the secretion of follitropin by the pituitary gland. Inhibins/activins are involved in regulating a number of diverse functions such as hypothalamic and pituitary hormone secretion, gonadal hormone secretion, germ cell development and maturation, erythroid differentiation, insulin secretion, nerve cell survival, embryonic axial development or bone growth, depending on their subunit composition. Inhibins appear to oppose the functions of activins. [UniProt]
Calculated Mw	45 kDa
PTM	Cleavage on pair of basic residues; Disulfide bond; Glycoprotein. [UniProt]
Cellular Localization	Secreted. [UniProt]

## Images

---



ARG45330 anti-Inhibin beta B antibody [9M29] IHC-P image

Immunohistochemistry: Human placental stained with ARG45330 anti-Inhibin beta B antibody [9M29].