

ARG45309 anti-RPS25 antibody

Package: 50 µg
Store at: -20°C

Summary

Product Description	Polyclonal antibody recognizes RPS25
Tested Reactivity	Hu, Ms, Rat
Tested Application	FACS, IHC-P, WB
Host	Rabbit
Clonality	Polyclonal
Isotype	Rabbit IgG
Target Name	RPS25
Species	Human
Immunogen	Recombinant protein containing to human RPS25.
Conjugation	Un-conjugated
Alternate Names	RPS25; Ribosomal Protein S25; ES25; S25; Small Ribosomal Subunit Protein ES25; 40S Ribosomal Protein S25

Application Instructions

Application table	Application	Dilution
	FACS	1 - 3 µg/10 ⁶ cells
	IHC-P	2-5 µg/ml
	WB	0.1-0.25 µg/ml
Application Note	* The dilutions indicate recommended starting dilutions and the optimal dilutions or concentrations should be determined by the scientist.	
Observed Size	17 kDa	

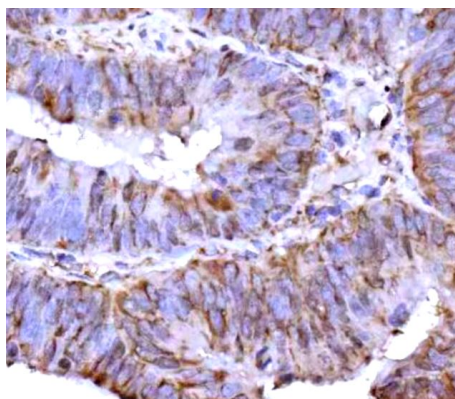
Properties

Form	Liquid
Purification	Affinity purification with immunogen.
Buffer	0.2% Na ₂ HPO ₄ , 0.9% NaCl and 4% Trehalose.
Stabilizer	4% Trehalose
Concentration	0.5 mg/ml
Storage instruction	For continuous use, store undiluted antibody at 2-8°C for up to a week. For long-term storage, aliquot and store at -20°C or below. Storage in frost free freezers is not recommended. Avoid repeated freeze/thaw cycles. Suggest spin the vial prior to opening. The antibody solution should be gently mixed before use.

Bioinformation

Gene Symbol	RPS25
Gene Full Name	Ribosomal Protein S25
Background	Ribosomes, the organelles that catalyze protein synthesis, consist of a small 40S subunit and a large 60S subunit. Together these subunits are composed of 4 RNA species and approximately 80 structurally distinct proteins. This gene encodes a ribosomal protein that is a component of the 40S subunit. The protein belongs to the S25E family of ribosomal proteins. It is located in the cytoplasm. As is typical for genes encoding ribosomal proteins, there are multiple processed pseudogenes of this gene dispersed through the genome. [provided by RefSeq, Jul 2008]
Function	The ribosome is a large ribonucleoprotein complex responsible for the synthesis of proteins in the cell. [UniProt]
Calculated Mw	14 kDa
PTM	Acetylation. [UniProt]
Cellular Localization	Cytoplasm. [UniProt]

Images



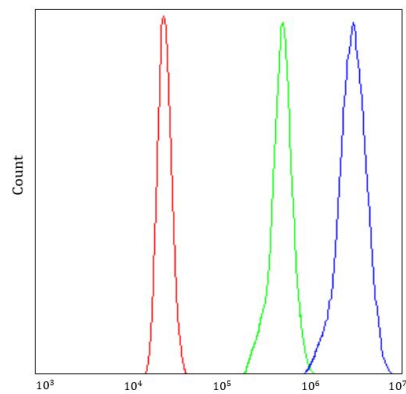
ARG45309 anti-RPS25 antibody IHC-P image

Immunohistochemistry: Human colon adenocarcinoma stained with ARG45309 anti-RPS25 antibody at 2 µg/ml dilution.



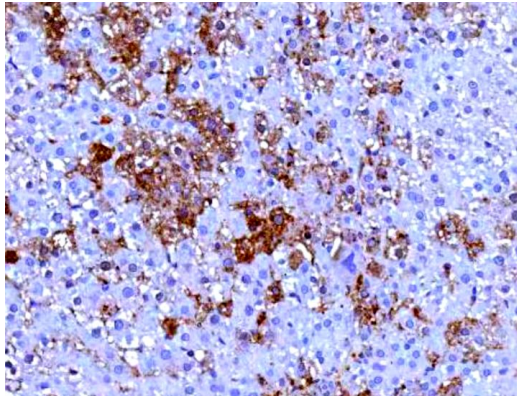
ARG45309 anti-RPS25 antibody WB image

Western blot: A549 and HeLa stained with ARG45309 anti-RPS25 antibody at 0.5 µg/ml dilution.



ARG45309 anti-RPS25 antibody FACS image

Flow Cytometry: HL-60 stained with ARG45309 anti-RPS25 antibody at $1\text{ }\mu\text{g}/10^6$ cells dilution.



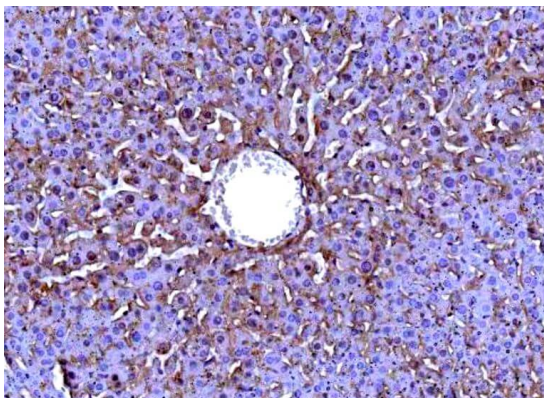
ARG45309 anti-RPS25 antibody IHC-P image

Immunohistochemistry: Rat liver stained with ARG45309 anti-RPS25 antibody at $2\text{ }\mu\text{g}/\text{ml}$ dilution.



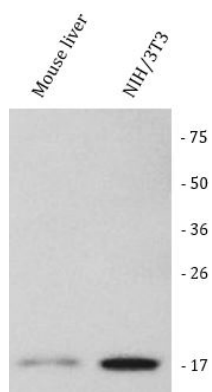
ARG45309 anti-RPS25 antibody WB image

Western blot: Rat liver and RH35 stained with ARG45309 anti-RPS25 antibody at $0.5\text{ }\mu\text{g}/\text{ml}$ dilution.



ARG45309 anti-RPS25 antibody IHC-P image

Immunohistochemistry: Mouse liver stained with ARG45309 anti-RPS25 antibody at $2\text{ }\mu\text{g}/\text{ml}$ dilution.



ARG45309 anti-RPS25 antibody WB image

Western blot: Mouse liver and NIH/3T3 stained with ARG45309 anti-RPS25 antibody at 0.5 $\mu\text{g/ml}$ dilution.