

## ARG45308 anti-RPS17 antibody

Package: 50 µg  
Store at: -20°C

### Summary

Product Description	Polyclonal antibody recognizes RPS17
Tested Reactivity	Hu, Ms, Rat
Tested Application	FACS, ICC/IF, WB
Host	Rabbit
Clonality	Polyclonal
Isotype	Rabbit IgG
Target Name	RPS17
Species	Human
Immunogen	Recombinant protein containing to human RPS17.
Conjugation	Un-conjugated
Alternate Names	RPS17; Ribosomal Protein S17; RPS17L1; RPS17L2; RPS17L; ES17; S17; Small Ribosomal Subunit Protein ES17; 40S Ribosomal Protein S17; MGC72007; Ribosomal Protein S17-Like; DBA4

### Application Instructions

Application table	Application	Dilution
	FACS	1 - 3 µg/10 <sup>6</sup> cells
	ICC/IF	5 µg/ml
	WB	0.25-0.5 µg/ml
Application Note	* The dilutions indicate recommended starting dilutions and the optimal dilutions or concentrations should be determined by the scientist.	
Observed Size	18 kDa	

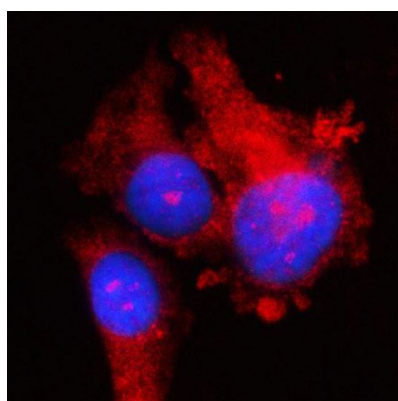
### Properties

Form	Liquid
Purification	Affinity purification with immunogen.
Buffer	0.2% Na <sub>2</sub> HPO <sub>4</sub> , 0.9% NaCl and 4% Trehalose.
Stabilizer	4% Trehalose
Concentration	0.5 mg/ml
Storage instruction	For continuous use, store undiluted antibody at 2-8°C for up to a week. For long-term storage, aliquot and store at -20°C or below. Storage in frost free freezers is not recommended. Avoid repeated freeze/thaw cycles. Suggest spin the vial prior to opening. The antibody solution should be gently mixed before use.

## Bioinformation

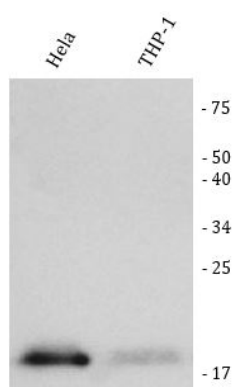
Gene Symbol	RPS17
Gene Full Name	Ribosomal Protein S17
Background	Ribosomes, the organelles that catalyze protein synthesis, consist of a small 40S subunit and a large 60S subunit. Together these subunits are composed of four RNA species and approximately 80 structurally distinct proteins. This gene encodes a ribosomal protein that is a component of the 40S subunit. The protein belongs to the S17E family of ribosomal proteins and is located in the cytoplasm. Mutations in this gene cause Diamond-Blackfan anemia 4. Alternative splicing of this gene results in multiple transcript variants. As is typical for genes encoding ribosomal proteins, there are multiple processed pseudogenes of this gene dispersed through the genome. [provided by RefSeq, Apr 2014]
Function	The ribosome is a large ribonucleoprotein complex responsible for the synthesis of proteins in the cel. [UniProt]
Calculated Mw	16 kDa
PTM	Isopeptide bond; Phosphoprotein; Ubl conjugation. [UniProt]
Cellular Localization	Cytoplasm; Nucleus. [UniProt]

## Images



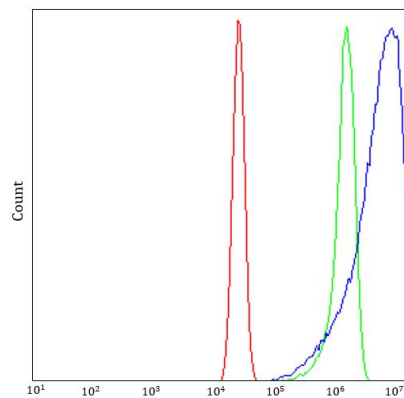
ARG45308 anti-RPS17 antibody ICC/IF image

Immunofluorescence: PC3 stained with ARG45308 anti-RPS17 antibody at 5 ug/ml dilution.



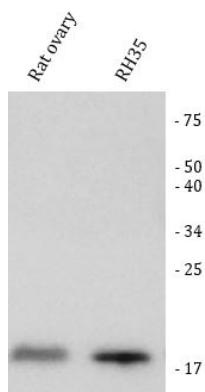
ARG45308 anti-RPS17 antibody WB image

Western blot: HeLa and THP-1 stained with ARG45308 anti-RPS17 antibody at 0.5 µg/ml dilution.



ARG45308 anti-RPS17 antibody FACS image

Flow Cytometry: A431 stained with ARG45308 anti-RPS17 antibody at 1  $\mu\text{g}/10^6$  cells dilution.



ARG45308 anti-RPS17 antibody WB image

Western blot: Rat ovary and RH35 stained with ARG45308 anti-RPS17 antibody at 0.5  $\mu\text{g}/\text{ml}$  dilution.



ARG45308 anti-RPS17 antibody WB image

Western blot: NIH/3T3 stained with ARG45308 anti-RPS17 antibody at 0.5  $\mu\text{g}/\text{ml}$  dilution.