

ARG45288 anti-SUCLG2 antibody

Package: 50 µg
Store at: -20°C

Summary

Product Description	Polyclonal antibody recognizes SUCLG2
Tested Reactivity	Hu, Ms, Rat
Tested Application	FACS, ICC/IF, IHC-P, WB
Host	Rabbit
Clonality	Polyclonal
Isotype	Rabbit IgG
Target Name	SUCLG2
Species	Human
Immunogen	Recombinant protein containing to human SUCLG2.
Conjugation	Un-conjugated
Alternate Names	SUCLG2; Succinate-CoA Ligase GDP-Forming Subunit Beta; Succinate--CoA Ligase [GDP-Forming] Subunit Beta, Mitochondrial; GTP-Specific Succinyl-CoA Synthetase Subunit Beta; EC 6.2.1.4 47; SCS-BetaG; GTPSCS; G-SCS; Succinyl-CoA Ligase [GDP-Forming] Subunit Beta, Mitochondrial; Succinyl-CoA Ligase, GDP-Forming, Beta Chain, Mitochondrial; GTP-Specific Succinyl-CoA Synthetase Beta Subunit; Succinate-CoA Ligase GDP-Forming Beta Subunit; Succinyl-CoA Synthetase, Beta-G Chain; Succinyl-CoA Synthetase Beta-G Chain; EC 6.2.1.47; GBETA

Application Instructions

Application table	Application	Dilution
	FACS	1 - 3 µg/10 ⁶ cells
	ICC/IF	5 µg/ml
	IHC-P	2-5 µg/ml
	WB	0.25-0.5 µg/ml
Application Note	* The dilutions indicate recommended starting dilutions and the optimal dilutions or concentrations should be determined by the scientist.	
Observed Size	47 kDa	

Properties

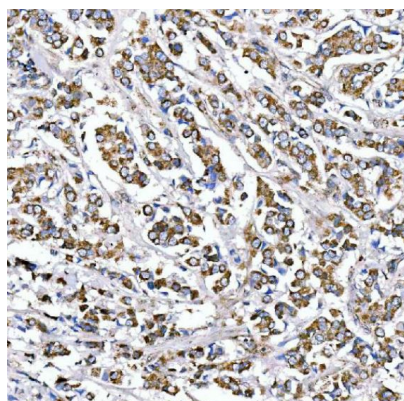
Form	Liquid
Purification	Affinity purification with immunogen.
Buffer	0.2% Na ₂ HPO ₄ , 0.9% NaCl and 4% Trehalose.
Stabilizer	4% Trehalose
Concentration	0.5 mg/ml

Storage instruction	For continuous use, store undiluted antibody at 2-8°C for up to a week. For long-term storage, aliquot and store at -20°C or below. Storage in frost free freezers is not recommended. Avoid repeated freeze/thaw cycles. Suggest spin the vial prior to opening. The antibody solution should be gently mixed before use.
Note	For laboratory research only, not for drug, diagnostic or other use.

Bioinformation

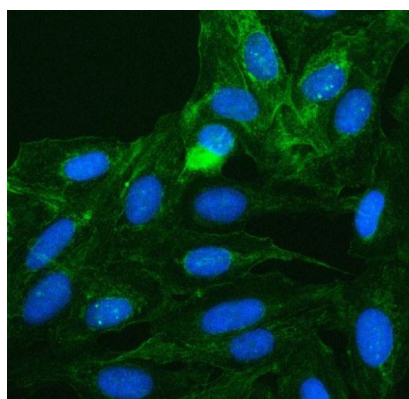
Gene Symbol	SUCLG2
Gene Full Name	Succinate-CoA Ligase GDP-Forming Subunit Beta
Background	This gene encodes a GTP-specific beta subunit of succinyl-CoA synthetase. Succinyl-CoA synthetase catalyzes the reversible reaction involving the formation of succinyl-CoA and succinate. Alternate splicing results in multiple transcript variants. Pseudogenes of this gene are found on chromosomes 5 and 12. [provided by RefSeq, Apr 2010]
Function	GTP-specific succinyl-CoA synthetase functions in the citric acid cycle (TCA), coupling the hydrolysis of succinyl-CoA to the synthesis of GTP and thus represents the only step of substrate-level phosphorylation in the TCA. The beta subunit provides nucleotide specificity of the enzyme and binds the substrate succinate, while the binding sites for coenzyme A and phosphate are found in the alpha subunit.. [UniProt]
Calculated Mw	47 kDa
PTM	Acetylation; Phosphoprotein. [UniProt]
Cellular Localization	Mitochondrion. [UniProt]

Images



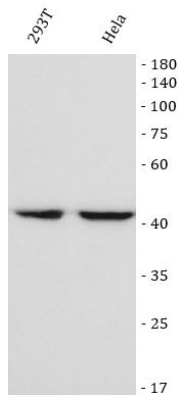
ARG45288 anti-SUCLG2 antibody IHC-P image

Immunohistochemistry: Human breast cancer stained with ARG45288 anti-SUCLG2 antibody at 2 µg/ml dilution.



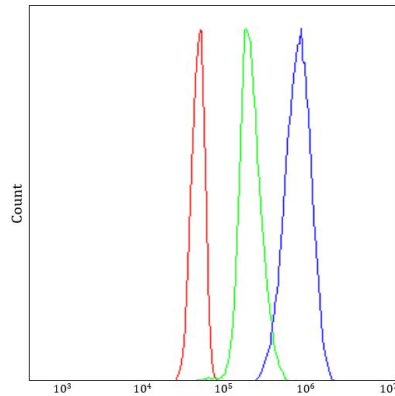
ARG45288 anti-SUCLG2 antibody ICC/IF image

Immunofluorescence: U2OS stained with ARG45288 anti-SUCLG2 antibody at 5 µg/ml dilution.



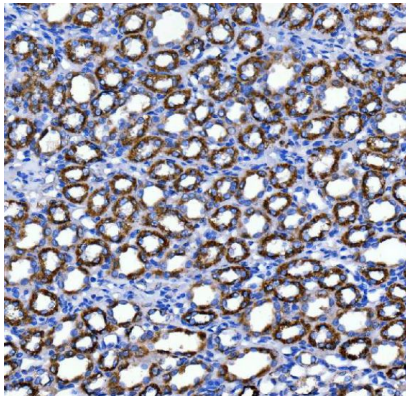
ARG45288 anti-SUCLG2 antibody WB image

Western blot: 293T and HeLa stained with ARG45288 anti-SUCLG2 antibody at 0.5 µg/ml dilution.



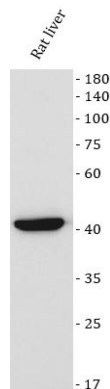
ARG45288 anti-SUCLG2 antibody FACS image

Flow Cytometry: Jurkat stained with ARG45288 anti-SUCLG2 antibody at 1 µg/10⁶ cells dilution.



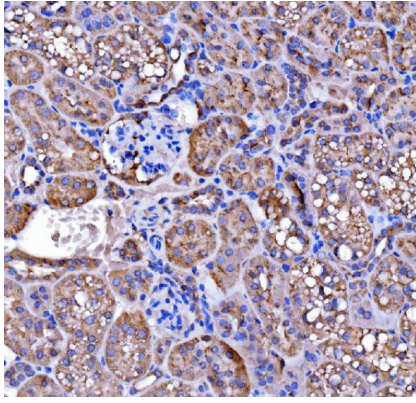
ARG45288 anti-SUCLG2 antibody IHC-P image

Immunohistochemistry: Rat kidney stained with ARG45288 anti-SUCLG2 antibody at 2 µg/ml dilution.



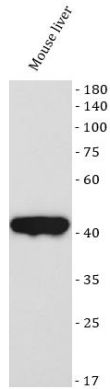
ARG45288 anti-SUCLG2 antibody WB image

Western blot: Rat liver stained with ARG45288 anti-SUCLG2 antibody at 0.5 µg/ml dilution.



ARG45288 anti-SUCLG2 antibody IHC-P image

Immunohistochemistry: Mouse kidney stained with ARG45288 anti-SUCLG2 antibody at 2 µg/ml dilution.



ARG45288 anti-SUCLG2 antibody WB image

Western blot: Mouse liver stained with ARG45288 anti-SUCLG2 antibody at 0.5 µg/ml dilution.